

FALL COMMENCEMENT  
SATURDAY, DECEMBER THIRTEENTH



WASHINGTON STATE  
UNIVERSITY

FOR  
THE

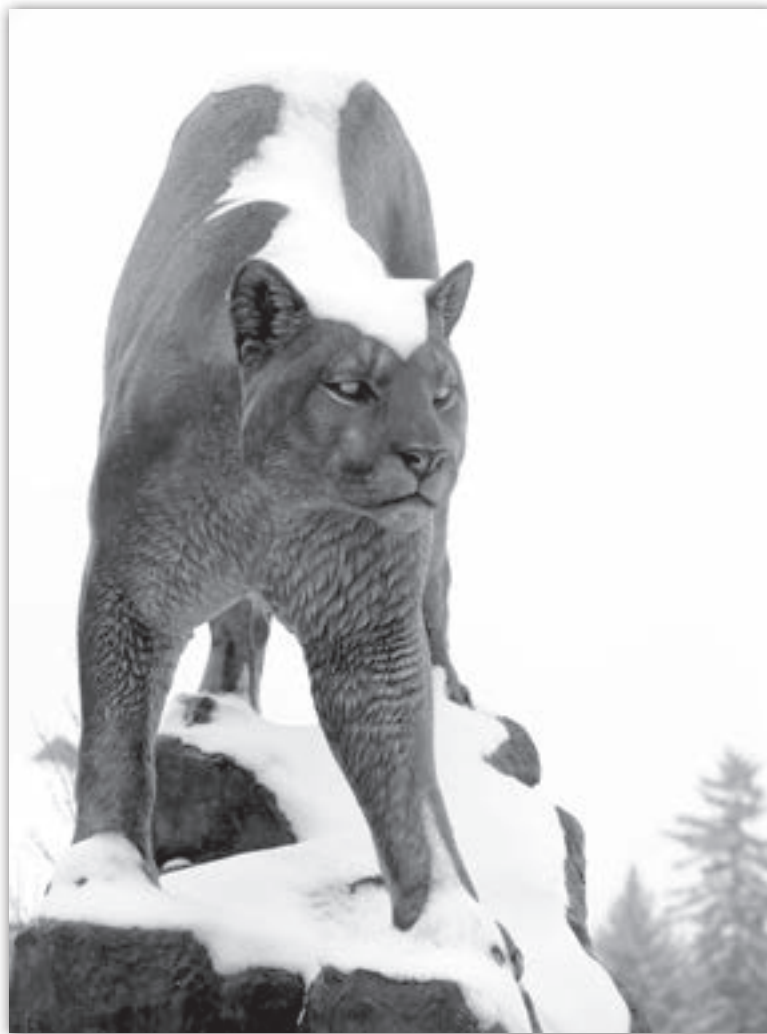
# FOURTEENTH ANNUAL FALL COMMENCEMENT

SATURDAY, DECEMBER 13, 2014

BEASLEY COLISEUM

WASHINGTON STATE UNIVERSITY

PULLMAN, WASHINGTON



## *Commencement Mission Statement*

Commencement at Washington State University represents the culmination of a student's academic achievement. It is a time for celebration and reflection for students, families, faculty, and staff. It brings together the campus community to share the joy of the accomplished goals of our students.

The commencement ceremony at Washington State University serves a dual purpose: to mark a point of achievement, thus completing a chapter in the lives of students and those who support them, and to encourage continued pursuit of learning, personal fulfillment, and engagement with their local and worldwide communities.

# Contents



Best Wishes from the President . . . . .4

President’s Ceremonial Stole and Chain of Office . . . . .5

Best Wishes from the Faculty Senate and Administrative Professional Advisory Council Chairs. . . . .6

Best Wishes from the ASWSU, ASWSU-Global, and GPSA Presidents . . . . .7

Order of Exercises  
     10:00 a.m. All Colleges. . . . . 8

Board of Regents, Executive Officers, Academic Deans, and Campus Chancellors. . . . .9

Commencement Officials and Staff . . . . .11

Commencement 2014 . . . . .12

The University Mace . . . . .13

Washington State University Highlights, 2011–2014 . . . . .14

Academic Regalia . . . . .16

Commencement Speaker and Honorary Degree Recipient . . . . .17

Candidates for Advanced Degrees . . . . .18

Candidates for Graduate Certificates . . . . .34

Candidates for Professional Degrees. . . . .35

Candidates for Baccalaureate Degrees . . . . .36

Candidates for Residency Teaching Certificates . . . . .54

Commissions. . . . .55

Honors College and Graduation with Academic Honors. . . . .55

Student Lineup and Seating Map . . . . .56



**Elson S. Floyd, Ph.D.**  
*President,*  
*Washington State University*

Elson S. Floyd became the tenth president of Washington State University on May 21, 2007. He previously was president of the four-campus University of Missouri from 2003 to 2007, and he served as president of Western Michigan University from 1998 to 2003.

He began his career in 1978 at the University of North Carolina at Chapel Hill, where he held deanships in the Division of Student Affairs, the General College, and the College of Arts and Sciences. From 1988 to 1990, he was assistant vice president for student services for the UNC system office, where he helped develop student affairs and academic affairs policy for the 16-campus system.

From 1990 to 1993, Dr. Floyd filled vice presidencies at Eastern Washington University and then was executive director of the Washington Higher Education Coordinating Board. From 1995 to 1998, he was executive vice chancellor of UNC at Chapel Hill.

A native of Henderson, North Carolina, Dr. Floyd holds a bachelor of arts degree in political science and speech, a master of education degree in adult education, and a doctor of philosophy degree in higher and adult education, all from the University of North Carolina at Chapel Hill. Among his other honors is the 2004 Distinguished Alumnus Award from the University of North Carolina at Chapel Hill.

**T**oday represents an impressive milestone in your life and in your academic career. I would like to extend my heartiest congratulations to you on your attainment of this goal.

At Washington State University, we strongly believe that we provide the tools necessary to help our students succeed. However, we also recognize that each student ultimately determines his or her own path. It is your hard work, determination, and persistence that have brought you to this day. You, your family, and your friends should be immensely proud of this achievement.

In the years ahead, I know you will often reflect upon what you have experienced here at WSU. Graduation opens the door for you to put to use what you have learned in your classes, laboratories, internships, and campus life. You now have the opportunity to make a difference in the world. Take advantage of it.

Again, congratulations. I wish you every success and trust that you will remain connected to WSU, your alma mater. You will always be a member of the loyal Cougar family.

It is an honor to preside at your commencement. I look forward to shaking your hand and wishing you well after you receive your diploma cover.

A handwritten signature in black ink, appearing to read "Elson S. Floyd". The signature is fluid and cursive.

Elson S. Floyd, Ph.D.

President, Washington State University



## President's Ceremonial Stole

Presented to President Elson S. Floyd during his first commencement ceremony at Washington State University in fall 2007, the ceremonial stole signifies the ethnic diversity the University seeks in all its endeavors and displays a dynamic visual presentation. Researched and designed by faculty member Linda Arthur Bradley with contributions from apparel, merchandising, design, and textiles students, the stole is made of textiles from locations including Ecuador, India, Scotland, and Japan. Many came from personal collections of Bradley or her colleagues, some were available commercially, and four were hand-woven by fiber artists specifically for the stole.



Master Salish weaver Susan Pavel hand-spun and wove two pieces of traditional Indian design. Other custom pieces include a Hawaiian hand appliqué by Charlotte Hughes, an American coverlet sampler by Cynthia Hosek, and embroidered pieces representing the Nez Perce tradition by Ann MacCormack.

## President's Chain of Office

During commencement ceremonies and other special occasions, the president of Washington State University wears the President's Chain of Office. The medallion features the WSU shield with Cougar head, and the links are engraved with the names and dates of service for each past WSU president, starting with George Lilley, who served from 1891 to 1892, and ending with V. Lane Rawlins, who served from 2000 to 2007. Blank links allow engraving of names and service years for future presidents.

The Chain of Office was created at the request of V. Lane Rawlins, who became president of WSU on June 8, 2000. He wore it for the first time during his inauguration on March 28, 2001.





**Craig Parks**  
*Chair, Faculty Senate*

**I'm thrilled to congratulate all of you on earning your degrees.**

The 2012 census showed that only about 30 percent of all Americans have a bachelor's degree, 11 percent have a master's degree, and 2 percent have a professional or doctoral degree. What you've done puts you into an elite group. I've had the good fortune to have a number of you in class, and I always enjoy seeing familiar faces step up to receive a diploma.

I'm especially excited that so many of you are first-generation college students. I am one as well, so I understand the challenges one faces in going to college without family members who can help prepare you for the experience. I was able to succeed in part because, like you, I went to land-grant schools (Michigan State undergrad, Illinois graduate) that understood my needs as a first-gen student; like you, I had high school teachers, professors, and family friends that pointed me in the right direction; and most of all like you, I had family members who wanted the best for me. I repay them by doing for others what they did for me. Now you have a responsibility to do the same. Be there for the young people coming after you who need guidance. And as soon as you can, go thank all of the people, in person, who put you on this path.

Come say hi to me after the ceremony.

Craig Parks  
Chair, Faculty Senate  
December 2014



**Karen L. Garrett**  
*Chair, Administrative Professional Advisory Council*

**Graduates,**

Commencement day is finally here, a day I am sure most of you have anxiously awaited! On behalf of the administrative professional staff at Washington State University I would like to commend you on this significant accomplishment. We applaud each and every one of you!

For some of you, graduation marks the end of your academic career, for others it is a stepping stone to bigger and better things. Whatever your future holds, please know we were happy to serve you and wish you the best in your future endeavors.

Welcome to the ranks of the Cougar Alumni, and Go Cougs!

Karen L. Garrett  
Chair, Administrative Professional Advisory Council  
December 2014



**Jared Powell**  
*President, Associated Students  
of Washington State University*



**John Larson**  
*President, Associated Students  
of Washington State University-  
Global*



**Nathan Neale**  
*President, Graduate and  
Professional Student Association*

**To the Graduates of the Class of 2014,**

On behalf of your student governments, the Associated Students of Washington State University, the Associated Students of Washington State University Global Campus, and the Graduate and Professional Student Association, we offer each and every one of you our sincere congratulations on graduating today from Washington State University. It is an honor to recognize the sum of your efforts as a student here at this esteemed institution.

You deserve praise for your efforts over these last several years and we celebrate these achievements today. You have worked diligently in reaching this milestone—but remember to acknowledge those individuals who have contributed to your success. Today you earn a valuable tool, a degree from one of the finest universities in our nation, and now it is your responsibility to use that tool to shape the rest of your lives. A degree from Washington State University is something to be extremely proud of and we have every confidence that you are prepared to encounter any joys and challenges that may come your way. The experiences you have gone through as a Cougar are what make each one of you world class. As you move on from Washington State University do not turn your back, but rather remember that WSU will always be here for you and will always be a place that you can call home. We encourage you all to stay engaged with the Cougar community for the rest of your lives.

It has been an unbelievable honor serving all of you this year and we wish you the best of luck in your future. Once again, congratulations on earning your degree and we at ASWSU, ASWSUG, and GPSA wish you all the best with your new beginnings. As always, Go Cougs!

Jared Kersey Powell  
ASWSU President

John Larson  
ASWSU Global President

Nathan Neale  
GPSA President



10:00 a.m.

All Colleges

**PROCESSIONAL**

Washington State University Brass Quintet  
Chris Wurst, Instructor, *School of Music*, conducting  
Mace Bearer and Honor Guards  
*Faculty Senate Chair, and ASWSU and GPSA Presidents*  
Vice Provosts and Designated Faculty  
Hooding Faculty  
Candidates for Advanced and Professional Degrees  
Candidates for Baccalaureate Degrees and Faculty  
Gonfalons  
President's Platform Party  
*Regents of the University, Honored Guests,  
College Deans, Vice Presidents, Provost, President*

**POSTING OF COLORS**

Joint WSU/UI ROTC Color Guard

**THE NATIONAL ANTHEM**

Julie Anne Wieck, Associate Professor  
*School of Music*

**ALMA MATER**

Led by Samantha Cottam, Senior  
Vocal Performance Major, *School of Music*

**GREETINGS AND INTRODUCTIONS**

Elson S. Floyd, President  
Daniel Bernardo, Provost and Executive Vice President

**WELCOME**

Nathan Neale, President  
*Graduate and Professional Students Association*  
Jared Powell, President  
*Associated Students of WSU*  
John Larson, President  
*Associated Students of WSU Global*  
Sally Van Boheemen, President  
*Alumni Association*

**SENIOR GIFT PRESENTATION**

Ulises Herrera  
*Annual Giving, WSU Foundation*

**STUDENT RECOGNITIONS**

Provost Bernardo

**COMMENCEMENT ADDRESS**

Jordan Schnitzer  
*President, Harsch Investment Properties*

**COMMISSIONING OF ROTC  
OFFICER CANDIDATES**

Mike McClintock, Captain  
*U.S. Navy, Professor of Naval Sciences*

**ADVANCED AND PROFESSIONAL DEGREES**

**BACCALAUREATE DEGREES**

**RECESSIONAL**

Washington State University Brass Quintet

## Board of Regents

Jay Inslee  
*Governor of the State of Washington*  
*Advisory Member Ex Officio*

Michael Worthy  
*Chair of the Board*

Ryan Durkan  
*Vice Chair of the Board*

Connie Niva  
*Past Chair of the Board*

Theodor Baseler  
*Member*

Scott Carson  
*Member*

Harold Cochran  
*Member*

Laura Jennings  
*Member*

Kevin Massimino  
*Student Regent*

Lura Powell  
*Member*

Ron Sims  
*Member*

Elson S. Floyd  
*Secretary Ex Officio*

Roger Patterson  
*Treasurer Ex Officio*

## Executive Officers

Elson S. Floyd  
*President*

Daniel Bernardo  
*Provost and*  
*Executive Vice President*

David Cillay  
*Vice President, Global Campus*

John Fraire  
*Vice President, Student Affairs*

Christopher Keane  
*Vice President, Research*

Joan King  
*Associate Vice President/  
Chief Budget Officer*

Bill Moos  
*Director, Intercollegiate Athletics*

Roger Patterson  
*Vice President, Business and Finance*  
*and Interim Chief Information Officer*

## Academic Deans

William Andrefsky Jr.  
*Graduate School*

Patricia Butterfield  
*College of Nursing*

Candis Claiborn  
*Voiland College of Engineering*  
*and Architecture*

Daryll DeWald  
*College of Arts and Sciences*

Ron Mittelhammer  
*College of Agricultural, Human, and*  
*Natural Resource Sciences*

M. Grant Norton  
*University Honors College*

Lawrence Pintak  
*The Edward R. Murrow College of*  
*Communication*

Gary Pollack  
*College of Pharmacy*  
*Vice Provost, Health Sciences*

Bryan Slinker  
*College of Veterinary Medicine*

Jay Starratt  
*Libraries*

Mike Trevisan  
*College of Education*

David Whidbee  
*Interim Dean,*  
*Carson College of Business*

## Campus Chancellors

Lisa J. Brown  
*Chancellor, WSU Spokane*

H. Keith Moo-Young  
*Chancellor, WSU Tri-Cities*

Mel Netzhammer  
*Chancellor, WSU Vancouver*

# Officials and Staff • Commencement 2014 University Highlights • Academic Regalia



*Bus stop in front of Bohler Athletic Complex.*

#### PHOTOGRAPHY AND VIDEO COVERAGE

Image Studios, PO Box 9699, Moscow, ID 83843, 509-332-0964, will provide the photography for commencement. A proof will be mailed to each graduate and photos can be viewed online at [www.gradwsu.com](http://www.gradwsu.com). Parents and friends of the graduates are asked to remain in their seats during the ceremonies.

## Commencement Officials and Staff

Steve Barke  
*Chi Alpha Christian Fellowship*

Marilyn Bender  
*Veterinary Medicine*

Staci Bicklehaupt  
*Education*

Chris Boyan  
*Transportation Services*

John Busuego  
*U.S. Army ROTC*

Debbie Brood  
*Business*

Greg Cain  
*U.S. Air Force ROTC*

Alex Cox  
*Graduate Student*

Russ Driver  
*Beasley Coliseum*

Alanna Ellis  
*Agricultural, Human, and Natural  
Resource Sciences*

Samantha Gizerian  
*Veterinary Medicine*

Donna Green  
*Engineering and Architecture*

Angela Hammond  
*Education*

Theresa Hanford  
*Image Studios*

Steve Hansen  
*WSU Police*

Teri Hansen  
*Commencement Operations Manager*

Joyce Harbison  
*Pharmacy*

Christopher Heatherly  
*U.S. Army ROTC*

Cindy Held  
*WSU Visitor Center*

Cassandra Hernandez  
*WSU Global*

Jim Huggins  
*Image Studios*

Nelda Hume  
*Engineering and Architecture*

Mary Jenkins  
*President's Office*

Doug Juneau  
*Arts and Sciences*

Leslie Martin  
*Students Book Corporation*

Mike McClintock  
*U.S. Navy ROTC*

Nathan Neale  
*GPSA President*

Ian Ortlieb  
*Transportation Services*

Arlene Parkay  
*Arts and Sciences*

Richard Partain  
*U.S. Air Force ROTC*

Deana Penton  
*Communication*

Julia A. Pomerenk  
*Registrar's Office*

Jared Powell  
*ASWSU President*

Kanale Rhoden  
*Northwest Public Television*

Renaë Richter  
*Nursing—Spokane*

Ana Maria Rodriguez-Vivaldi  
*Arts and Sciences*

Waylon Safranski  
*Alumni Relations*

Jenny Saligumba-Graham  
*Graduate School*

Tom Saylor  
*Engineering Manager,  
Communication*

Patrick Starr  
*Beasley Coliseum*

Patricia Sturko  
*Graduate School*

David Turnbull  
*School of Music*

Chris VanHarn  
*Beasley Coliseum*

Tami Vik  
*Communication*

## COMMENCEMENT 2014

Washington State University, on the occasion of its fourteenth annual fall Commencement, cordially welcomes all those who have come to the Pullman campus to share in ceremonies honoring the graduating class of 2014. To class members, the Class of 2014, the University extends sincere congratulations.

WSU enrolls 28,686 students statewide. This includes 19,846 undergraduates and 4,150 graduate and professional students learning at the Pullman and Spokane campuses or through the Global Campus. At the Tri-Cities and Vancouver campuses, 4,690 undergraduate, graduate, and professional students are enrolled.

Commencement is the special occasion that provides public recognition of students' academic achievements. The transcript is the official document certifying the successful completion of specific academic requirements. The diploma is mailed after the ceremony.

The first WSU Commencement, held June 24, 1897, recognized eight students being advanced to degrees—three in engineering, one in biology, two in economics, and two in English. This followed a legislative act in 1895 empowering the college to grant

the usual academic and honorary degrees and issue diplomas.<sup>1</sup> With the construction of Bryan Hall in 1909, Commencement moved to the well-equipped Bryan Auditorium. Enrollment and the number of degree candidates increased over the years, and Commencement moved to Bohler Gymnasium following its construction in 1928. Following World War II and the burgeoning enrollment created by the return of students receiving veterans' benefits (G.I. Bill), Commencement was moved outdoors to Rogers Field in the football stadium (1949-1973). Because it was always possible that inclement weather would disrupt the ceremonies, it was necessary to duplicate arrangements in Bohler Gymnasium. However, only twice in those years—1954 and 1963—was it necessary to move the outdoor ceremony indoors. In 1973, with the completion of Beasley Coliseum, Commencement moved indoors permanently.

In 1986, the University's Commencement Committee recommended decentralizing Commencement to make the event more personal for graduating students. The WSU administration approved, and from 1986 through 1996, an All-University Commencement Assembly was held in the coliseum, and individual college ceremonies took place in the coliseum, Bohler Gymnasium, Bryan Auditorium, Compton Union Building Ballroom, and Hollingbery Fieldhouse. Beginning with the 100th Commencement in May 1996, the college ceremony times were changed to allow some to precede the All-University Assembly. In 1998, due in part to construction in Bohler, the administration approved a Commencement Committee recommendation to hold two ceremonies. Starting in 2000, a three-ceremony format (two ceremonies in the morning and one in the afternoon) was instituted. There was a historic Commencement change during the 2001-

Within academic areas on either side of the floor, the names of the degree recipients are called in random order as they approach the readers. Students will be viewed on big screens as their names are read.

Names in the Fall 2014 Commencement Program include August 2014 degree candidates and December 2014 degree candidates who met the application deadline. Those previously awarded degrees are noted with an asterisk (\*). The program is not a listing of those attending the ceremony.

Appearance of a name in this program is presumptive evidence of graduation and graduation honors, but it must not in any sense be regarded as conclusive. Notation on the university transcript remains the official testimony of degree possession.

<sup>1</sup>*Historic sketch of the State College of Washington, 1890-1925*, by E.A. Bryan



2002 academic year. For the first time, WSU held two Commencements, one during fall semester (December 15, 2001) and the other during spring semester (May 11, 2002).

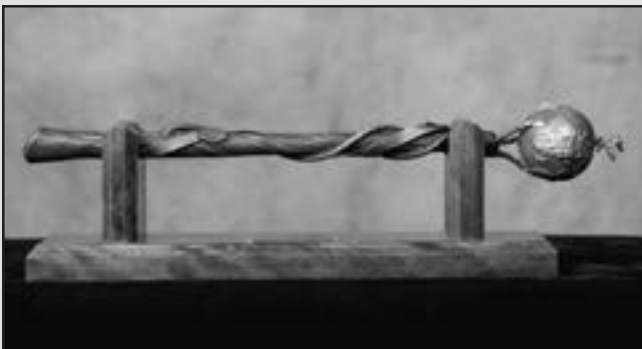
This is the University's fourteenth fall commencement since its founding in 1890.

### THE UNIVERSITY MACE

The University Mace, a traditional symbol of authority, will lead the processional today. The mace is carried by the chair of the Faculty Senate with an honor guard consisting of the presidents of the undergraduate and graduate and professional student associations. Craig Parks carries it today, accompanied by Jared Powell, president of the Associated Students of WSU, and Nathan Neale, president of the Graduate and Professional Student Association of WSU.

Created in 1985, the two-foot-long, nine-pound scepter is cast in silver and bronze and features a globe atop a laurel branch, wrapped in a silver ribbon and inscribed "Washington State University." According to designer and craftsman Tim Doeblner of WSU's Department of Fine Arts, "the globe represents the universality of education and the quest for knowledge. Laurel crowns were presented to academicians by the ancient Greeks."

The anvil is a symbol of forging and molding education, rather than forcing it upon students.



## Washington State University Highlights, 2011–2014

### 2011

- WSU sleep research was named one of the top 100 stories of 2010 for the article “Sleep Switch Found in the Brain” in the January-February special issue of *Discover* magazine.
- Ted Koppel, television news veteran and anchor of ABC’s *Nightline* for 25 years, visited the Pullman campus and was presented with the 2011 Edward R. Murrow Award for Lifetime Achievement in Broadcast Journalism.
- WSU joined state and Spokane community leaders to celebrate the groundbreaking for the Biomedical and Health Sciences Building at the Riverpoint Campus in Spokane.
- Legendary actress and comedian Betty White became an honorary Washington State University alumna. WSU Provost Warwick Bayly presented her with a white doctor’s coat at the Washington State Veterinary Medical Association’s (WSVMA) centennial gala in Yakima.
- Mike Leach was named the Cougars’ head football coach. Leach brings a proven record of winning to Pullman, including 10 bowl bids in 10 seasons.
- Gregory W. Yasinitsky, Regents Professor and coordinator of jazz studies in the WSU School of Music, was the 11th recipient of the WSU Eminent Faculty Award.
- The Paul G. Allen Center for Global Animal Health was formally dedicated in Pullman. The research facility houses a state-of-the-art infectious disease research center for investigating emerging diseases throughout the world.
- New premium seating and a new press box opened on the south side of Martin Stadium, marking the conclusion of an \$80 million construction project.
- Veteran journalist Dan Rather was honored at the 38th Edward R. Murrow Symposium at WSU Pullman.
- Sue Clark, Regents Professor and chair of the chemistry department, was awarded the American Chemical Society (ACS) 2012 Garvan-Olin medal for outstanding leadership in nuclear chemistry and radiochemistry and ongoing efforts to increase the participation and inclusion of women in science.
- George R. Pettit (’52 B.S. Chemistry), an organic chemist who pioneered the search for anti-cancer compounds in marine organisms and terrestrial insects and plants, accepted the 2012 Regents Distinguished Alumnus Award.
- Emile C. (Mel) Netzhammer III, who has served as provost and vice president for academic affairs for Keene State College since 2006, was named the new chancellor of Washington State University Vancouver.
- Michael J. Smerdon, Regents Professor in the School of Molecular Biosciences in the College of Veterinary Medicine, received the 2012 Eminent Faculty Award. Smerdon has conducted groundbreaking research on how the body repairs DNA damage caused by chemicals and UV light.
- Demolition began on the Hollingbery Fieldhouse Annex to make way for construction of a new \$61 million football operations building. The new facility will serve as a home for the Cougar football program.
- The campus community celebrated the 25th anniversary of the founding of the Office of Multicultural Student Services.
- The University established a new tradition in September, selecting an official WSU tartan after 34,000 votes were cast by the Cougar Nation. WSU tartan merchandise, including ties, scarves, and other products, are available.

### 2013

- The new Brelsford WSU Visitor Center in downtown Pullman, near Reaney Park, was dedicated. The facility serves as the University’s new “front door,” providing a welcoming environment and information about WSU to its guests.
- The new \$96 million Veterinary Medical Research Science Building opened its doors. The facility houses state-of-the-art biomedical research laboratories and offices for the health science teaching and research programs
- Football fans welcomed the arrival of one the few high-definition video display scoreboards in college football. Located at the east end of Martin Stadium, it measures 73 feet wide and 36 feet high—more than double the size of the previous board.
- Three hundred students moved into the new \$32.6 million Northside Residence Hall, the second new residence hall constructed on the Pullman campus since the early 1970s.
- The Federal Aviation Administration selected WSU and the Massachusetts Institute of Technology (MIT) to co-lead the new Center of Excellence for Alternative Jet Fuels and the Environment. The center aims to foster a new industry focused on developing alternative jet fuels.
- The Cougar family lost one of its most beloved leaders with the passing of Dr. Glenn Terrell, who served as WSU president from 1967 to 1985. He was 93.
- Washington grape growers and wine makers made a \$7.4 million commitment to support a new Washington State University Wine Science Center, planned for construction in the Tri-Cities.
- The College of Liberal Arts and the College of Sciences merged to form the College of Arts and Sciences.

- In the fall semester, a full third of the freshman class came from ethnically diverse backgrounds, up from 12 percent just five years ago. Ethnic minorities represented a quarter of the total WSU Pullman student population—the largest percentage in university history.
- The Paul G. Allen School for Global Animal Health awarded the first certificates in global animal health to two doctoral students. The certificate is the only one of that specialty offered in the United States and maybe worldwide.
- The first 23 students in the University's mechanical engineering program at WSU North Puget Sound at Everett received their diplomas in May. The program in Everett was launched as part of a state initiative to increase the number of engineering and computer science students and graduates.
- A team of WSU student interns spent the summer working in communities devastated by the March mudslide along State Route 530. The internship program was designed to help the communities of Darrington and Arlington regain their footing economically, environmentally, and socially.
- The Board of Regents approved renaming two of the University's colleges to recognize alumni. The College of Business became the Carson College of Business, and the College of Engineering and Architecture became the Voiland College of Engineering and Architecture. The names honor lifetime contributions that Scott and Linda Carson and Gene and Linda Voiland have made to the colleges, to the university, and to their respective industries.

## 2014

- Diane Nash—Freedom Rider, sit-in leader, and key architect of the 1960s civil rights movement—spoke on the Pullman campus in commemoration of Dr. Martin Luther King Jr. Day.
- World-renowned poet, writer, commentator, activist, and educator Nikki Giovanni lectured on the Pullman campus. She has authored more than 30 books and is one of the most widely read American poets.
- For the second year in a row, *U.S. News and World Report* ranked Washington State University among the top 10 best online graduate business programs for its MBA and Executive MBA degrees.
- The University broke ground for the construction of a new \$52.8 million, 96,000-square-foot interdisciplinary clean technology laboratory. The facility will house science and engineering programs and help address a variety of global and environmental challenges.
- Blended Learning, the first in a series of wines created by students in WSU's viticulture and enology program, was introduced. The University has partnered with the state's winemakers and grape growers to help Washington become the second-largest wine producing state in the country.
- The Cougar football program's new \$61 million football operations building opened its doors in time for the first home game of the 2014 season.
- *The Daily Evergreen*, the WSU student-produced newspaper, was named the best all-around campus newspaper in the Northwest at the annual regional conference of the Society of Professional Journalists.
- *Smithsonian Magazine* presented Michael Skinner, a WSU professor of biological sciences, with an American Ingenuity Award for his pioneering work in the field of transgenerational epigenetics: the study of inherited genetic changes that can't be explained by traditional genetics.
- A research team led by professors Su Ha and M. Grant Norton developed the first fuel cell that can directly convert fuels, such as jet fuel or gasoline, to electricity—providing a dramatically more energy-efficient way to create electric power for planes or cars.
- The building that houses broadcast news facilities in the Edward R. Murrow College of Communication was dedicated to legendary sports broadcaster, journalist, and WSU alumnus Keith Jackson ('54).
- The Board of Regents directed university leadership to pursue approval for an independently accredited medical school at WSU Spokane. Leaders of WSU and the University of Washington agreed to dissolve their partnership for remote-site medical education for Washington, Wyoming, Alaska, Montana, and Idaho (WWAMI). Through that partnership, WSU had provided education to first-year medical students for more than 40 years.
- On December 13, 2014, one of the best groups of students ever in the history of Washington State University graduated during the annual Commencement ceremony in Beasley Coliseum.



Victory Bell, Lewis Alumni Centre

## ACADEMIC REGALIA

Academic regalia arose through evolution and modification of the robes worn by medieval students, who were usually clerics in the cathedral schools and monasteries established by the church. As early as 1321, a medieval statute required that all doctors, licentiates, and bachelors wear academic gowns and hoods. Gowns were necessary for warmth in the unheated medieval buildings, and hoods may have been designed to cover tonsured heads. Today, immediately after receiving a charter, new institutions adopt a distinctive design for academic attire expressive of their individuality.

On May 26, 1895, a group of institutional representatives met at Columbia University to establish a uniform code for academic regalia in this country.

The approved academic attire for all graduates is composed of a cap and gown. For master's and doctoral graduates, a hood is included. The basic article of attire is the gown, usually black in color, and similar in design for all degrees with the sleeves being the principal indicator of degree level. Gowns for those graduating with a bachelor's degree have pointed sleeves; the sleeves on master's gowns arc away at the front; and doctoral gowns have round, bell-shaped sleeves. Bachelor's and master's gowns are untrimmed while doctoral gowns feature distinctive velvet facing down the front and three velvet bars on each sleeve.

The hood has become the colorful standard-bearer of academic symbolism. By examining the hood, an informed observer should be able to identify the degree level, the academic field of study in which the degree was earned, and the institution that conferred the degree. The hood is made of the same material as the gown. Hood length varies according to degree: bachelor's—three feet, master's—three and a half feet, and doctor's—four feet in length and has panels at the sides. The color or colors of the hood lining indicate the institution that conferred the degree (crimson and gray for WSU). The hood is trimmed or edged in a border of velvet either two, three, or five inches in width for the respective degrees. The border color represents the faculty or field of study in which the degree was awarded. At WSU, bachelor's degree candidates do not wear hoods.

The approved cap of the academic costume is the mortarboard or Oxford cap—a stiff board nine inches square, placed on a soft cap and joined in a pointed design in front and back. The color is always that of the gown and uniformly black for the four-year degrees. The use of velvet has been reserved for the cap of the doctor's degree. A silk cord with a tassel made of many threads is attached to a button in the center of the board.

A distinctive commencement rental gown for students earning Ph.D. and Ed.D. degrees debuted in spring 2012. The gown is crimson with gunmetal-gray velvet accents and a matching velvet tam. WSU is the only university with a custom rental gown. The purchased version of the custom gown is designed with a split hood, two silver WSU shield medallions holding the hood in place, two WSU medallion cufflinks on each sleeve, and other embellishments.

The committee of the American Council on Education on its "Academic Costume Code" states the following:

*For all academic purposes—including trimming of doctor's gowns, edging of hoods, and tassels of caps—the colors associated with the different subjects are as follows:*

Agriculture: Maize  
 Arts, Letters, Humanities: White  
 Commerce, Accountancy,  
 Business: Drab  
 Communication: Crimson  
 Dentistry: Lilac  
 Economics: Copper  
 Education: Light Blue  
 Engineering: Orange  
 Fine Arts including  
 Architecture: Brown  
 Forestry: Russet  
 Home Economics: Maroon  
 Law: Purple  
 Library Science: Lemon  
 Medicine: Green  
 Music: Pink  
 Nursing: Apricot  
 Oratory (Speech): Silver Gray  
 Pharmacy: Olive Green  
 Philosophy: Dark Blue  
 Physical Education: Sage Green  
 Public Administration,  
 including Foreign Service:  
 Peacock Blue  
 Public Health: Salmon Pink  
 Science: Golden Yellow  
 Social Work: Citron  
 Theology: Scarlet  
 Veterinary Medicine: Gray

For more on academic regalia visit [www.acenet.edu](http://www.acenet.edu).





**Jordan Schnitzer**  
*President,  
Harsch Investment  
Properties*

## COMMENCEMENT SPEAKER AND HONORARY DEGREE RECIPIENT

Native Oregonian **Jordan Schnitzer** grew up in Portland. He is a 1973 graduate of the University of Oregon and in 1976 received his doctorate from the Northwestern School of Law at Lewis and Clark College.

Shortly thereafter, Jordan began working full time at his family's real estate company, Harsch Investment Properties, a Portland-based real estate acquisition, development, and management company started by his father and mother in 1950. He is now the president of the company with regional offices located in Seattle, Portland, San Francisco, Sacramento, Las Vegas, and San Diego and oversees a portfolio of office, industrial, retail, and multifamily properties. With a staff of over 200 professionals, Jordan has built Harsch into one of the largest privately held real estate property and management companies in the western United States.

In addition to his role as CEO at Harsch, Jordan has served on over 31 civic and cultural boards including the Portland Art Museum, Japanese Garden Society of Oregon, High Desert Museum, Citizen Crime Commission, and Friends of Astoria Column, to name a few.

Following his family's commitment to support art and culture, Jordan has created one of the nation's largest contemporary print collections, which is shared with the public. He and his family foundation have funded and organized over 90 exhibitions of work from his collection which has traveled to over 60 museums including exhibitions at the Washington State University Art Museum, Portland Art Museum, Bellevue Art Museum, Los Angeles County Museum of Art, Legion of Honor Museum in San Francisco, Detroit Institute of Art, and many others.

Jordan has received many honors and awards including the Portland State University President's Award for Outstanding Philanthropy, State of Oregon Governor Arts Awards, Volunteer of America Oregon DePreist Award for Excellence, Catlin Gable Distinguished Alumni Award, and the University of Oregon Presidential Medal and the International Print Center in New York Award of Excellence for his touring art program. He is also very proud of the renovation of the art museum at the University of Oregon, which was renamed in his honor in 2005.

Jordan lives in Portland with his family.



# Candidates for Advanced and Professional Degrees



Names in the Fall 2014 Commencement Program include August 2014 degree candidates and December 2014 degree candidates who met the application deadline.

The program is not a listing of those attending the ceremony. Names of May 2015 degree candidates will appear in the spring program.

## Candidates for Advanced Degrees

### The Graduate School

The following candidates will be presented by Dean of the Graduate School William Andrefsky.

### Doctor of Design

Solmaz Amiri

M.E., Islamic Azad University  
Thesis: Testing a Geospatial Predictive Policing Strategy: Application of ArcGIS 3D Analyst Tools for Forecasting Commission of Residential Burglaries.  
Major Advisor: Kerry Brooks

\*Mengyuan Xu

B.E., Wuhan University  
M.A., Clemson University  
Thesis: A GIS-based Pedestrian Network Model for Assessment of Spatial Accessibility Equity and Improvement.  
Major Advisor: Kerry Brooks

### Doctor of Education

Kathleen Chatfield

B.A., Arizona College of the Bible  
M.Ed., Oregon State University  
Thesis: The Faculty Experience of Structured Hybrid Course Design and Its Effect on Student Learning.  
Major Advisor: Richard Sawyer

\*Stacy Hill

B.A., Western Washington University  
M.I.T., Whitworth University  
Thesis: Teacher Cognition and Practices: Four Case Studies of Teachers in Low-SES Schools.  
Major Advisor: Richard Sawyer

\*Bervil Marsh

B.S., Central Washington University  
M.S., University of Oregon  
Thesis: School Board Members' Perceptions of the Impact of Professional Development on Their Board-Related Activities.  
Major Advisor: Forrest Parkay

Teresa Ohrt

B.S., Oklahoma Wesleyan University  
M.A., University of Northern Iowa  
Thesis: A Case Study: Administrators' Expectations and Teachers' Perceptions of Professional Development.  
Major Advisor: Tamara Nelson

\*Fabian Castilleja

B.A., M.Ed., Eastern Washington University  
Thesis: Understanding Principals' Perceptions on Hiring High Quality Teachers in Washington State: A Critical Race Perspective.  
Major Advisor: Paul Pitre

Douglas Christensen

B.A., Whitman College  
M.A., Heritage University  
Thesis: Tackling New Initiatives: How One Central Office Supports Principals in Their Efforts to Implement New Teacher Evaluation Criteria.  
Major Advisor: Michele Acker-Hocevar

\*Ryan Christoph

B.A., University of Laverne  
M.I.T., Whitworth University  
Thesis: Organizing Data for Instructional Use in One Elementary School: A Proposal For an Action Research Study.  
Major Advisor: Gail Furman

\*John Mancinelli

B.Ed., Central Washington University  
M.S., Southern Oregon University  
Thesis: What Supports Do Principals Need in Order to Implement the TPEP?  
Major Advisor: Michele Acker-Hocevar

Chris Martinson

B.A., Washington State University  
Thesis: Errors in Communication Between Secondary Principals and Parents in the Pacific Northwest.  
Major Advisor: Gordon Gates

Dan Sakaue

B.S., M.S., University of Oregon  
Major Advisor: Paul Goldman

### Doctor of Nursing Practice

Manuela Orban

B.A., University of California, Riverside  
B.S., Loma Linda University

Jeffrey Schilt

B.S., M.Nurs., Washington State University

### Doctor of Philosophy

#### AMERICAN STUDIES

Darrell Hogge

B.A., B.A., B.S., Washington State University  
Thesis: People Returning to the Reservation.  
Major Advisor: John Streamus

#### ANTHROPOLOGY

Ronald Bocinsky

B.A., University of Notre Dame  
Thesis: Landscape-based Null Models for Archaeological Inference.  
Major Advisor: Timothy Kohler

Adam Rorabaugh

B.A., Washington State University  
M.A., Western Washington University  
Thesis: Investigating Restricted Knowledge in Lithic Craft Traditions Among the Pre-contact Coast Salish.  
Major Advisor: Colin Grier

#### BIOLOGICAL AND AGRICULTURAL ENGINEERING

Mark De Kleine

B.S., M.S., Michigan State University  
Thesis: Semi-Automated End-Effector Concepts for Localized Removal and Catching of Fresh-Market Apples  
Major Advisor: Manoj Karkee

Difeng Gao

B.E., Northwest A & F University  
Thesis: Morphology Engineering of Oleaginous Fungus *Mortierella Isabellina* for Lipid Production.  
Major Advisor: Shulin Chen

\*Yang Jiao

B.E., China Agricultural University  
Thesis: Heating Behavior Study of Low Moisture Foods in Radio Frequency Treatments.  
Major Advisor: Juming Tang

\*Shi-Shen Liaw

B.S., National Pingtung University of Science and Technology  
Thesis: Understanding the Formation and Separation of C1-C4 During the Pyrolysis and Torrefaction of Lignoce.  
Major Advisor: Manuel Gracia-Perez

- Donglei Luan  
B.S., Petroleum University  
M.S., Ocean University of  
China  
Thesis: Application of  
Computer Simulation  
Models in Developing  
Industrial Scale Microwave  
Heating Process.  
Major Advisor: Juming  
Tang
- Chao Miao  
B.S., South China  
University of Technology  
Thesis: Hydrothermal  
Process of Microbial  
Biomass to Produce Bio-oil  
and Hydrocarbon.  
Major Advisor: Shulin  
Chen
- \*Yasin Osroosh  
B.S., Isfahan University of  
Technology  
M.S., Bu-Ali Sina  
University  
Thesis: Precision Irrigation  
of Fuji Apple Trees in the  
Pacific Northwest.  
Major Advisor: R. Troy  
Peters
- \*Manuel Pelaez Samaniego  
Titulo, Universidad de  
Oriente  
Mestre, Universidade  
Estuadual De Campinas  
Thesis: Thermochemical  
Pre-Treatment of  
Underutilized Woody  
Biomass for Manufacturing  
Wood Composites.  
Major Advisor: Vikram  
Yadama
- Sayed Hossein Sadeghi  
B.S., University of Tehran  
M.S., Isfahan University of  
Technology  
Thesis: New Methods to  
Evaluate and Adjust the  
Design and Operation of  
Center Pivot and Micro-  
Irrigation Laterals for  
Improved Uniformity.  
Major Advisor: Troy Peters
- \*Jianfeng Zhou  
B.E., M.E., Northwestern  
Agricultural University  
Thesis: Mechanical  
Harvesting Technologies  
for Fresh Market Sweet  
Cherry.  
Major Advisor: Qin Zhang
- BOTANY**
- \*Andrea Dixon  
B.A., University of Central  
Missouri  
Thesis: The Role of  
Environmental and  
Abiotic Constraints on  
Range Limits of Endemic  
Species.  
Major Advisor: Jeremiah  
Busch
- \*Joshua Rosnow  
B.S., University of  
Minnesota  
Thesis: Uniqueness of  
C4 Photosynthesis in  
Suaediodeae.  
Major Advisor: Eric  
Roalson
- BUSINESS  
ADMINISTRATION**
- \*Darcie Costello  
B.S., Xavier University  
Master, University of  
Denver  
Thesis: Analyzing Fairness  
and its Impact on Tax  
Compliance.  
Major Advisor: Debra  
Sanders
- Brett Josephson  
B.S., M.S., University of  
Idaho  
Thesis: The Effect of  
Marketing Strategy  
on Firm Financial  
Performance.  
Major Advisor: Jean  
Johnson
- \*Chieh Lee  
B.S., Washington State  
University  
Thesis: Supply-Chain Risk  
Management.  
Major Advisor: Charles  
Munson
- \*Aaron Wilson  
B.A., Brigham Young  
University  
M.Acc., Wright State  
University  
Thesis: Effect of the  
Dod-Frank Act on  
Whistleblowing Provision.  
Major Advisor: Bernard  
Wong on Wing
- CHEMICAL ENGINEERING**
- \*Timothy Ewing  
B.S., M.S., Washington  
State University  
Thesis: Microbial Fuel  
Cells Powering Wastewater  
Treatment.  
Major Advisor: Haluk  
Beyenal
- Timothy Harrington  
B.S., University of  
California, San Diego  
M.S., University of  
California, Irvine  
Thesis: Bioelectrochemical  
Systems for Energy and  
Biocommodity Production.  
Major Advisor: Haluk  
Beyenal
- Courtney Herring  
B.S., University of Idaho  
Thesis: Characterization  
of Particulate Pollution  
by Aerosol Mass  
Spectrometry.  
Major Advisor: Timothy  
VanReken
- \*Byeong Wan Kwon  
B.E., Washington State  
University  
Thesis: Molybdenum  
Dioxide (MoO<sub>2</sub>)-Based  
Anode for Liquid  
Hydrocarbon-Fueled SOFC  
Applications.  
Major Advisor: Richard  
Zollars
- CHEMISTRY**
- \*Amber Donley  
B.S., University of  
Michigan, Ann Arbor  
Thesis: Investigating  
2-hydroxy-2-methylbutyric  
Acid Complexation with  
f-Elements in Mixed  
Solvents.  
Major Advisor: Sue Clark
- \*Jamie Doyle  
B.S., Nazareth College of  
Rochester  
Thesis: Optimization  
of Electrochemical  
Pre-Concentration of  
f-Elements.  
Major Advisor: Sue Clark
- Mihindra Dunuwille  
B.S., University of  
Colombo  
Thesis: Thermo-Chemical  
Stabilities of Non-  
Conventional Energetic  
Materials: Nitrate,  
Perchlorate and Perox.  
Major Advisor: Choong-  
Shik Yoo
- Yasaman Ghadar  
B.S., Shiraz University  
M.S., Iran University of  
Science & Technology  
Thesis: Complex Network  
Analysis of Static and  
Dynamic Properties  
of Aqueous: Organic  
Interfaces.  
Major Advisor: Aurora  
Clark
- Benjamin Kasten  
B.S., Missouri Baptist  
University  
Thesis: Development of  
Ligands and Conjugation  
Strategies for Technetium-  
99m Carbonyl Cores  
in Targeted Imaging  
Molecules for Cancer  
Applications.  
Major Advisor: Paul Benny
- Manuja Lamabadusuriya  
B.S., University of  
Colombo  
M.S., The University of  
New South Wales  
M.S., Kansas State  
University  
Thesis: Ion Mobility  
Spectrometry in Liquid  
Phase.  
Major Advisor: Herbert Hill
- \*Mathew Snow  
B.S., Brigham Young  
University, Idaho  
Thesis: Detection of Ultra-  
Trace Quantities of the  
Actinides and Cs from  
Environmental Samples.  
Major Advisor: Sue Clark
- Michael Williams  
B.S., University of  
Montana  
Thesis: Evaluation  
of Ion Mobility Mass  
Spectrometry for Discovery  
of Metabolic Biomarkers of  
Colon Cancer.  
Major Advisor: Herbert Hill

\*Xing Zhang  
B.S., Hunan University  
Thesis: Application of  
HT-apIMtofMS to Global  
Metabolomics.  
Major Advisor: Herbert Hill

#### CIVIL ENGINEERING

Lisa Dilley  
B.S., Centre College  
B.S., Saint Martin's  
University  
Thesis: The Economic  
Feasibility of Pumped-  
Storage Hydropower.  
Major Advisor: Michael  
Barber

Nadia Frye  
B.A., Depauw University  
Thesis: Knowledge and  
Belief in Civil Engineering:  
Understanding Students  
Conceptual Understanding  
and Personal  
Epistemology.  
Major Advisor: William  
Cofer

\*Vijayathanan Noel  
Vijayaruba  
B.S., University of  
Peradeniya  
M.S., University of  
Nevada, Reno  
Thesis: Liquefaction-  
induced Downdrag on  
Piles and Drilled Shafts.  
Major Advisor: Balasingam  
Muhunthan

#### COMMUNICATION

Hannah Pedersen  
B.A., Washington State  
University  
M.S., Eastern Washington  
University  
Thesis: Online and  
Offline Social Support for  
Veterans.  
Major Advisor: Prabu  
David

Lok Pokhrel  
B.A., M.A., Tribhuvan  
University  
M.A., Georgia State  
University  
Thesis: News Media  
Framing of Obesity and  
Ethical Concerns.  
Major Advisor: Elizabeth  
Hindman

\*Weina Ran  
B.A., B.Econ., M.A.,  
Sichuan University  
Thesis: The Effectiveness of  
Entertainment-Education:  
Toward an Understanding  
of the Main Effects, the  
Persuasive Processes, and  
the Role of Ambivalence.  
Major Advisor: Stacey Hust

\*Zheng Zhu  
B.A., Beijing Second  
Foreign Language Institute  
Thesis: Representation  
of African Countries in  
Chinese Newspapers.  
Major Advisor: Jolanta  
Drzewiecka

#### COMPUTER SCIENCE

\*Barnan Das  
B.Tech., West Bengal  
University of Technology  
Thesis: Addressing  
Machine Learning  
Challenges to Perform  
Automated Prompting  
Major Advisor: Diane Cook

\*Md Haque  
B.S., University of Rajshahi  
M.E., University of Alaska,  
Fairbanks  
Thesis: Mining the  
Epigenome for (DMR)  
Using Active Learning and  
Imbalanced Class Learners.  
Major Advisor: Lawrence  
Holder

\*Samuel Long  
B.S., M.S., Western  
Washington University  
Thesis: Graph-Based  
Neural Image Analysis and  
Classification.  
Major Advisor: Lawrence  
Holder

\*Inna Rytsareva  
B.S., Amur State University  
M.S., Mississippi Valley  
State University  
Thesis: Parallel Algorithms  
for Large-Scale Graph  
Clustering on Distributed  
Memory Architectures.  
Major Advisor:  
Anantharaman  
Kalyanaraman

Jessica Smith  
B.S., M.S., University of  
Idaho  
Thesis: An Efficient  
Method of Reverse  
Engineering Non-  
Terminating Finite State  
Machines.  
Major Advisor: Carl Hauser

Hai Sun  
B.E., Beijing Institute of  
Technology  
M.E., Xidian University  
M.S., University of Maine  
Thesis: Design a High-  
Performance Table Lookup  
Accelerator for Flow  
Processing Application.  
Major Advisor: Min Sik  
Kim

Zachary Wemlinger  
B.A., University of New  
Mexico  
Thesis: Methods for  
Integrating Ontological  
Models into Smart  
Environment Activity  
Recognition Algorithms.  
Major Advisor: Lawrence  
Holder

#### CRIMINAL JUSTICE

Gassan Abess  
B.S., University of Sierra  
Leone  
M.A., University of Toledo  
Thesis: Legitimizing  
the Sierra Leone Police:  
Politics, Corruption, and  
Public Trust.  
Major Advisor: Otwin  
Marenin

\*Jennifer Albright  
B.S., B.S., University of  
Idaho  
Thesis: The Irony of  
State Intervention: The  
Case of the Becca Bill in  
Washington State.  
Major Advisor: Jacqueline  
Vanwormer

\*Heeuk Lee  
B.A., University of North  
Florida  
Thesis: Contextual  
Characteristics,  
Perceptions of Police, and  
Support for Community  
Policing.  
Major Advisor: Otwin  
Marenin

Stephanie Mizrahi  
B.A., University of the  
Pacific  
Thesis: From Panic to  
Policy.  
Major Advisor: Otwin  
Marenin

#### CROP SCIENCE

Emi Kimura  
B.S., M.S., University of  
Wyoming  
Thesis: Sustainable  
Intercropping of Switch  
Grass and Hybrid Poplar  
for Bioenergy Production.  
Major Advisor: Steven  
Fransen

Erik Landry  
B.S., University of  
Connecticut  
M.S., University of Guelph  
Thesis: Faba Bean (Vican  
Baba L.): A New Pulse  
Crop for Southeastern  
Washington.  
Major Advisor: Clarice  
Coyne

#### ECONOMICS

\*Gnel Gabrielyan  
Diploma, Armenian State  
Agrarian University  
M.S., Louisiana State  
University & Agricultural  
& Mechanical College  
Thesis: Essays on Hop  
Price Formation and the  
Brewing Industry.  
Major Advisor: Tom Marsh

\*Bing Han  
B.A., Dongbei University  
of Finance & Economics  
Thesis: Three Essays on  
Product Quality and  
Sequential Auctions.  
Major Advisor: Hayley  
Chouinard

\*Yingzi Li  
B.Econ., Jiangnan  
University  
M.Econ., Liaoning  
University  
Thesis: Essays on  
Commodities Markets and  
Consumer WTP for Apple  
Attributes.  
Major Advisor: T. Randall  
Fortenberry



Boying Liu  
B.E., M.S., China  
Agricultural University  
Thesis: Environmental  
Policy, Greenhouse Gas  
Polluting Inputs, and Life-  
Cycle Analysis.  
Major Advisor: Richard  
Shumway

**EDUCATION**

Reima Abobaker  
B.A., Garyounis University  
M.A., University of Exeter  
Thesis: The Effect of  
Written Scaffolds on  
Different Proficiency  
Levels of L2 Listening  
Comprehension.  
Major Advisor: Tom  
Salisbury

Norah Alkhateeb  
B.A., Riyadh University of  
Girls  
M.A., Murray State  
University  
Thesis: Female General  
Education Teachers  
Knowledge of and  
Perceived Skills Related to  
Learning Disabilities.  
Major Advisor: Darcy  
Miller

Abdullah Alrubaian  
B.A., King Saud University  
M.Ed., Murray State  
University  
Thesis: General Education  
Teachers' Attitudes,  
Knowledge, and Strategies  
Related to Teaching  
Students with Learning  
Disabilities.  
Major Advisor: Darcy  
Miller

\*Lisa Bruna  
B.A., Kansas State  
University  
Thesis: Efficacy of Eye  
Movement Desensitization  
and Reprocessing (EMDR)  
for Posttraumatic Stress  
Disorder.  
Major Advisor: Arreed  
Barabasz

Aichia Chang  
B.A., Huafan University  
M.S., State University of  
New York, University at  
Albany  
Thesis: An Investigation of  
ELL Student Engagement  
in Computer-assisted  
Language Learning Tasks.  
Major Advisor: Joy Egbert

Po Chen  
B.A., Wenzao Ursuline  
College of Languages  
M.Ed., Concordia  
University  
Thesis: The Relationship  
of Flow Experience, Need  
Satisfaction, Perceptual  
Learning Style Preferences,  
and EFL Self-Efficacy  
to EFL Online Learner  
Satisfaction.  
Major Advisor: Olusola  
Adesope

Kenneth Halpin  
B.A., Willamette  
University  
M.A., Gonzaga University  
Thesis: Former Student  
Athlete Donor Constraints  
at NCAA Institutions.  
Major Advisors: John  
Wong and Cathy Claussen

\*Stephanie Langston  
B.A., B.S., University of  
Georgia  
Thesis: Understanding and  
Quantifying the Roles of  
Perceived Social Support,  
Pet Attachment, and Adult  
Attachment in Pet Owners'  
Sense of Well-Being.  
Major Advisor: Phyllis  
Erdman

Nhu Mai  
B.S., University of Houston  
Thesis: Exploring the  
Indigenous Structure of  
Vietnamese Personality: A  
Lexical Approach.  
Major Advisor: Timothy  
Church

Nadia Nsir  
B.Pharm., B.A., M.A.,  
Al-Fateh University  
Thesis: Libyan English  
Language Teachers'  
Use of Social Media for  
Professional Development.  
Major Advisor: Joy Egbert

\*Robert Owens  
B.A., Idaho State  
University  
Thesis: Evaluation  
Capacity Building in  
Domestic Violence Service  
Providers.  
Major Advisor: Michael  
Trevisan

\*Kristin Sergeant  
B.F.A., B.A., Arizona State  
University  
Thesis: Effects of  
Stereotype Threat on Low-  
Income Individuals.  
Major Advisor: Timothy  
Church

\*Juan Valdivia Vazquez  
Licenciado, Magister,  
Universidad Autonoma De  
Nuevo Leon  
Thesis: Test Adaptation  
Research: An Analysis of  
International and Cross-  
Cultural Testing Practices.  
Major Advisor: Brian  
French

\*Tingting Wang  
B.A., M.A., Northwest  
University  
Thesis: Exploring  
Engagement in Foreign  
Language Instructional  
Design and Practice.  
Major Advisor: Joy Egbert

**ELECTRICAL AND  
COMPUTER ENGINEERING**

Jackeline Abad Torres  
Titulo, La Escuela  
Politecnica Nacional  
Thesis: Analyzing Sparse  
Measurement and  
Actuation in Network  
Dynamics.  
Major Advisor: Sandip Roy

Saugata Biswas  
B.E., Nagpur University  
Thesis: Real Time Voltage  
Stability Monitoring and  
Control of Power Systems.  
Major Advisor: Anurag  
Srivastava

\*Rahul Dhal  
B.E., Biju Patnaik  
University of Technology  
Thesis: Consequence of  
Topological Changes in  
Cyberphysical Systems:  
A System-Theoretic  
Perspective.  
Major Advisor: Sandip Roy

Shaotong Guo  
B.S., Wuhan University  
Thesis: Parameter  
Identification for Double  
Fed Induction(DFIG)  
Generators Using Real  
Time Measurement Data.  
Major Advisor: Anjan Bose

\*Junho Hong  
B.S., M.S., Myongji College  
Ph.D., University College  
Dublin  
Thesis: Cyber Security of  
Substation Automation  
Systems.  
Major Advisor: Chen-  
Ching Liu

Hamed Khalilinia  
B.S., Shahid Rajae Teacher  
Training University  
M.S., Isfahan University of  
Technology  
Thesis: Sub-Synchronous  
Oscillation Monitoring.  
Major Advisor: Mani  
Venkatasubramanian

\*Jacob Murray  
B.S., Washington State  
University  
Thesis: Sustainable  
Wireless Network-on-Chip  
Architectures.  
Major Advisor: Partha  
Pande

\*Jiawei Ning  
B.S., Huazhong University  
of Science and Technology  
Thesis: Power System  
Distributed Oscillation  
Detection Based on  
Synchropasor Data.  
Major Advisor: Vaithianath  
Venkatasuramanian

Farshid Shariatzadeh  
B.S., Ferdowsi University  
of Mashhad  
M.S., K.N. Toosi University  
of Technology  
Thesis: Energy  
Management and Control  
for Active Distribution  
Systems.  
Major Advisor: Anurag  
Srivastava

\*Paul Wettin  
B.S., Washington State  
University  
Thesis: Design Space  
Exploration for Wireless  
Network-on-Chip  
Architectures.  
Major Advisor: Partha  
Pande

*\*Previously awarded degree*



\*Xinmin Yu  
B.E., Zhejiang University  
M.S., Beijing  
University of Posts &  
Telecommunications  
Thesis: Low-Power High-  
Data-Rate Millimeter-  
Wave Transceiver for  
Wireless Network-On-Chip  
Applications.  
Major Advisor: Deuk  
Hyoun Heo

Lin Zhang  
B.E., Huazhong University  
of Science and Technology  
M.E., Wuhan University  
Thesis: Validation, Testing  
and Implementation of  
the Linear State Estimator  
in a Real Power System.  
Major Advisor: Anjan Bose

#### ENGINEERING SCIENCE

Sadeg Abdurahman  
B.S., Nasser University  
M.S., Academy of Higher  
Studies Tripoli  
Thesis: Arundo  
Donax (Giant Reed)  
Phytohormone  
Function of Chromium  
(Cr) Removal.  
Major Advisor: Claudio  
Stockle

Amy Boaro  
B.S., University of Alaska  
Fairbanks  
Thesis: Microbial  
Community Perturbation  
Responses in Cellulolytic  
Bioreactors: An Integrated  
Meta'omics Approach.  
Major Advisor: Birgitte  
Ahring

Farah Elloy  
B.A., Gonzaga University  
Thesis: Activated Persulfate  
and CHP System Reactivity  
and Stability During ISCO.  
Major Advisor: Richard  
Watts

\*Celia Faiola  
B.S., Central Washington  
University  
Thesis: Chemical  
Characterization of  
Biogenic Secondary  
Organic Aerosol Generated  
from the Oxidation of  
Plant and Leaf Litter  
Emissions.  
Major Advisor: Timothy  
Vanreken

\*Tingting Li  
B.E., Jilin University  
M.S., Wuhan University  
Thesis: Exploring Efficient  
Cultivation Strategy  
for Microalgal Biofuel  
Production.  
Major Advisor: Shulin  
Chen

#### ENGLISH

Amber LaPiana  
B.F.A., Emerson College  
M.A., University of  
Massachusetts at Boston  
Thesis: The Cartographic  
Regionalism of Mary  
Hallock Foote, Helen Hunt  
Jackson, and Mourning  
Dove.  
Major Advisor: Donna  
Campbell

#### ENTOMOLOGY

Katharine Buckley  
B.S., Purdue University  
M.S., University of Florida  
Thesis: An Analysis of  
Native Habitat Restoration  
in Wine Grape Vineyards  
as a Pest Management  
Strategy.  
Major Advisor: David  
James

Tariq Mustafa  
B.S., University of Arid  
Agriculture  
M.S., University of  
Agriculture  
Thesis: Comparative  
Biology of Potato Psyllid,  
Bactericera cockerelli  
(Hemiptera: Trioziidae)  
Haplotypes.  
Major Advisor: Richard  
Zack

#### ENVIRONMENTAL AND NATURAL RESOURCE SCIENCE

Rebecca Bellmore  
B.S., Arizona State  
University  
Thesis: Hydrologic  
Dynamics Control  
Dissolved Organic Matter  
Export from Watersheds:  
Field Scale Processes in a  
Small, Artificially Drained  
Agricultural Catchment,  
and Patterns Across  
Ecosystems.  
Major Advisor: John  
Harrison

\*Jerome Sebadduka  
B.S., M.A., Makerere  
University  
Thesis: Mapping Dambos  
and Estimating Production  
and Emission of GHG  
from their Landscape  
Elements.  
Major Advisor: David  
Brown

#### GEOLOGY

\*William Starkel  
B.S., University of Georgia  
Thesis: Mapping Geologic  
Evolution and Petrogenesis  
of the McDermitt Caldera  
Center, Northern Nevada  
and Southern Oregon,  
USA.  
Major Advisor: John Wolff

#### HISTORY

\*Laura Arata  
B.A., University of  
Washington  
Thesis: Race and the Wild  
West.  
Major Advisor: Robert  
Bauman

\*Ai Wang  
B.A., M.A., Tianjin Normal  
University  
Thesis: City of the River:  
The Hai River and the  
Construction of Tianjin,  
1897-1948.  
Major Advisor: David Pietz

#### HORTICULTURE

Eliane Bodah  
B.S., M.Ed., University of  
Paso Fundo  
Thesis: Genetic  
Mechanisms of Fusarium  
Root Rot Resistance in  
Pisum Sativum L.  
Major Advisor: Amit  
Dhingra

Christopher Hendrickson  
B.S., Rutgers University,  
New Brunswick Campus  
M.S., Utah State University  
Thesis: Physiogenomics of  
Pear Ripening.  
Major Advisor: Amit  
Dhingra

Kara Lanning  
B.S., Pacific University  
Thesis: Determining  
the Time Course of  
Raspberry Bushy Dwarf  
Virus Movement from  
Pollination to Systemic  
Infection in Red Raspberry.  
Major Advisor: Patrick  
Moore

Lu Zhang  
B.S., Yangzhou University  
M.S., Shanghai Jiao Tong  
University  
Thesis: Temperature  
and Genotype Influence  
Sweet Cherry Pollination  
Biology.  
Major Advisor: Matthew  
Whiting

#### INDIVIDUAL INTERDISCIPLINARY

Antonie Bodley  
B.A., M.A., Washington  
State University  
Thesis: What Androids  
Will Teach Us About Being  
Human.  
Major Advisor: Joe  
Campbell

\*Kelvin Monroe  
B.Mus., Valdosta State  
University  
Thesis: Zero to Blaque:  
Preliminary Notes,  
Preparations, and a  
Groundwork for a Critique  
of Black Reason.  
Major Advisor: Victor  
Villanueva

Dana Vaux  
B.A., M.A., Washington  
State University  
Thesis: An Ethos of Place:  
Constructing a Historical  
Understanding of Place  
Experience.  
Major Advisor: David  
Wang

James Vaux  
B.A., Northwest University  
M.A., Fuller Theological  
Seminary  
Thesis: Relationship  
Conflict in Construction  
Management and How It  
Effects Performance and  
Profit.  
Major Advisor: Max Kirk

**MATERIALS SCIENCE AND ENGINEERING**

\*Alex Samuels  
B.S., University of Portland  
Thesis: Investigating the Speciation and Extraction of Commercially Important Metals from Spent Nuclear Fuel.  
Major Advisors: Aurora Clark and Nathalie Wall

Rachel Schoepner  
B.S., California Polytechnic State University, San Luis Obispo  
Thesis: Nanoscale Strengthening Mechanisms in Metallic Thin Film Systems.  
Major Advisor: David Bahr

Seyedeh Samaneh Tabatabaei  
B.A., Azad University of Tehran  
M.A., University of Tehran  
Thesis: Polymer Dynamics: Membrane Interactions and PhotoMechanics.  
Major Advisor: James Brazik

**MATERIALS SCIENCE**

Jia Cheng  
B.E., Sichuan Union University  
Thesis: Rapid Cure Epoxy Applied as Biomedical Materials.  
Major Advisor: Jinwen Zhang

Pavlo Rudenko  
Diploma, Karazin National University  
Major Advisor: Amit Bandyopadhyay

**MATHEMATICS**

\*Jared Aurentz  
B.S., University of Minnesota  
Thesis: Chebyshev Polynomial Spectral Transformations for Large Sparse Matrices.  
Major Advisor: David Watkins

\*Elizabeth Balmer  
B.A., Lewis and Clark College and Law School  
M.S., Oregon State University  
Thesis: Applications of Generalized Laplacian Matrices in Graph Tiling.  
Major Advisor: Matthew Hudelson

\*Sharif Ibrahim  
B.S., Walla Walla University  
Thesis: Data-Inspired Advances in Geometric Measure Theory: Generalized Surface and Shape Metrics.  
Major Advisor: Kevin Vixie

**MECHANICAL ENGINEERING**

Khaled Adam  
B.S., Garyounis University  
Thesis: Modeling Microstructural Evolution during Recrystallization of Hot Rolled High Strength AA 7050.  
Major Advisor: David Field

\*Sindhu Preetham  
Burugupally  
B.Tech., Indian School of Mines  
Thesis: Development of a Small Scale Resonant Engine for Micro and Mesoscale Applications.  
Major Advisor: Cecilia Richards

Christopher Chaney  
B.S., M.S., Washington State University  
Thesis: An Investigation of the Accuracy of Empirical Aircraft Design for the Development of an Unmanned Aerial Vehicle Intended For Liquid Hydrogen Fuel.  
Major Advisor: Konstantin Matveev

Nathaniel Darnall  
B.S., Washington State University  
Thesis: Home Tracking of Parkinson's Disease Dyskinesia and On/Off States.  
Major Advisor: David Lin

Mohammedmahdi Salavatian  
B.S., Iran University of Science & Technology  
M.S., Tarbiat Modares University  
Thesis: Matrix Damage Evolution in Fiber Reinforced Composite Materials.  
Major Advisor: Lloyd Smith

Tsun-Kay Jackie Sze  
B.S., Washington State University  
Thesis: Modeling and Simulation of Osmotic Phenomena the Application of Transporter Proteins in Microfluidic.  
Major Advisor: Prashunta Dutta

Hamid Torabi  
B.S., Ferdowsi University of Mashhad  
M.S., Shahrood University of Technology  
Thesis: Multiscale Modeling of Carbon Nanotube Turfs.  
Major Advisor: Sinisa Mesarovic

**MOLECULAR BIOSCIENCES**

\*Tyson Eucker  
B.S., Brigham Young University  
Thesis: Campylobacter Jejuni Infection Alters Host Cell Behavior via Activation of the Focal Complex.  
Major Advisor: Michael Konkel

\*Elizabeth Evans  
B.S., University of Louisiana at Monroe  
M.S., Mississippi State University  
Thesis: Identifying the Degradation of Retinoic Acid via Cytochrome P450 Enzymes, CYP26A1 and CYP26B1, in the Postnatal Testis.  
Major Advisor: Michael Griswold

Abigail Green  
B.S., University of Texas-Tyler  
Thesis: A Structure-Based Analysis of Bioengineering Targets in Phenyl Metabolism for Green Biotechnology Applications.  
Major Advisor: Chulhee Kang

Williard Werner  
B.S., Pacific Lutheran University  
Thesis: Biosynthesis of Unusual Amino Acids: Modification by Unusual Enzyme-Catalyzed Chemistry.  
Major Advisor: Susan Wang

**MOLECULAR PLANT SCIENCES**

\*Rhoda Brew-Appiah  
B.A., Reed College  
Thesis: Epigenetic and Post-Transcriptional Elimination of Celiac Causing Wheat Storage Proteins.  
Major Advisor: Dietrich von Wettstein

Joo Lee  
B.Econ., Ewha Womans University  
B.S., Ajou University  
Thesis: Functional Impacts of Arabidopsis Thaliana MATH-BTB/POZ Proteins on the ERF/AP2 Transcription Factor.  
Major Advisor: Hanjo Hellmann

Richard Sharpe  
B.S., M.S., Middle Tennessee State University  
Thesis: Gene Expression Profiling in Single Cell C4 and Related Photosynthetic Species in Suaedoideae.  
Major Advisor: Gerald Edwards and Amit Dhingra

*\*Previously awarded degree*

**\*Nuan Wen**

B.E., M.S., Northeast Normal University  
 Thesis: Celiac-Safe Wheat, Reaching One Objective by Two Approaches, Gluten Elimination by Random and Site-Directed Mutagenesis, and Detoxification by Ectopic Expression of "Glutenases".  
 Major Advisors: Dietrich von Wettstein and Hanu Pappu

**NEUROSCIENCE****Damien Guimond**

B.S., Universite De Provence  
 M.S., Universite De La Mediterranee  
 Thesis: Extracellular Cues Shape GABAergic Transmission in the Developing Hippocampus: The Case of Leptin.  
 Major Advisor: Gary Wayman

**\*Kathryn Jewett**

B.S., Washington State University  
 Thesis: Electrical and Chemical Manipulation of Network States in Vitro.  
 Major Advisor: James Krueger

**NURSING****\*Yi-Hsiu Liu**

B.S., National Taiwan University  
 M.Ed., University of Central Oklahoma  
 Thesis: Older Widowers in Taiwan: Exploring Older Men's Health-Related Quality of Life following Spousal Bereavement.  
 Major Advisor: Janet Katz

**\*Katherine Schoenfield**

B.S., University of Southern California  
 B.S., Humboldt State University  
 M.S., Sonoma State University  
 M.A., San Diego State University  
 Thesis: Physical Activity in Adolescents: Application of Constructs from the Transtheoretical Model.  
 Major Advisor: Kenn Daratha

**PHARMACEUTICAL SCIENCES****Heidi Medford**

B.S., Washington State University  
 Thesis: A Proposed Mechanism for Transcriptional Regulation of Cardiac Hypertrophy.  
 Major Advisor: Susan Marsh

**\*Kara Vogel**

B.S., University of Michigan, Ann Arbor  
 M.S., Michigan Technological University  
 Thesis: Novel Therapeutics and Pathomechanisms in Human Mendelian Disorders: Phenylketonuria, Maple Syrup Urine Disease, and Succinic Semialdehyde Dehydrogenase Deficiency.  
 Major Advisor: Michael Gibson

**PHYSICS****Sheng-Ting Hung**

B.S., Fu Jen Catholic University  
 M.S., National Sun Yat-Sen University  
 Ph.D., Katholieke Universiteit Leuven  
 Thesis: Using Sum Rules and Nonlinear Spectroscopy to Characterize the Effects of Excited State Transitions.  
 Major Advisor: Mark Kuzyk

**\*Zhaozhe Li**

B.S., M.S., Peking University  
 Thesis: Fermi Liquid Theory in Thin  $^3\text{He}$  Films.  
 Major Advisor: Philip Marston

**\*Anthony Smith**

B.A., B.S., Central Washington University  
 Thesis: Scattering Enhancements for Partially-Exposed Cylinders in Sand from Franz Waves.  
 Major Advisor: Philip Marston

**PLANT PATHOLOGY****Anna Leon**

B.S., Western Washington University  
 M.S., University of Washington  
 Thesis: Quantification of Fusarium Commune in Douglas-Fir Seeding Nurseries.  
 Major Advisor: Gary Chastagner

**Jinita Sthapit**

B.S., M.S. Tribhuvan University  
 M.S., University of Arkansas  
 Thesis: Wheat Landraces for Novel Resistance to Biotic and Abiotic Stresses.  
 Major Advisor: Deven See

**\*Ying Zhai**

B.S., Hebei University  
 M.S., Hebei Normal University  
 Thesis: Genomic Characterization and Molecular Investigations into Negative-Stranded RNA Viruses of Plants.  
 Major Advisor: Hanu Pappu

**POLITICAL SCIENCE****Craig Whiteside**

B.S., United States Military Academy  
 M.S., Long Island University, C. W. Post Campus  
 Thesis: The Smiling, Scented Men: The Political Worldview of the Islamic State in Iraq (2003-2013).  
 Major Advisor: Thomas Preston

**PREVENTION SCIENCE****Ashley Beck**

B.S., University of Idaho  
 M.A., Washington State University  
 Thesis: An Integrated Approach to Program Development: A Case Study of a Family-Based Obesity Prevention Program.  
 Major Advisor: Thomas Power

**PSYCHOLOGY****\*Lawrence Behmer**

B.A., University of Portland  
 M.S., Western Washington University  
 Thesis: Learning Modulates Mirror Neuron Activity Depending on Stimulus Modality: An EEG Study.  
 Major Advisor: Lisa Fournier

**Amy Bender**

B.A., California State University, San Bernardino  
 Thesis: Objective Markers of Sleep Disturbance as Predictors of Smoking Relapse.  
 Major Advisor: Dennis Dyck

\*Patrick Bertotti Metoyer  
 B.A., Gonzaga University  
 M.A., Loyola University of Chicago  
 Thesis: Alcohol Use Disorders (AUDs) Among University Students: A Psychometric Analysis of Craving Utilizing the Obsessive Compulsive Drinking Scale-Adolescents (OCDS-A) and DSM-5 AUD Proposed Criteria.  
 Major Advisor: G. Leonard Burns

\*Seth Davis  
 B.S., Linfield College  
 M.S., Western Illinois University  
 Thesis: Sex Differences in Morphine-Induced Antinociception and Reward Using a Chronic Inflammatory Pain Model in Rats.  
 Major Advisor: Rebecca Craft

Dana Grip  
 B.A., Barnard College  
 B.S., Norwegian University of Science and Technology  
 Thesis: Identification of Differential Predictors of ADHD Subtypes Using Laboratory Procedures.  
 Major Advisor: Paul Strand

Rachel Jones  
 B.A., University of Arkansas  
 Thesis: Borderline Personality Disorder Features and Pain: The Mediating Role of Anxiety Sensitivity.  
 Major Advisor: Sarah Tragger

\*Christina Low  
 B.S., University of Oregon  
 Thesis: Temperament in Young Children with Fragile X Syndrome.  
 Major Advisor: Masha Gartstein

\*Melissa Mehalick  
 B.A., Indiana University of Pennsylvania  
 Thesis: A Comparison of Analgesic Efficacy Between Opioids and Non-Opioids for Management of Chronic Pain.  
 Major Advisor: Karen Schmalig

Chad Sanders  
 B.S., B.A., Washington State University  
 Thesis: Examining the Impact of Formal versus Informal Planning on Performance in Cognitively Healthy Older Adults Using an Ecologically Valid Task Paradigm..  
 Major Advisor: Maureen Schmitter-Edgecombe

\*Kimber Saville  
 B.S., Western Oregon University  
 Thesis: Research Organizations: How Gender Practices and Experiences Impact Faculty.  
 Major Advisor: Michael Morgan

Amanda Zulas  
 B.S., M.S., Western Illinois University  
 Thesis: Graphically Visualizing Quantitative Smart Home Data.  
 Major Advisor: Lisa Fournier

**SOCIOLOGY**

Joseph Kremer  
 B.A., Western State College of Colorado  
 Thesis: Environmental Sentencing Disparities in the Pacific Northwest 2007-2011: A Story of Equality.  
 Major Advisor: Erik Johnson

**SOIL SCIENCE**

\*Johnbull Dickson  
 B.S., M.S., Ph.D., Moscow State University  
 Thesis: The Role of Secondary Aluminosilicate Minerals in Technetium-99 Immobilization in Radioactive Waste.  
 Major Advisor: James Harsh

Tai Maaz  
 B.S., M.S., University of Hawaii at Manoa  
 Thesis: An Uptake Efficiency, Cycling, and Rotational Balances in Two Agroecological Zones of Eastern WA.  
 Major Advisor: William Pan

**VETERINARY SCIENCE**

Josephine Afema  
 B.V.M., Makerere University  
 M.P.V.M., University of California, Davis  
 Thesis: Salmonella and Antimicrobial Resistance in Humans, Livestock and Wild Birds.  
 Major Advisor: William Sischo

Abirami Kugadas  
 B.V.S., University of Peradeniya  
 M.S., University of Minnesota  
 Thesis: Growth of Mannheimia Haemolytica: Inhibitory Agents and Putative Mechanism of Inhibition.  
 Major Advisor: Subramaniam Srikumaran

Qian Liu  
 B.S., Ocean University of China  
 Thesis: Uncovering a Region in the Nipah Virus Attachment Protein Important for Triggering Membrane Fusion.  
 Major Advisor: Hector Aguilar-Carreno

\*Claire Miller  
 B.S., Washington State University  
 Thesis: Characterization of the Transcriptome and Proteome of a Salmonella Enterica Serotype Typhimurium DNA Adenine Methyltransferase Mutant.  
 Major Advisor: Kevin Lahmers

Lwiindi Mudenda  
 B.A., University of Zambia  
 M.S., University of Queensland  
 Thesis: Identification of Dermacentor Andersoni Saliva Proteins that Modulate Mammalian Phagocyte Function.  
 Major Advisor: Wendy Brown

Artem Rogovskyy  
 D.V.M., Agricultural Academy of Ukraine  
 M.S., Louisiana State University & Agricultural & Mechanical College  
 Thesis: Deciphering Mechanisms of VLSE-Mediated Immune Avoidance by Borrelia burgdorferi.  
 Major Advisor: Troy Bankhead

Carrie Schmidt  
 B.S., The Pennsylvania State University  
 D.V.M., University of Pennsylvania  
 Thesis: Seasonal Variation in Escherichia Coli O157 Infection of Cattle: The Role of Environmental Protozoa.  
 Major Advisor: Thomas Besser

Carla Schubiger  
 D.V.M., University of Berne  
 Thesis: Mechanism of Action of a Probiotic Enterobacter on Flavobacterium psychrophilum.  
 Major Advisor: Douglas Call



**The Graduate School**

*The following candidates will be presented by Dean of the Graduate School William Andrefsky.*

**MASTER IN TEACHING**

- \*Elaine Alvey  
B.A., University of Kentucky
- \*Jamie Anderson  
B.A., Washington State University
- \*Tracy Arredondo  
B.A., American University
- \*Diondra Beck  
B.S., University of Portland
- Barbara Caballero  
B.A., University of Washington
- \*Luke Conley  
B.S., Washington State University
- \*Brittany Curry  
B.S., Washington State University
- \*Leonard Davis  
B.A., Washington State University
- \*Wyndal Espinosa  
B.F.A., University of Kansas
- \*Rochelle Feil Adamowsky  
B.A., University of Washington
- \*Anna Ghirardo  
B.A., Gonzaga University
- \*Brianna Gier  
B.A., Washington State University
- \*Kristine Hawes  
B.S., Washington State University
- \*Steve Kelley  
B.A., Washington State University
- \*Carrie Klotz  
B.A., Washington State University
- \*Chinchu Ko  
B.A., Tamkang University  
B.A., Southern Taiwan University of Technology
- \*Molly Lynch  
B.A., University of Washington
- \*Rachel McClain  
B.A., Washington State University
- Danielle Mosier  
B.A., Washington State University
- \*Alexis Murray  
B.A., Washington State University
- Marie Nemechek  
B.A., Washington State University
- \*Sharon Pickett  
B.A., Brooks Institute of Photography  
B.A., Washington State University
- \*Samuel Pocklington  
B.S., Washington State University
- \*Emma Schmidt  
B.A., Lewis and Clark College and Law School
- \*Susannah Schmidt  
B.S., University of Oregon
- \*Valerie Smith  
B.B.A., University of Dayton
- \*Shawn Stipic  
B.A., Washington State University
- \*Erika Studeman  
B.S., B.S., Washington State University
- \*Thomas Suek  
B.A., Pacific Lutheran University
- \*Tyler Thralls  
B.A., Whitworth University
- \*Cord Tornow  
B.S., Portland State University
- Melisa Walker  
B.A., Washington State University
- \*Breanne Webberley  
B.A., Washington State University
- \*Danica Weiner  
B.S., University of Idaho

**MASTER OF ACCOUNTING**

- Mary Cody  
B.A., Washington State University
- YunSun Kim  
B.B.A., Washington State University
- Yuechiang Luo  
B.A., Ashford University
- Scott Reeves  
B.A., Washington State University
- Wendy Roldan  
B.A., Washington State University
- \*Kim Stewart  
B.A., Washington State University
- \*Dylan Woll  
B.A., Washington State University
- Xiaotian Zhang  
B.A., Washington State University
- MASTER OF ARCHITECTURE**
- Arnold Altuna  
B.A., University of Washington
- Jessica Brewer  
B.S., Washington State University
- Romeo Canada  
B.S., Washington State University
- Heather Field  
B.S., Washington State University
- Gerardo Gonzalez Gomez  
B.A., Heritage University
- Cassandra Lang  
B.S., Washington State University
- \*Byron Martz  
B.S., Washington State University
- \*Eric Reiter  
B.S., Washington State University
- Ryan Rideout  
B.A., University of Washington
- Steve Schmitz  
B.S., Washington State University
- Joshua Thomson  
Bachelor, Unitec Institute of Technology
- \*Austin Tobin  
B.A., Sonoma State University
- MASTER OF BUSINESS ADMINISTRATION**
- \*Sean Akhlaghi  
B.S., Central Washington University
- \*Mohammed Alkhudair  
B.B.A., Al Yamamah University  
M.I.B., Hult International Business School
- Zachary Anderson  
B.A., Washington State University
- \*Valeriy Arakelyan  
B.B.A., University of Washington
- Elizabeth Arnold  
B.A., Washington State University
- \*Ashley Atkins  
B.A., Washington State University
- \*Kalise Ball  
B.B.A., Washington State University
- \*Christopher Best  
B.A., Southeastern Louisiana University  
M.S., Embry-Riddle Aeronautical University
- \*Brady Blankevoort  
B.A., Washington State University
- Brian Booth  
B.S., Portland State University
- Keith Borland  
B.A., University of California, Davis
- \*Dale Bourgeois  
B.S., Washington State University
- Mark Boynton  
B.S., California Polytechnic State University, San Luis Obispo



*Eric Brandon B.S., Washington State University	*Nathan Hungate B.A., Washington State University	*Kacper Mocek B.A., Washington State University	Robert Schwertley B.B.A., Seattle University
*Zachary Brevick B.A., Washington State University	Taggart Jacklin B.S., Tulane University	*Andrew Monroe B.A., Washington State University	*Anthony Sherman B.A., Washington State University
Bryce Burchak B.A., Washington State University	*Brett Jacobs B.A., Washington State University	Adam Morris B.A., Warner Pacific College	*Noelle Song B.A., University of Washington
*Ali Clayton B.S., Western Oregon University	*William Janssen B.S., Central Washington University M.B.A., University of Washington	*James Mundy B.S., Washington State University	*Eric Speiser B.S., Western Governor's University
*Warren Cook B.A., Washington State University	Darrell Johnson B.A., University of Washington	*Christopher Navan B.A., Washington State University	Mckinley Storey B.A., Washington State University
Aaron Copeland B.S., Central Washington University	Jordan Kahn B.S., United States Air Force Academy	*Wade Oswald B.S., Franklin University	*Zuan Sun B.E., M.E., Wuhan University of Science and Technology
*Lisa Copeland B.S., California Polytechnic State University, San Luis Obispo	Taheirah Kalahiki B.A., Saint Martin's University	Elena Palmer B.S., Washington State University M.S., Webster University	*Josiah Thalhoffer B.A., Northwest University
*Meagan Corbett B.A., Washington State University	*Heidi Kim B.S., Washington State University	*Christopher Pettey B.B.A., University of Washington	*Carol Thompson B.A., B.A., Washington State University
Adam Corliss B.S., Virginia Polytechnic Institute & State University	Jan Koal B.A., M.A., Ph.D., Washington State University	*Amber Poe B.A., Washington State University	*Jesse Tuttle B.S., University of Phoenix
Curtis Dabb B.S., Brigham Young University	*Nicholas Kufus B.S., Washington State University	*Svetlana Popov B.B.A., Temple University	*Jiri Vasat B.S., Czech University of Agriculture in Prague
*Steven Day B.A., University of Idaho	*Jessica Linton B.A., Washington State University	Nandani Prasad B.S., California State University, East Bay	*Po-Kan Wang B.A., Washington State University
Lacey Diamond B.S., University of Arizona M.S., Montana State University, Billings	*William Lippl B.A., Washington State University	*Jennifer Price B.S., Frostburg State University M.S., The Pennsylvania State University	Brent Weisel B.S., B.S., Central Washington University
*Joseph Doherty B.A., Washington State University	*Charles Loflin B.S., Eastern Oregon University	*Alex Purcell B.S., Lewis-Clark State College	Jennifer Weldon B.A., Southern Arkansas University M.B.A., Louisiana State University at Shreveport
*Tyler Doxey B.S., Utah Valley University	Michael Lowry B.S., Montana State University, Billings	Melinda Rathjen B.A., Washington State University	*James Wilgus B.A., Washington State University
*Eric Ebbers B.S., Central Washington University	*Darren Markle B.A., Washington State University	*Nicholas Riippa B.S., Embry Riddle Aeronautical University	Gina Zanella B.A., University of Washington
*Casey Filburn B.B.A., University of Alaska Fairbanks	Tara Masters B.S., University of Denver	Jamie Rogers B.A., Washington State University	Chad Zink B.S., Washington State University
John Finken B.B.A., Creighton University	Jonathan Mauro B.S., University of Massachusetts at Amherst	Anthony Santella B.S., M.S., University of Illinois at Urbana- Champaign	<b>MASTER OF BUSINESS ADMINISTRATION (EXECUTIVE)</b>
Travis Godderidge B.S., Utah State University	*David McClellan B.A., Washington State University	Stephen Saslow B.S., University of Phoenix	Fadi Alfayoumi B.A., Jordan University of Science and Technology
Jacob Harding B.S., University of Washington	*Chad Mikels B.A., Washington State University	Mark Schmitz B.B.A., Eastern Washington University	*Keri Andrews B.A., Washington State University

*\*Previously awarded degree*

- \*Kirsten Barard  
B.B.A., American Intercontinental University
- Brent Bradshaw  
B.Tech., British Columbia Institute of Technology
- \*Leroy Bryant  
B.S., Biola University
- \*Brian Buch  
B.S., University of California, Santa Barbara
- \*Ann Marie Butler  
B.S., University of California, Davis  
M.A., San Diego State University
- \*Robert Csonaki  
B.A., Washington State University
- James Davis  
B.S., Oakland University
- \*Keith Forbes  
B.B.A., City University
- \*Cassandra Larson  
B.S., Cornell University
- \*Christopher Longtin  
B.A., M.A., Carleton University
- \*Jyoti Mann  
B.A., Panjab University Bachelor, Whitworth University
- Bonnie Meister  
B.A., University of South Florida
- Larry Moody  
B.S., M.S., University of Illinois at Urbana-Champaign
- \*Daniel Neides  
B.S., Ohio State University
- William Newman  
B.A., Washington State University
- \*Allen Pate  
B.S., George Washington University
- Lisa Young  
B.A., B.S., Central Washington University
- MASTER OF EDUCATION**
- \*Lynn Becerra  
B.A., University of California, Santa Barbara
- Mikayla Brandhorst  
B.A., Washington State University
- \*Shawna Breach  
B.S., University of Idaho
- Jessica Byrne  
B.A., Washington State University
- Jori Cachelin  
B.A., Humboldt State University
- \*Yu-Ju Cheng  
B.A., Tainan University of Technology
- Crystal Clement  
B.A., Eastern Washington University
- Lesley Coker  
B.A., Central Washington University
- \*Mohamed Elhess  
B.A., Garyounis University
- Ruth Fournier  
B.A., Washington State University
- \*Darin Gardner  
B.A., University of Washington
- Rachel Groth  
B.A., Western Washington University
- Lauren Hemenway  
B.S., Pacific University
- \*Sarah Horn  
B.A., University of New Hampshire
- Michelle Jacobs  
B.A., Western Washington University
- Bryce Kennell  
B.A., Eastern Washington University
- Sarah Krowiak  
B.A., Calvin College
- Jacob McKissick  
B.A., B.A., Washington State University
- Efren Mendoza  
B.S., Washington State University
- Megan Miller  
B.A., Eastern Washington University
- \*Sandra Miller  
B.S., Andrews University
- \*Kathleen Ogg  
B.B.A., California State University, Sacramento
- \*Wendy Onermaa  
B.A., Calvin College
- Irina Shaporda  
B.A., Heritage University
- \*Shavon Stadick  
B.S., Central Washington University
- \*Mitchell Swanger  
B.S., University of Idaho
- \*Sasha VanderSchelden  
B.A., Washington State University
- Madison Wheeler  
B.S., College of Charleston
- \*Jamie Wopschall  
B.Ed., Gonzaga University
- \*Qi Zhi  
B.A., Anhui University
- MASTER OF ENGINEERING AND TECHNOLOGY MANAGEMENT**
- Yoni Arrieta  
Ingeniero, Tecnologica de Bolivar
- Jessica Burns  
B.A., Seattle University
- John Gieber  
B.S., University of Wyoming
- Alex Hamblin  
B.S., University of the State of New York Excelsior College
- Landon Heidenreich  
B.B.A., Pacific Lutheran University
- Charles Kahlsdorf  
B.S., New Mexico State University
- John LeGloahec  
B.S., New Mexico State University
- Carla Ann Miller  
B.A., Central Washington University
- James Poindexter  
B.S., Capella University
- Dan Rottler  
B.S., Washington State University
- Preeti Shree  
B.Arch., Birla Institute of Technology  
M.S., University of Northern Virginia
- MASTER OF HEALTH POLICY AND ADMINISTRATION**
- Gary Swan  
B.S., M.B.A., Washington State University
- MASTER OF NURSING**
- Suzanne Anders  
B.S., Washington State University
- \*Lisa Austin  
B.S.N., University of Washington
- Adam Clarno  
B.S., Pacific Lutheran University
- \*Angela Combs  
B.S., Washington State University
- Janna Cortes  
B.S., Linfield College
- Kelle Dragich  
B.S., University of Great Falls
- Kelli Farm  
B.S., Oregon Health Sciences University
- Theresa Gilmore  
B.S., Washington State University
- Kelly Green  
B.S., Oklahoma City University  
B.S., Creighton University  
Ph.D., University of Notre Dame
- Nichol Halverson  
B.S., Grand Canyon University
- \*Annmarie Keck  
B.S., Washington State University

\*Gloria Lem  
B.S.N., University of Washington  
Cheryl Lewis  
B.S., Pacific Lutheran University  
\*Andrew Marges  
B.S., University of Oregon  
B.S.N., Linfield College

Kaye McGehee  
B.S., Washington State University

\*Terisa Sjue-Loring  
B.S., Oregon Health Sciences University

\*Acacia Syring  
B.S., Washington State University

Mary Wells  
B.S.N., Oregon Health Sciences University

\*Bobbi Woodward  
B.S., Washington State University

**MASTER OF PUBLIC AFFAIRS**

Morgan Parker  
B.A., B.A., Washington State University

**MASTER OF ARTS IN ANTHROPOLOGY**

Rodrigo Emmanuel De Los Santos Alamilla  
Titulo, Autonomous University of Yucatan

Zachary Garfield  
B.A., University of Nebraska-Lincoln

Justin Hopt  
B.A., Oregon State University

Matthew Marino  
B.A., University of Florida

William Nanavati  
B.S., Southern Methodist University

Kristen Syme  
B.A., University of Delaware

**MASTER OF ARTS IN APPLIED ECONOMICS**

Kyung Lim  
B.B.A., Kyungpook National University

**MASTER OF ARTS IN COMMUNICATION**

\*Sung-gyu Hong  
B.A., Hanyang University

Kyle Lorenzano  
B.S., Arizona State University

\*Zhiming Xu  
B.A., M.A., Tianjin Normal University

**MASTER OF ARTS IN CRIMINAL JUSTICE**

Wendy Koslicki  
B.A., Washington State University

Wesley McCann  
B.A., Washington State University

Tiffany Osborn  
B.A., Eastern Washington University

**MASTER OF ARTS IN EDUCATION**

Carlos Anguiano  
B.A., California State University, Los Angeles

Mattie Buckmiller  
B.S., Washington State University

\*Ahmed Jebril  
B.A., Garyounis University

\*David Lose  
B.S., Oregon State University

Kara Melton  
B.A., Whitworth University

Elizabeth Schriener  
B.A., Eastern Washington University

**MASTER OF ARTS IN HISTORY**

\*Robert Franklin  
B.A., University of Hawaii at Hilo

**MASTER OF ARTS IN INTERIOR DESIGN**

\*Marissa Cool  
B.A., Western Washington University

\*Shannon Coughlin  
B.F.A., Southern Utah University

**MASTER OF ARTS IN MUSIC**

Rodrigo Cortes  
B.A., California State University, East Bay

**MASTER OF ARTS IN POLITICAL SCIENCE**

Francis Benjamin  
B.S., University of Idaho

\*Michael Kimmell  
B.A., Central Washington University

Justin Smith  
B.A., B.A., University of Utah

**MASTER OF ARTS IN PREVENTION SCIENCES**

Benjamin Bayly  
B.S., University of Idaho

Alexa Carr  
B.S., Washington State University

Jaimie Jeffords  
B.A., Arizona State University

Stephanie Roeter  
B.A., Washington State University

**MASTER OF ARTS IN SOCIOLOGY**

Elyse Bean  
B.S., Utah State University

Jordan Rinehart  
B.A., West Virginia University

Lauren Scott  
B.A., Colorado State University

**MASTER OF ARTS IN SPEECH AND HEARING SCIENCES**

\*Desiree Arnim  
B.A., Central Washington University

Elizabeth Boorujy  
B.A., Washington State University

**MASTER OF ARTS IN STRATEGIC COMMUNICATION**

Nicole Bullock  
B.A., Washington State University

Madison Kozacek-Hantho  
B.A., Washington State University

**MASTER OF SCIENCE IN AGRICULTURE**

\*Fangliang Carpenter  
B.S., North Dakota State University

Dinesh Uduwana  
B.S., University of Peradeniya

**MASTER OF SCIENCE IN ANIMAL SCIENCES**

\*Benjamin Enger  
B.S., University of Idaho

**MASTER OF SCIENCE IN APPLIED ECONOMICS**

Francis Addai  
B.A., University of Science and Technology

\*Kuan-Ming Huang  
B.A., Washington State University

Pitchayaporn Tantihkarnchana  
B.A., Chulalongkorn University

**MASTER OF SCIENCE IN BIOLOGICAL AND AGRICULTURAL ENGINEERING**

\*Odgerel Bumandalai  
B.S., Sardar Vallabhbhai Patel University Agriculture & Technology  
B.S., Mongolian National University

Charles Degan  
B.S., Washington State University

Aleana Gongal  
B.E., Tribhuvan University

Tianyan Guo  
B.E., Zhejiang University of Science and Technology

Yuxiao Xie  
B.S., Shenzhen University

**MASTER OF SCIENCE IN BIOLOGY**

Jennifer Martin  
B.S., Montana State University, Bozeman

**MASTER OF SCIENCE IN BOTANY**

\*John Bills  
B.S., University of Tennessee at Knoxville

Nathaniel Frein  
B.S., University of Southern Maine

Ashlyn Wedde  
B.S., University of Florida

**MASTER OF SCIENCE IN CHEMICAL ENGINEERING**

\*Benjamin Garrett  
B.S., Washington State University

Abid Tanzil  
B.S., Bangladesh University of Engineering & Technology

**MASTER OF SCIENCE IN CHEMISTRY**

\*Cherilynn Boele  
B.S., Lewis University

Brandan Cook  
B.S., University of Washington

Kayte Denslow  
B.S., Washington State University

\*Deborah Malamen  
B.S., Simmons College

\*Harry Taylor  
B.S., Tennessee Technological University

**MASTER OF SCIENCE IN CIVIL ENGINEERING**

\*David Aguilera  
B.S., Washington State University

Colin Anyan  
B.S., Washington State University

\*Shifa Dinesh  
B.Tech., Kerala Agricultural University  
M.Tech., Indian Institute of Technology, Kharagpur

Gabriel Dowell  
B.S., Washington State University

Erica Iverson  
B.S., University of Idaho

Peter Jacobs  
B.S., California State University, Chico

James LaFave  
B.S., Washington State University

\*Gary Martindale  
B.S., Washington State University

Charlie Misner  
B.S., Washington State University

Michael Robert  
B.S., Washington State University

Ibrahim Shamia  
B.E., Garyounis University

\*Haishan Wu  
B.S., University of Washington

**MASTER OF SCIENCE IN COMPUTER SCIENCE**

David Anderson  
B.S., Washington State University

Salikh Bagaveyev  
B.A., B.S., B.S., University of Washington

Joseph Chapman  
B.A., University of Texas-Austin  
M.A., Florida State University

Christian Holton  
B.S., Washington State University

Evan Olds  
B.S., Washington State University

\*Luis Oleas Chavez  
Titulo, Escuela Politecnica del Ejercito

**MASTER OF SCIENCE IN COORDINATED PROGRAMS IN DIETETICS, NUTRITION, AND EXERCISE PHYSIOLOGY**

\*Kelli Alford  
B.S., Washington State University

\*Robert Baerman  
B.S., Washington State University

\*Angela Boyd  
B.S., Washington State University

Cynthia Cash  
B.S., Washington State University

\*Liana Castilla  
B.S., Washington State University

Marilyn Cellucci  
B.S., Washington State University

Jeannette Gomez  
B.S., Eastern Washington University

\*Jesse Hall  
B.S., Washington State University

\*Kristina Jadrich  
B.S., Washington State University

\*Kelsey Kommes  
B.S., Washington State University

\*Lynnsee Moberg  
B.S., Washington State University

\*Kelsey Schroeder  
B.A., University of Colorado at Boulder

\*Susan Wardrop Ells  
B.A., Eastern Washington University  
B.S., Washington State University

\*Scot Webb  
B.A., B.S., Washington State University

\*Lindsey Woodkey  
B.S., Central Washington University

\*Joanna Yonago  
B.A., Eastern Washington University

**MASTER OF SCIENCE IN CROP SCIENCE**

Benjamin Brimlow  
B.S., Washington State University

Paul Froese  
B.S., Washington State University

Oritsesaninormi Oraguzie  
B.S., University of Ibadan

\*Hannah Walters  
B.S., Colorado State University

**MASTER OF SCIENCE IN ELECTRICAL ENGINEERING**

\*Rahul Anilkumar  
B.E., Visveswaraiiah Technological University

Kelvin Bidwell  
B.E., Walla Walla University

Yu Guo  
B.E., Nanjing Institute of Technology

\*Jiayi Jiang  
B.S., Washington State University

Fransiska Martina  
B.E., Institut Teknologi Bandung

Benjamin Edward Nappoly  
B.E., Anna University

Pramila Nirbhavane  
B.E., University of Mumbai

\*Jayminkumar Pancholi  
B.E., Gujarat University

\*Justin Valdez  
B.S., Washington State University

Jie Wei  
B.E., University of Strathclyde

\*Qiang Zhang  
B.S., Xian University of Science & Technology  
M.S., Xian Jiaotong University

**MASTER OF SCIENCE IN ENGINEERING**

Paul Gamble  
B.S., California State University, Monterey Bay

YiPeng Zhou  
B.E., Beijing Institute of Petrochemical Technology

**MASTER OF SCIENCE IN ENTOMOLOGY**

Si-Pei Liu  
B.Ag., M.Ag., China Agricultural University

Jason Long  
B.S., University of Hawaii at Hilo



**MASTER OF SCIENCE IN ENVIRONMENTAL ENGINEERING**

Yasir Abduljaleel  
B.S., Al-Mustaniriya University

Wael Alrikabi  
B.S., Al-Mustansiria University

\*Brian Beleau  
B.S., Washington State University

Samuel Cartmell  
B.A., Carroll College

Ryan Griggs  
B.S., Washington State University

\*Erfanul Huq  
B.S., Bangladesh University of Engineering & Technology

Syeed Md Iskander  
B.S., Bangladesh University of Engineering & Technology

Md Rubayet Mortuza  
B.S., Bangladesh University of Engineering & Technology

Gayatri Yadavalli  
B.E., Universteit Van Pretoria

**MASTER OF SCIENCE IN ENVIRONMENTAL SCIENCE**

Molly Bogeberg  
B.S., Loyola Marymount University

Allison Clark  
B.S., Washington State University

\*Eric Dexter  
B.S., Portland State University

\*Brian Koepke  
B.S., Washington State University

Ronnie Mabry  
B.S., University of The State of New York Excelsior College  
M.B.A., City University

Cody Miller  
B.S., University of Rhode Island

\*James Moore  
B.S., Washington State University

\*Joseph Pitkin  
B.A., Utah State University  
M.A., New Mexico State University

\*Juan Yao  
Bachelor, Anhui Medical University

**MASTER OF SCIENCE IN FOOD SCIENCE**

Rocio Jackelyn Carrion Rabanal  
Bachiller, Universidad Nacional de Cajamarca

\*Chen Liu  
B.E., East China University of Science and Technology

\*Trent Millin  
B.S., Whitworth University

**MASTER OF SCIENCE IN GEOLOGY**

Rachael Hoover  
B.A., University of Colorado at Boulder

Ryan McKinley  
B.S., Washington State University

Jennifer Staffenberg  
B.S., University of Florida

**MASTER OF SCIENCE IN HORTICULTURE**

Suzanne Niemann  
B.S., Washington State University

**MASTER OF SCIENCE IN LANDSCAPE ARCHITECTURE**

Patrick Grecu  
B.S., Purdue University

**MASTER OF SCIENCE IN MATERIALS SCIENCE AND ENGINEERING**

Kale Harrison  
B.S., Clarkson University

\*Yang Li  
B.E., Southwest Jiaotong University

Yuanyuan Liu  
B.E., Wuhan University of Technology

Chad Nixon  
B.S., Washington State University

\*Alexander Plonczak  
B.S., New Mexico Institute of Mining and Technology

Peiyu Tan  
B.E., Central South University of Technology

\*Wenrui Yang  
B.E., Shenyang Jianzhu University

**MASTER OF SCIENCE IN MATHEMATICS**

Hossein Noorazar  
B.S., University of Tabriz

\*Spencer Payton  
B.S., Washington State University

\*Christopher Ward  
B.S., Saint Martin's University

**MASTER OF SCIENCE IN MECHANICAL ENGINEERING**

Aditya Bagade  
B.S., B.S., Washington State University

Shenel Bankston  
B.S., California State University, Los Angeles

\*Zhibang Chen  
B.E., Jilin University

\*Peter Damstedt  
B.E., Utah State University

\*Anirudh Deshpande  
Bachelor, Birla Institute of Technology

\*Varun Gupta  
B.Tech., Punjab Technical University

Carolyn John  
B.S., Oregon State University

\*Preetam Mohapatra  
B.Tech., Indian School of Mines

\*Joshua Snyder  
B.S., Washington State University

Johnny Ung  
B.S., Washington State University

**MASTER OF SCIENCE IN PHYSICS**

Steven Cornthwaite  
B.S., University of Maryland Baltimore County

Mohammad Khomehchi  
B.S., K.N. Toosi University of Technology  
M.S., University of Tehran

Joseph Lanska  
B.S., University of Wisconsin-Lacrosse

\*Ryan Magee  
B.S., Duke University

**MASTER OF SCIENCE IN PLANT PATHOLOGY**

\*Charles Christianson  
B.S., Washington State University

Elizabeth Kramer  
B.S., University of Washington

Sean McCotter  
B.A., University of Puget Sound

Lucy Rollins  
B.S., University of Washington

\*Chongjing Xia  
B.S., Northwest A & F University

**MASTER OF SCIENCE IN PSYCHOLOGY**

Anthony Berger  
B.S., Arizona State University

Sydney Iverson  
B.S., University of Washington

\*Cody Rosasco  
B.A., California State University, Monterey Bay

\*Cristina Wilson  
B.S., Pacific University



**MASTER OF SCIENCE IN  
SOIL SCIENCE**

- \*Margaret McCoy  
B.S., Wilmington College
- \*Jason Morrow  
B.S., University of  
Wyoming
- Jessica Mullane  
B.S., University of  
California, Davis

**MASTER OF SCIENCE IN  
SPEECH AND HEARING  
SCIENCES**

- Ming-Yeh Hsieh  
B.S., I-Shou University

**MASTER OF SCIENCE IN  
STATISTICS**

- \*Andrew Allen  
B.S., Washington State  
University
- Jung Lee  
B.A., University of  
California, Santa Cruz
- Xiaoming Wen  
B.E., Central South  
Forestry University  
M.E., Chinese Forestry  
Academy  
M.S., Washington State  
University

**MASTER OF SCIENCE IN  
VETERINARY SCIENCE**

- \*Sara Ahmed  
Bachelor, Minia University
- \*Kevin Choy  
D.V.M., University of  
Melbourne  
B.S., University of British  
Columbia
- \*Ana Costa  
D.V.M., Escola  
Universitaria Vasco Da  
Gama
- Mustafa Elarbi  
B.S., Al-Fateh University
- \*Daniel Krull  
B.S., Mississippi State  
University
- \*John Lutter  
B.S., South Dakota State  
University  
D.V.M., Kansas State  
University

- \*Moses Mamasita  
D.V.M., Sokoine University  
of Agriculture

- Kelly Sears  
B.A., Mount Holyoke  
College  
D.V.M., University of  
Florida

- \*Eduardo Vallejo Esquerria  
D.V.M., Universidad  
Autonoma de Queretaro

**MASTER OF SCIENCE IN  
ZOOLOGY**

- Kathryn Holden  
B.S., University of Idaho
- \*Janae Mosely  
B.S., Washington State  
University
- \*Rachel Wirgau  
B.S., Washington State  
University



\*Previously awarded degree

**The Graduate School**

*The following candidates will be presented by Dean of the Graduate School William Andrefsky.*

**GRADUATE CERTIFICATE IN CONSTRAINTS MANAGEMENT**

Jarvis Morrison  
B.S., Alabama Agricultural and Mechanical University

Jimmy Nguyen  
B.E., University of Washington

Alessandro Nocivelli  
B.S., Politecnico Di Milano  
B.S., Ecole Superieure D'Electricite

Preety Shree  
B.Arch., Birla Institute of Technology  
M.S., University of Northern Virginia

\*Anthony Taylor  
B.S., Washington State University

Phoebe Vu  
B.S., University of Washington

**GRADUATE CERTIFICATE IN MANUFACTURING LEADERSHIP**

Ashish Limbasia  
B.S., Washington State University

Carla Ann Miller  
B.A., Central Washington University

Jarvis Morrison  
B.S., Alabama Agricultural and Mechanical University

Johnstonne Njuguna  
B.S., Washington State University

**GRADUATE CERTIFICATE IN PROJECT MANAGEMENT**

Mohammed Babiker  
B.S., Sudan University of Science and Technology

Paul Bishop  
B.S., Embry Riddle Aeronautical University

Katherine Gideon  
B.A., Washington State University

Alex Hamblin  
B.S., University of The State of New York  
Excelsior College

Charles Kahlsdorf  
B.S., New Mexico State University

John LeGloahec  
B.S., New Mexico State University

Preety Shree  
B.Arch., Birla Institute of Technology  
M.S., University of Northern Virginia

Caleb Summerfelt  
B.S., M.Arch., Washington State University

**GRADUATE CERTIFICATE IN PROTEIN BIOTECHNOLOGY**

\*Tyson Eucker  
B.S., Brigham Young University

Abigail Green  
B.S., University of Texas-Tyler

Timothy Harrington  
B.S., University of California, San Diego  
M.S., University of California, Irvine

\*Benjamin Kasten  
B.S., Missouri Baptist University

**GRADUATE CERTIFICATE IN PSYCHIATRIC MENTAL NURSE PRACTITIONER**

Karla Marvich  
B.S., M.Nurs., University of Portland

**GRADUATE CERTIFICATE IN SIX SIGMA QUALITY MANAGEMENT**

Ashish Limbasia  
B.S., Washington State University

Johnstonne Njuguna  
B.S., Washington State University

**GRADUATE CERTIFICATE IN SYSTEMS ENGINEERING MANAGEMENT**

Rene Kousari  
B.S., Arizona State University

Sean Lickfold  
B.A., Heritage University

# Candidates for Professional Degrees

## College of Pharmacy

---

### DOCTOR OF PHARMACY

Erna G. Agmata

Doan Nguyen Grudzien

Saad Howlader

\*Mealeatey Pel

David Vu Tran

\*Anthony Truong

*\*Previously awarded degree*



# Candidates for Baccalaureate Degrees



Names in the Fall 2014 Commencement Program include August 2014 degree candidates and December 2014 degree candidates who met the application deadline.

The program is not a listing of those attending the ceremony. Names of May 2015 degree candidates will appear in the spring program.



## College of Agricultural, Human, and Natural Resource Sciences

### BACHELOR OF SCIENCE IN AGRICULTURAL FOOD SYSTEMS

\*James Bernard Casey  
Brandon Christopher Coake  
Jennifer Renee Crane  
\*Joshua Benjamin Duncan  
Andrew Gary Grillo  
\*Austin James Oberlin LeSure  
Jacob Robert Lundstrom  
\*Paul T. Mathis  
Amanda Michelle Mattingly  
Douglas John Moore  
Jesse Brent Naylor  
—*Magna Cum Laude*  
Daniel Bernard Patnode  
Moah Son  
Sierra Maria Swansen  
Katherine Ann Vetter  
Scott Arthur Weisse  
Travis Loyd Wisse  
—*Cum Laude*

### BACHELOR OF SCIENCE IN ANIMAL SCIENCES

Amanda Rose Amore  
—*Cum Laude*  
\*Bridget Elizabeth Barry  
—*Magna Cum Laude*  
\*Bonnie Ann Cantrell  
\*Abbey Lyn Fix  
Elizabeth Ann Grinde  
Sarita Renee Harris  
Kayla Allison Hough  
Brooke Nicole Lillengreen  
Benjamin Howard Lord  
Olivia Char Lottes  
—*Magna Cum Laude*  
Alyssa Michelle Marre  
Ceara Jesaine Maxwell  
Kelsey Dawn Moss  
Jacob Levi Mutch  
—*Magna Cum Laude*  
Allison Jean North  
\*Janine Parker  
\*Heather Jamee Phillips  
Sital Trishangly Prasad  
Jordyn Reimer  
Darian Francesca Rentas

\*Previously awarded degree

Brooke Lianna Schoenbachler  
Hannah Elizabeth Symonds  
Julie Ann Vanleemput  
Jaclyn Jean Vincent

### BACHELOR OF ARTS IN APPAREL, MERCHANDISING, AND TEXTILES

\*Janett Unyoung Auh  
—*Magna Cum Laude*  
Kerby Bailey Beckman  
Lauren Victoria Best  
Melanie Kathleen Bibko  
\*Chelsea Louise Elizabeth  
Boulton  
—*Cum Laude*  
Sherese Nicole Hooper  
Nicole Lynne Ingram  
Emma Drew Johnson  
—*Magna Cum Laude*  
\*Mackenzie Anne Johnson  
Christal Noelle Judge  
\*Seong-Min Kang  
\*Amy Lynn Leonard  
\*Eva Johanna Lindstrom  
\*Aiting Lu  
Kaila Elizabeth Manthei  
\*Chelsea Anne McLean  
\*Chelsea Aleesha Moorhead  
—*Cum Laude*  
\*Trini Leigh Nixon  
Haily K. Ruchert  
\*Stephanie Lyn Ruygrok  
—*Summa Cum Laude*  
Kathryn Anne Snyder  
\*Xiaojun Su  
\*Madison Jane Syltebo  
Jessica Nicole Vachon  
Lauren Michelle Watts  
Sydney R. Welch  
\*Tami Wier  
Meili Wu  
\*Yiwei Xu  
\*Yiqing Zhang  
—*Cum Laude*  
Abigail Nicole Ziegler

### BACHELOR OF SCIENCE IN ECONOMIC SCIENCES

Erika Leeann Briscoe  
Nicholas Charles Colby  
—*Magna Cum Laude*  
Daniel Jay Conner  
Taylor Breanne Deruwe  
Safiya Abdulahi Farah  
Andis Kristaps Grinbergs  
\*Taylor Roger Maurice  
Hudson  
Michael Terrance Jackson  
\*Nathan Alexander Johnson  
—*Cum Laude*  
Miranda Nichole Jones  
—*Cum Laude*  
Kone Adjaratou Katembo  
Chin Hwi Kim  
Matthew Ryan Krochmalny  
Jingwei Ma  
Angad Singh Mahal  
James Michael McIntosh  
Shea McKeon  
Jacob Kyle-Anthony  
Meachum  
Cody Christopher Nelson  
Luke Thomas Nelson  
Ben Todd Rathbone  
\*Michael William Rattray  
—*Cum Laude*  
Ryan Matthew Rea  
\*Osakwe Hakeem Rogers  
Sam Brett Russell  
Qianqian Shi  
Ashley Marie Sillivan  
Jason Orion Sullivan  
Yaxin Wang  
\*Zhentao Zhao  
  
**BACHELOR OF SCIENCE IN  
FOOD SCIENCE**  
Lorna Elizabeth Jeffers  
Chaese Michael Sewell  
  
**BACHELOR OF ARTS IN  
HUMAN DEVELOPMENT**  
\*Aimee Shea Alford  
\*Nicole Bianca Atkinson  
\*Denna Marie Balcom

\*Mary Teresa Barnett  
\*Melody Deeanne Bartlett  
\*Gina Michelle Brasuell  
\*Kyna Lynn Brewer  
—*Cum Laude*  
Kristina Leighann Carbis  
Andrew Joseph Chamberlin  
\*Samantha Joy Chandler  
\*Ashleigh L. Cheslek  
Julia Anne Christofferson  
—*Magna Cum Laude*  
\*Kimberly Clark  
Caytee Brianne Cline  
Ashley Ann Collins  
—*Cum Laude*  
Kelsey Virginia Ilene Condon  
—*Summa Cum Laude*  
Kasandra Marie Covey  
—*Cum Laude*  
\*Chelaina Renee Crews  
\*Marissa Leigh Davis  
\*Sasha Tyne Davison  
\*Hannah Aidan DeVos  
Alyson Dyer  
Maria Michelle Echeverria  
\*Camille Renee Farris  
—*Magna Cum Laude*  
Trisha M. Garvey  
\*Angela Michele Gaviglio  
\*Clara Jayne Gildemann  
—*Cum Laude*  
\*Abel W. Girma  
\*Danette Marie Goree  
—*Cum Laude*  
Taylor E. Grizzle  
Alfredo Lee Guzman  
—*Cum Laude*  
\*Jessica Jean Haskins  
Rebecca Aileen Hatley  
\*Kelsey Amanda Henderson-  
Wasmund  
\*Hannah Marie Hinman  
Ashana Faughn Hitchens  
\*Kelsey Lynn Hitchings  
\*Anna Lea Hoot  
—*Cum Laude*  
Brandon Michael Johnson  
Chalee Marie Johnson



\*Emily Rose Johnson  
—*Magna Cum Laude*

\*Kevin John Ketcham  
—*Magna Cum Laude*

Kari Alethe Kinmark

Kayli Marie Kohlrus

Molly Johanna Kuntz  
—*Summa Cum Laude*

\*Carley Faye Lemonds

Amy M. Lente

\*Hayley Mackenzie McGinty

\*Anna Leigh McJunkin

Alisha Elaine Meade

Heidi Linnea Modin  
—*Magna Cum Laude*

Alyssa Hope Moore

Christine Marie Moore

Paige Alayne Moravec

\*Gabriela Navarro

\*Sarah Marie Nelson

Holly J. Nosler

\*Kenya Olivera

Kendra Kaye Peterson  
—*Cum Laude*

\*Carrie L. Ping

Erin K. Ratliff

Leander Allen Raymont

Jordan McKinzie Rennaker

Ruby Elizabeth Roberts  
—*Summa Cum Laude*

\*Lychelle Danae Roberts-  
Kirby

Brooke Ann Schmelebeck

\*Natalie Rose Schnieder

\*Blair Elizabeth Slater

\*Julie Marie Sliger

Kalen Dail Smith

Katelyn Christine Smith

\*Meghan Lee Spears

Huzail Ssematiko Ssemakula

\*Marisa Kay Stoick

\*Kylee Lynn Strunks

Ashley Lorraine Sweatland

Grace Sara Alice Verlie El  
Tolby

Sami Jo Tomes

\*Kathryn Margaret Turney

Jordan Nicole Tyler

\*Jaymie Lynne Vandagriff  
—*Magna Cum Laude*

Carina Viveros

\*Olivia Lauren Wesser

\*Royce Woolridge

\*ZiYing Xu

\*Selamawit Wondimu Yadetta  
Mengyun Zeng

\*Jiao Zhang

Xu Zhang  
—*Cum Laude*

**BACHELOR OF SCIENCE IN  
INTEGRATED PLANT  
SCIENCES**

Roxann Sharleen Austin  
—*Magna Cum Laude*

Sean Mitchell Beale

Thomas Nissen Cagle  
—*Magna Cum Laude*

Leonard D. Hagg II

Jakob Charles Hammer

Clinton L. Hepper

John David Hockersmith

Michael Raymond Hummel-  
Hansen

Genevieve Flores Kalaw

Benjamin Ray Kauffman

Kevin Jerry Kenoyer  
—*Cum Laude*

Helena Konstacky

\*Ashley Rebecca Quimby

\*John Brinker Ramos

Kirsten P. Stubbs

Nick Mark Vincent  
—*Cum Laude*

Leslie Donald Walker

Karissa Michiko Wood

**BACHELOR OF ARTS IN  
INTERIOR DESIGN**

Erin Rose Hersch

Emily Elizabeth Spillar  
—*Magna Cum Laude*

**BACHELOR OF LANDSCAPE  
ARCHITECTURE**

Allen John Roberto Babauta

Johnathan M. Dingman

**BACHELOR OF SCIENCE IN  
NATURAL RESOURCE  
SCIENCES**

\*Alexandra M. Biswas

Bryana Elizabeth Cope

Ryan Michael Crane

Alexa Marie Edwards

\*Michael Richard Hallanger

Benjamin Miles Hartmann

Iver Thorin Hull  
—*Cum Laude*

Austin Rainier Jasienski

Thomas Frederic Koenig  
—*Cum Laude*

Bradley William Riehle

Jena Yasue Saito

\*Arthur Edward Scully  
—*Magna Cum Laude*

Payson Samuel Stultz

\*Lauren Michele Waldorf  
—*Summa Cum Laude*

**College of Arts and Sciences**

**BACHELOR OF ARTS IN  
ANTHROPOLOGY**

\*Marissa Ann Appleton  
—*Magna Cum Laude*

Wyatt Russell Bragg

Rachel Marie Casey

\*Kristina Loirrane Coe

Sebastian Wilhelmus De Bont

Matthew Fitzpatrick Delong

Cody James Graves

\*Jenna Ione Hockett

Kimberly Ann Hopkins

David Lee Kessler

Maria Margareta Kidder  
—*Cum Laude*

\*Hiroyuki Kodaka

Ian Kyle McMahon

Natasha Rose Miller

Gina Chantel Piehl

\*Jordyn Danae Robertson

Nicholas Anthony Van  
Cleave

Charles Erik Von Reis-Iglesias

Alexa Earlene Williams  
—*Magna Cum Laude*

\*Max Robert Wright  
—*Cum Laude*

**BACHELOR OF SCIENCE IN  
BIOLOGY**

\*Alexis Rose Alvarez

\*Brian Robert Bachmann

Eunice Johanna Baciuc

Michael Miller Benjamin

\*Lea Tasha Blanton

Christina Marie Cameron

\*Jonathan Alec Casebier  
—*Magna Cum Laude*

\*Yichen Chien

Mitchell Bradley Croft

\*Abigail Rae Estep

Cameron Michael Finnely

Sarah Marie Fondaw

\*Michael Mitsuo Fujimoto

Katelyn Judith Fulton  
—*Summa Cum Laude*

\*Cameron James Hall

Kirsti Anne Harestad

\*Laurann Louise Heath

Julie Trang Ho

Jens Petter Holt-Jensen

Elizabeth Yamei Houser

\*Kaylee Elyse Huie

\*Kyu Ho Jeong

Tanya I. Kharus

\*Amanda Lynn Kidd

Maria Margareta Kidder  
—*Cum Laude*

Paul Joseph Lutgen  
—*Cum Laude*

Kobe P. Ma

Heather R. Mayer

\*Jared Graham McEntire

Tayfun Nesa Mithu

\*Lejla Mlivic

Anjelica Maria Cervantes  
Moreno

Dmitriy D. Mudryy Jr.

Mallory Elsie Nagel  
—*Magna Cum Laude*

\*Pavlo A. Nesterenko  
—*Magna Cum Laude*

\*Ngan Thithao Nguyen

Tony Toan Nguyen

Kyle Gregory Olsen

\*Taylor Britney Parker

Raef Ross Pedersen

\*Kristina Khouansiva Pravisay

Nichole Marie Pritchett

Jennifer Karin Riley

\*Steven William Ross

Rebecca Michelle Rostad  
—*Magna Cum Laude*

Mariah Cristine Smith  
—*Cum Laude*

William R. Spain

\*Tonya Lynn Strube

Reid B. Syverson

Jonna Linn Taylor

Kenji Leon Thompson

\*John Tan Tieu

Emily Uhlig

\*Andrea Noel Vizcaino

Alexander Hoang Vo

\*George Wang

\*Mark William Wantaja

\*Elizabeth Whitney

Tia M. Williams

Nicholas William Wiseman

\*Max Robert Wright  
—*Cum Laude*

\*Alexander Stanley Robert  
Young

**BACHELOR OF SCIENCE IN  
CHEMISTRY**

Andrew Lloyd Arndt  
—*Summa Cum Laude*

Robert G. Bruton  
—*Cum Laude*

Lance M. Keithley

**BACHELOR OF ARTS IN  
COMPARATIVE ETHNIC  
STUDIES**

Enrique Hernandez

\*Vhonda Marie McElroy

Justin Raymond Oba

\*Maria Cristina Saucedo

\*Kyle Austin Smith

Raul Torres

**BACHELOR OF ARTS IN  
CRIMINAL JUSTICE**

\*Meghan Melinda Antoni

Cristian Giovanni Barajas

Myranda Paige Bell

\*Jacob Keith Berry

\*Paige Lynn Brady  
—*Cum Laude*

Donald Joseph Clark

Tracy Clark

\*Robert Charles Cook

\*Ryan Scott Crone

Jeffrey Tyler Duke  
—*Cum Laude*

\*Esequiel James Espinoza-  
Baxter

Shane Christopher Flesher

Mireya Garcia  
—*Magna Cum Laude*

Adam Robert Gates

Robert Lee Graham

Carrie Lynn Grove

\*Kevin Lee Hanson

Ben Scott Harris

Jaicee Elizabeth Harris

\*Alecia Katherine Hauck

\*Damien Lewis Hicks

Ian Huri

\*Brett Donald Imsland

Leilani Caroline Jones

Chi Won Kang  
—*Summa Cum Laude*

Sean Ji Hoon Kim

Emily M. Kirk

\*James David Leckenby

\*Shaquana Antoinette Logan

Jennifer L. Luther

\*Ryan Steve Martin

Lucero Martinez

Marcus Alan Mason

\*Jonathan Charles McBride

Braden Jerome Messer

Stacy Aurora Moate  
—*Cum Laude*

Danyette Themeshia Murphy

Marshal Jac Nelson  
—*Magna Cum Laude*

Joshua Matthew Nyman  
—*Cum Laude*

Sean Michael O'Neill

Steven Micheal Orme

\*Maria Guadalupe Orozco

Lois Elaine Pacheco  
—*Magna Cum Laude*

Erica Lynn Parkin  
—*Magna Cum Laude*

\*Josue A. Perez-Silva

Jennifer Marie Perret  
—*Cum Laude*

Jacob Abraham Phillips

Jordan Taylor Phillips

Aaron Pruneda

Nicholas Scott Donald  
Ratkowski

\*Michaela Reeder

Clayton John Rennie

Jeffery Brian Rhubottom Jr.

Tanya Rae Risley  
—*Cum Laude*

\*Jordyn Danae Robertson

Trent C. Rodgers

Lea Rouhani

\*Maria Cristina Saucedo

\*Robert Vincent Schultz

Jacob W. Sealby

Lucas W. Sealby

\*Callie Marie Segraves  
—*Magna Cum Laude*

Lanny B. Soto

\*Steven Robert Southworth

Lauren Renee Stephan

\*Brooks Michael Strong

Jacob Matthew Tansy  
—*Cum Laude*

\*Sherrill K. Tedder

\*Benjamin Michael Travis  
—*Cum Laude*

\*Carmen Lyn Truesdale

Vallery Jean Wilson

\*Carl Winston

\*Amanda Nicole Winters  
—*Magna Cum Laude*

Simon K. Yang

**BACHELOR OF ARTS IN  
DIGITAL TECHNOLOGY  
AND CULTURE**

Kevin Curtiss Athey

Alexandra Nicole Backous  
—*Summa Cum Laude*

\*Timothy Brubaker

Russ Robert Burkland

\*Melissa D. Carroll  
—*Cum Laude*

Ashley Marie Castino

\*Chen Chen  
—*Cum Laude*

\*Chunmoon Cho

Christine Lorraine Connors

Adam Mark Denny  
—*Summa Cum Laude*

Patrick Allan Dunn

Lori Ann Ehls

Christopher Scott Ellis

\*Katherine Michelle Fennelly

\*Jocelyn Marie Giles

Rene Gomez

\*Rebecca Diane Granberg  
—*Cum Laude*

\*Amy Marie Hassett

Daniel Stewart Jacobs

Mychael C. Jones

Joshua Serey Kim

\*Lake Randall Konopaski

Vladlena Aleksandravna  
Kushnir

Alison Whalen Lai

\*Angela Leilani Leach

Chi Wai Lei  
—*Summa Cum Laude*

Elise Blanche Martin

Colin Miletich

Crystal Marie Millard

\*Alexander Hawke  
Montgomery  
Daren Ryan Moriarty  
Angela C. Morrelli  
\*George J. Olson  
Stephen Palermini  
—*Magna Cum Laude*  
Travis Christian Petersen  
\*Pauline Gabrielle Ramos  
Joaquin Yanick Robert  
\*Vanessa Morgan Robinson  
—*Magna Cum Laude*  
Autumn Louise Sailer  
Jessica Cecile Schloss  
—*Magna Cum Laude*  
Lina Savanh Sien  
\*Allie Anne Stephens  
\*Devin Michael Stone  
Randall James Theil  
Josh Edward Thomas  
\*Ruby Malia Thompson  
Sheng-You Tsai  
Melissa Marie Tsitsis  
Alicia J. Uhacz  
—*Cum Laude*  
Amalia Rachela Vacca  
—*Magna Cum Laude*  
Timothy Isaac White Jr.  
Brittany Myra Wouden  
—*Cum Laude*

**BACHELOR OF ARTS IN ENGLISH**

Nathan Samuel Acero  
Jovan V. Adams  
Corey Burton Bennett  
\*Emily Catherine Boquet  
Andrew David Braddock  
Jennifer L. Coleman  
Alana Rae Crisostomo  
Melissa Lynn Davis  
\*Gage Paul Digiovanni  
\*Sadie Jane Gaddis  
\*Kristina Gonzalez  
—*Magna Cum Laude*  
Laurel Helen Gordon  
—*Magna Cum Laude*  
Laurel Frances Gray  
\*McKenna Marie Herron  
\*Keri Nicole Hinkle

\*Lauren Elizabeth Jerde  
Brittany Nicole Kealy  
—*Cum Laude*  
Vanessa Mendoza-Alcocer  
\*Brett James Miller  
Kane Micheal Mus  
\*Victoria Anne Pakizer  
—*Summa Cum Laude*  
JaVonna Chaveriat Piatek  
—*Summa Cum Laude*  
Beau Robert Pocklington  
Brady Shawn Reichert  
Paul Tanner Savage  
Jessica Cecile Schloss  
—*Magna Cum Laude*  
Kimberly Marie Schuurmans  
\*Andrew Kenneth Smith  
Maxwell Carl Sodorff  
—*Cum Laude*  
Katherine Elizabeth Stead  
\*Jack Richard Stilwell  
\*Claire Allison Swarner  
Luke John Valenter  
Christine G. Waller  
Madison Sue Warnock  
Paul Steven Wenning  
\*Jeffrey Allen White  
Kaitlyn Leigh Williams  
—*Magna Cum Laude*  
Hannah Lillian Wise

**BACHELOR OF SCIENCE IN ENVIRONMENTAL SCIENCE**

Erica Astrid Bockman  
Jenna Louise Bracken  
\*Marcus Wayne Brown  
Hannah Jane Campbell  
Derek Anton Cutforth  
\*Sylvia Marybeth Dost  
\*Michael Mitsuo Fujimoto  
\*Richard Thomas Garagliano  
\*Corrin Nicole Hamburg  
—*Summa Cum Laude*  
Cassandra Noel Sanders  
—*Cum Laude*  
\*Benjamin Nathaniel Swita  
\*Ty Stuart Wade  
Brigitte Lucille Weese  
—*Magna Cum Laude*

\*Elizabeth Whitney  
\*Jake Edward Womack  
**BACHELOR OF ARTS IN FINE ARTS**  
Gracelia Ysabel Braganza  
\*Kaitlan Kathleen Foster  
Michael Tito Gontinas Jr.

\*John E. Gordon  
\*Skyler Nettleton Hensz  
Jingting Liu  
Tsz Kwan Tang  
\*Destiny Renee Whitcomb

**BACHELOR OF FINE ARTS**

Niklas Leonard Radford  
\*Lacey Taylor Saville  
—*Magna Cum Laude*  
Scott Simonetti  
—*Magna Cum Laude*  
Alexa Rae Turner  
—*Cum Laude*

**BACHELOR OF ARTS IN FOREIGN LANGUAGES AND CULTURES**

Abdoul Ahad Amar  
Scott Jacob Boren  
Yuri Tatiana Can  
Elena Eloisa Estrada-Zurita  
\*Rosalinda Godinez  
—*Magna Cum Laude*  
\*Jackie Hill  
—*Summa Cum Laude*  
Benjamin Howard Lord  
\*Jesus Mario Mora Zambrano  
Heather Elise Morse  
—*Summa Cum Laude*  
\*Lesley Rebecca Murray  
\*Megan Rose Olason  
Danielle Nicole Piatt-Macgregor  
Hilary Teg Sandberg  
—*Summa Cum Laude*  
Carl Ryan Sangalang  
Brian Thomas Schneider  
—*Magna Cum Laude*  
Zachary Blaine Schreiber  
—*Magna Cum Laude*  
Lauren Claire Wilkerson  
—*Magna Cum Laude*

**BACHELOR OF SCIENCE IN GEOLOGY**

\*Kellie McCormack Andrews  
Travis Jay Casey  
Matt Sigfred Cornwall  
\*Kyler Frank Crow  
Alayne Katherine Donnelly  
\*Steven Karl Hartwig  
Mark Donald Henrickson  
Zachary Monroe Mamlock  
Preston Dee Moore  
\*Mateo Benjamin Navarro  
\*Amelia Ingrid Stegman  
Justin Reid Wilson

**BACHELOR OF ARTS IN HISTORY**

Clarence Louis Baber  
Frank D. Bear Jr.  
Danielle Elyse Durham  
Josh Daniel Falce  
Austin Brian Fogelquist  
\*Eric Charles Gilbertson  
Francis Patrick Gleason  
—*Cum Laude*  
Mark Joseph Haller  
Thomas Matthew Horak  
Chelsy Rebecca Kessler  
Vincent Richard Langer  
Alistair William Mackie  
—*Magna Cum Laude*  
\*Erin Grace McKee  
—*Cum Laude*  
Stephanie Victoria Meece  
Patrick W. Mehigan  
Natasha Rose Miller  
\*Dylan Tyler Moberg  
—*Magna Cum Laude*  
\*Daniel James Naylor  
Kaitlyn Christine Noyes  
\*Meagen Anne Perkins  
\*Ryan Taylor Plouse  
Matthew Alex Revel  
Cheyenne Rochelle Rivera  
Rory Patrick Sage  
—*Cum Laude*  
Joshua Zachary Sands  
\*Eric Phillip Schacht  
\*Alex Ryan Shipman

Alex Joseph Stauffer  
 Christian Carter Stellmon  
 Danette Lynn Sulgrove  
 Katie Elaine Surritt  
 —*Magna Cum Laude*  
 Travis Quoc Tran  
 Charles Ryan Williams  
 —*Magna Cum Laude*  
 \*Mingwei Xu  
 Kezhen Zhang

**BACHELOR OF ARTS IN HUMANITIES**

Nathan Samuel Acero  
 Jessica Jo Alderson  
 —*Cum Laude*  
 \*Joshua Morgan Anderson  
 —*Summa Cum Laude*  
 Karina Deeann Anglea  
 Brissa Arreguin  
 Lauren Elizabeth Back  
 \*Barbara Gail Bartle  
 —*Cum Laude*  
 Megan Anne Boatright  
 \*Amanda Richelle Bondurant  
 Isiah Brazil  
 \*Bennett Ryan Carrothers  
 \*Frederick Hsin Chiang  
 \*Andrea Marie Dabbs  
 —*Summa Cum Laude*  
 Michael Anthony Dach Jr.  
 \*Paula Walker Dunbar  
 —*Magna Cum Laude*  
 Catherine A. Elliott  
 Brenda Lucille Fabig  
 Gaston Richard Garberg  
 Sarah Christine Haas  
 Robert Dean Harmon  
 Ayisha Nicole Hendrix  
 Katherine Marie Hundley  
 \*Yumeng Jiang  
 Douglas James Kiplinger  
 —*Cum Laude*  
 \*Gary Michael Kleingartner  
 Kimberly Anna Liebhaber  
 Jake Clayton Lotzgesell  
 \*Jacquelyn M. Lynch  
 Oceana S. Magee  
 Jamie Lee Matthews  
 —*Cum Laude*

Evon Renette McDaniel  
 Karla Adineth Motta  
 \*Michael Patrick Murphy  
 Andrew Edward Nelson  
 \*Wyatt Fengler Nunn  
 \*Jessica Marie Orr  
 —*Magna Cum Laude*  
 Mari Ann Peterson  
 \*Douglas Michael Silvius  
 Blake Robert Snyder  
 Travis Keith Strohschein  
 \*Long Ying Tang  
 Julie Diane Treves  
 \*Robert Michael Valine  
 Michele Maria Vanderzanden  
 —*Magna Cum Laude*  
 Michelle Velez  
 \*Madison Elle Watson  
 Kaitlyn Marie Wise  
 \*Elizabeth Kay Woodward  
 —*Cum Laude*  
 Chuanji Zhang

**BACHELOR OF SCIENCE IN MATHEMATICS**

Margaret Kathryn Bezold  
 Ryosuke Buffalochief  
 Peter Kurt Harker  
 Amanda Deann Hart  
 Jacki Marie Hill  
 Alyssa Kathryn Hubbard  
 —*Cum Laude*  
 Mohammed K. A Kaabar  
 Kyo Chan Keum  
 Kathryn Marie Landwehr  
 Paul William Mills  
 —*Cum Laude*  
 \*Heather Marie Morlan  
 \*Anthony Stevenmitchel Nestor  
 \*Megan Nichole Ohlson  
 Maria De Jesus Quilizapa  
 \*Scott Alexander Snow  
 Gregory Evan Stevens  
 Rachel Lee Tingley  
 Jian Wang  
 Derek Dwayne Worthen  
 —*Cum Laude*  
 \*Di Wu

Chang Xu  
 \*Renjie Zhang  
 —*Magna Cum Laude*  
 Run Zhao  
 \*Fei Zhu  
 —*Magna Cum Laude*

**BACHELOR OF ARTS IN MUSIC**

Ellen Elizabeth Grover  
 —*Magna Cum Laude*

**BACHELOR OF MUSIC**

Esther Dortha Hayter  
 —*Magna Cum Laude*  
 Meredith Alexis Heinzmann  
 —*Summa Cum Laude*  
 \*Sara Elizabeth Kochanski  
 Sonja Ellen Larson  
 —*Summa Cum Laude*  
 Reanne Lokelani Nakapaahu  
 Clayton James Parkman  
 Eric Andrew Power  
 Aaron William Reed  
 Elizabeth Meggett Tolley  
 —*Magna Cum Laude*

**BACHELOR OF SCIENCE IN NEUROSCIENCE**

Cameron J. Elde  
 —*Magna Cum Laude*  
 Lyndon Auston Lewis  
 —*Magna Cum Laude*

**BACHELOR OF ARTS IN PHILOSOPHY**

Cody Wade Koeller  
 Victor Alfonso Marx

**BACHELOR OF ARTS IN POLITICAL SCIENCE**

Khaled Mohammed Al Ashkhari  
 —*Cum Laude*  
 Nolan Matthew Barniol  
 Nathan Lee Beaumont  
 \*Randy Bolerjack  
 Emily Mariah Boyd  
 Sarah Elizabeth Boyer  
 Kathryn Michelle Chavre  
 \*Eric Robert Clark  
 \*Robert Charles Cook  
 Stephanie Dianne Dehart  
 Madalyn Jean Early

\*Emily Ann Farrar  
 Maria Asopa'epa'e Fuatagavi  
 \*Julie Maureen Fulks  
 \*Scott Benjamin Hershey  
 —*Cum Laude*  
 \*Cassandra Kaye Hollowell  
 \*Mason Scott Hoover  
 Jacob Aaron Kemner  
 William Avram Leavitt  
 \*Mitchell James Light  
 \*Shaquana Antoinette Logan  
 Angad Singh Mahal  
 Victor Alfonso Marx  
 \*Jesus Mario Mora Zambrano  
 \*Sergio Rafael Ocegüera  
 Devyn Michelle Olson  
 \*Paul Robert Petrauskas  
 Cynthia Pham  
 Danielle Nicole Piatt-Macgregor  
 Vincent Emilio Loera Rhinehart  
 Farshad Earl Saadatmandi  
 Sasa Michael Sevaaetasi  
 Kirsten Svendsen  
 \*Elijah David Swedlow  
 \*Riley Colburn Waugh  
 —*Cum Laude*  
 \*Kellen Thomas Wiggum  
 Paul Timothy Wilmoth  
 \*McKenzie Allyn Wright

**BACHELOR OF SCIENCE IN PSYCHOLOGY**

Ali Ahmad  
 Kathryn Yvonne Alexander  
 \*Emily Ann Allred  
 Kelsey Allrich  
 —*Cum Laude*  
 Alia Ibrahim Alrashoodi  
 Victoria Anderson  
 Caitlyn Elizabeth Baird  
 —*Cum Laude*  
 Karly Dawn Bateman  
 Jade Eleanor Baumann  
 Ashley Marie Beach  
 \*Kassandra Lynn Bell  
 Terra Lynn Bell  
 \*Priya Bhatia

\*Previously awarded degree



Megan Caitlin Biddle  
—*Summa Cum Laude*

Jessica Lynn Bishop  
\*Jennie Kae Boster  
Alexandra Camille Brocius  
Jordan Lee Brooks  
\*Jillian Lee Butler  
\*Tara M. Caldwell  
\*Feby Bianca Siapno Caoile

\*Katie Lee Carlson  
\*Christina Kelly Carner  
\*Emily Ann Castle  
\*Ashleigh L. Cheslek  
\*Caytlyn Marie Chin  
Krista Leigh Collins  
\*Guillermo Correa  
\*Eva Louise Cress  
—*Cum Laude*

Jennifer Renee Dalton  
—*Summa Cum Laude*

\*Brittney Reanne Darr  
—*Cum Laude*

\*Markel Everi Davis  
Emily Anne Dervin  
Rebekah Jolynn Doehle  
—*Cum Laude*

Kathryn Jean Drimmel  
—*Cum Laude*

Julie Marie Dunaway  
Chellsea Dawn Eckman  
Cameron J. Elde  
—*Magna Cum Laude*

Ashley Victoria Entrop  
Tracie Jo Eoff  
Emily Jane Everett

Heaven Lee Farrell  
Kristal Fernandez  
Jacob Alexander Force  
\*Jace Austin Fox  
\*Rocky John Futrell  
Mackenzie Rae Giles  
Taylor Alexandra Gordon  
Carissa Renae Granata  
—*Magna Cum Laude*

\*Nicole R. Grove  
Alena P. Guajardo  
—*Cum Laude*

Jessica Nohemi Guzman-  
Montes  
—*Magna Cum Laude*

Alexa LeMae Hammond-Vick  
Hannah Dawn Harada

David Todd Herrick  
Nolan Andrew Hoey

Krista L. Houser  
—*Cum Laude*

\*Jennafer Louise Johnson  
\*Kambra Rochelle Johnson  
Leilani Caroline Jones

\*Jeremy David Karelsen  
\*Kayla Marie Karelsen  
—*Magna Cum Laude*

Hea Jin Kim  
Shanna Alisha Kinonen  
Katy Nicole Koelzer

\*Janelle Marie Kovacs  
—*Cum Laude*  
\*Jewels Tamara Ann Lambert  
—*Magna Cum Laude*

\*Rebecca Danielle Larson  
Brooklyn Lorene Leistiko  
Thomas Joshua Lozano  
—*Summa Cum Laude*

Philip Edward Massengale  
Kevin Corbett Mathews  
\*Laura Eleanor Merrett

Ryelle Maurine Miles  
—*Magna Cum Laude*  
\*Anjalee Christine Mills

Erin Rebecca Mitchell  
Timothy Rey Mitchell  
Jessica Ann-Marie Monroe

Morgan Christine  
Montehermoso  
—*Magna Cum Laude*

Rachael Louise Montgomery-  
Linn  
—*Cum Laude*

Calyn Reed Morris  
Marshal Jac Nelson  
—*Magna Cum Laude*

Muhammed Nizamani  
\*Leah Marie Noack  
\*Sarah Norris

Kayla Ann North  
Adreanna Lorene Nunn  
\*Maria Guadalupe Orozco

Janelle Blair Page  
\*Megan Nicole Pankow

Morgan Rachel Papka  
—*Magna Cum Laude*

Dulcie Elizabeth Papsco  
Ryan Matthew Paulos  
—*Summa Cum Laude*

Maegan Rae Pedersen  
—*Cum Laude*

\*Kyle Matthew Person  
Daniel Kevin Petersen  
Jordan Taylor Phillips

Jeremiah H. Price  
Jodi Renee Rabitoy  
Katheryn Renay Ramirez

\*Raquel Reyna Ramirez  
—*Cum Laude*

\*Teri Mackenzie Reade  
—*Magna Cum Laude*

\*Sara Marie Rice  
\*Diane Fe Robinson  
—*Magna Cum Laude*

Chelsea Marie Rutledge  
Katie Lynn Scott  
\*Jasmine Nicole Shanklin

\*Whitney Ruth Sidor  
Krista Marie Siemion  
Annika Marit Skaugrud

\*Tia Louie Sonesouphab  
Claudia Stefanie St John  
Maylinda Rose Ybanez Suson

\*Eric Marshall Syverson  
Holly Anne Tallman-Sayers  
—*Cum Laude*

Crystal Vilda Tart  
Ryan Charles-Edward  
Templeton

Shirah Noelle Thietje  
—*Magna Cum Laude*

Chris A. Tramble  
Michelle My Anh Tran  
\*Isaac James Turner

Jeff Michael Ulrich  
Shakeila Monique Valentine  
\*Cassandra N. Vandersloot

Sarah Caitlin Walker  
\*Lindsey K. Watson  
—*Summa Cum Laude*

April Wixom  
\*Carrie Elizabeth Wohlwend  
Brandy Jo Wright

Sarah Catherine Wydick  
\*Genet Wondimu Yadetta

Michael P. Young  
—*Summa Cum Laude*

Anna Yum  
Delaney Michelle Zalud  
Reychyl Allyson Ziemer

**BACHELOR OF ARTS IN  
PUBLIC AFFAIRS**

Taylor Emory Dye  
—*Cum Laude*  
\*Zachary Douglas Nielsen  
Timothy J. Pearson

**BACHELOR OF SCIENCE**

Sayury Gabriela Alpizar  
Sierra Barrett  
\*Kiranjot Kaur Brar

\*Feby Bianca Siapno Caoile  
\*James G. Coleman  
\*Chris Steven Dan-Jumbo

\*Christian David Decicio  
—*Cum Laude*  
Amber Lynn Deprez

Jacqueline Rose DeRosso  
\*Rhett Dwaine Estrick  
\*Denev Ryan Flatz

\*Maryanne Marie Gellings  
\*Janet Amanda Goehner  
Tricia Lynn Hawkey

\*Elizabeth Grace Howd  
\*Paula M. Jimenez  
\*Mick A. Juarez

Beau Everett Keown  
Warnick Joseph Kernan Jr.  
Charlie A. Le

Jason Lewis  
Janelle Michelle Lugo  
Craig Duane Lukins

Mariah Esperanza Martel  
Thomas Eugene Maslo  
—*Cum Laude*

\*David Mejia  
\*Holly Milewski  
Beau Richard Morton  
—*Magna Cum Laude*

Megan Lee Osborn  
Jacob Alexander Portillo  
Daniel Ramirez



Maricela Ramirez  
—*Magna Cum Laude*

Brian Richard Retallic  
Tyler Matthew Rexus  
—*Magna Cum Laude*

Ryan James Roberge  
Cassandra Noel Sanders  
—*Cum Laude*

\*Tynan David Schreiber  
—*Summa Cum Laude*

Richard Tyler Simmet  
—*Summa Cum Laude*

Bruce Alexander Symonds

\*Mikel Cody Tihista  
—*Cum Laude*

\*Hanh Hong To

Katie Dawn Van Cleave  
—*Magna Cum Laude*

Samantha Dea Varrelman

Amanda Dee Wells

Aklile Tsegaye Wodajo

Rex Huihung Yu

#### **BACHELOR OF ARTS IN SOCIAL SCIENCES**

Marc E. Acevedo

\*Christopher Jon Adams

Dominic Smithie Adams

\*Terri L. Ahlf

\*Christian Albert Alfaro

Tyler Quinn Allott

Hamad Abdulmohseen  
Alsadon

Kyle Scott Anderson

\*Jeffrey Craig Angelo

Leslie Anukam

Venessa Anukam

Dawn Marie Babb

Mitchell Alan Bair

Chelsea Michelle Barone

Victoria J. Barrow

\*Brian Noel Baterbonia

\*Catherine Jo Bean  
—*Magna Cum Laude*

Jenna Nicole Beavers

\*Rachel Beck

\*Rynee Gulnaz Begum

Raiven Shantel Bell

Chanel Suzanne Biggs

Bennett Joseph Bontemps

\*Leeann Janess Bosshard

Stephanie Cathleen Brenner

Rachelle A. Brooke  
—*Summa Cum Laude*

\*Christine Marie Bryan

\*Matthew Dean Burlingame

Garm Andrew Cain

Rubi Camacho  
—*Cum Laude*

\*William Nicholas Castrow

\*Justin Matthew Chambers

Eun Cho

\*Curtis James Christensen

\*Patricia Lynn Cisneros

Brennan Michael Clark

Brenna Lee Clausen  
—*Summa Cum Laude*

Cole Jerome Clearman

Tate Jordan Collins

\*Hanna Victoria Conger

Lauren Renae Corey  
—*Magna Cum Laude*

Kyle William Cupples

Jordan Rene Daskam

Jennifer Michelle Davis court

Cindy Ann DeSimone

Jessica Clarissa Dickerson

\*Kristina Nicole Digioia

Brittany Nicole Domine  
—*Magna Cum Laude*

Justin Allen Doud

Farron Blair Dowdy

\*Charles Thomas Dunwoody

\*Kody Richard Duran

Angela Dawn Enlow  
—*Magna Cum Laude*

Mac James Erickson  
—*Magna Cum Laude*

\*Alyssa Breanne Erkel

Andres Martin Espinoza

Ron J. Evans

Eden Farias-Pulido  
—*Magna Cum Laude*

Richard Eric Feik

\*Sophia N. Ferguson

\*Jacob Thomas Flick  
—*Magna Cum Laude*

Chris M. Flynn

Amanda Milynn Ford

Doni Kekai Foster

\*Shantina Marie Fox

\*Melissa Lynn Frank

Evan C. Frobe

Nicholas John Gaeth

Robert Burns Gage IV

Deysi Perez Garcia

Carly Lois Garnaas

Gerald Lynn Garr  
—*Cum Laude*

\*Ioane Ioakima Gauta

Leah LaShea Gerber

Alicia Marie Gonzalez

Geraldine Belaine Gosvener

Tamara McMath Grandstaff-  
Chamberlain

\*Justin Martin Green

Jeremy Michael Gresser

\*Garry Michael Griffith

Stephen Edwin Gustafson

\*Arianna Jaclyn Rae Hajnal

Connor Steven Halliday

\*Tracy Ann Hamilton

\*Barret James Hamm

\*Louis R. Han

Tammara Lynn Hanni

Brittany Lynn Hards  
—*Cum Laude*

\*Diveadra Maria Harmon

Kayla Breta Henley  
—*Cum Laude*

\*Alejandra R. Heredia

Ryan Tyler Hill

Michelle Irene Hillhouse  
—*Magna Cum Laude*

\*Kyra Renee Hinds

Shannon Michelle Hoefler

\*Shaun Thomas Holmes

\*Ho Ling Hsu

Nichole Raylene Hutchinson

Michelle Lee Hylton

Thomas Laszlo Jakab

\*Kelly L. Jandreau

\*Angela Lynn Janousek

Jonathan Charles Janssen

\*Amanda C. Jen

Kaitlyn Louise Jensen

Stephanie Michelle Johnson

Debra L. Joyner  
—*Cum Laude*

Marion Catherine Kalebu

Tara Marie Kaplan

Ashley N. Kasten

Rebecca Ann Kempe  
—*Magna Cum Laude*

\*Mark Allan Balaoing Kirihara  
—*Summa Cum Laude*

Tim M. Kirima

Lisa L. Kohout  
—*Cum Laude*

\*Victoria Anna Kolbel

\*Daniel Michael Kroetch

\*Ross Alexander Kulczyk

\*Tatyana P. Kushniryuk

Jeffrey Austin Lakey

\*Linda Marie Larsen

Jules Peyton Laspa

\*Meghan Elizabeth Lawless

\*John Seong Lee

\*Brandon Robert Leonard  
—*Magna Cum Laude*

Anniella Nicole Levitt  
—*Cum Laude*

Ya Lien  
—*Magna Cum Laude*

\*Jaime Lenn Logan  
—*Magna Cum Laude*

\*Carolin Olivia Luppens

\*Biao Ma

Todd Allen Madlener

Charles Allen Marable

Sarah Anne Marvin  
—*Magna Cum Laude*

\*Anna Masewicz

William Stafford Massart

Gina Soriano Masterson

Kelly Anne Moen  
—*Cum Laude*

Madeleine Neyce Molenda

\*Betty Lee Moon

Nicholas Michael Moore

Deborah Jo Moroz

\*Alexander Joseph Mueller

Joshua William Nantz

\*Heather Anne Nelson

Robin Lynn Neuschwander

\*Leah Ann Nieradka

Kylee Ann Nimietz  
 \*Lauren Christiana Nirider  
 Holly J. Nosler  
 Sergio Antonio Orozco  
 Brent Joshua Palacios  
 Heather May Pearson  
 Samantha Andrea Penick  
 —*Cum Laude*  
 \*Rebecca Lynne Peterson  
 —*Magna Cum Laude*  
 Melissa Day Piper  
 \*Joseph Robert Ponsarella  
 —*Magna Cum Laude*  
 Brendan Michael Portschy  
 Tirsia Lee Powell  
 Jonathan Scott Pritchard  
 \*Brian John Pruum  
 \*Paris Heather Pulliam  
 \*Tobin Elijah Purcell  
 \*Zhaohui Qi  
 \*Tai Dean Ralston  
 —*Cum Laude*  
 Tanya Rantung  
 \*Courtney Nicole Reister  
 Tyler Robert-Gene Reutimann  
 Susan N. Rich  
 Danielle E. Riffel  
 —*Magna Cum Laude*  
 Miranda Zoe Rodriguez  
 Melissa Renee Rolls  
 \*Joanne Marie Rosenberg  
 Cindi Ann Ross  
 —*Magna Cum Laude*  
 Brenda Leigh Roulet  
 —*Magna Cum Laude*  
 Omar Eduardo Rubio  
 Michael Anthony Ruffra  
 Justin Ezekiel William Sagote

Noelle Cristina Sanborn  
 —*Magna Cum Laude*  
 Natalie Marie Sandoval  
 —*Magna Cum Laude*  
 Elizabeth Catherine Schmidt  
 Michael Dwayne Settles  
 Brittany Nicole Shelley  
 \*Anthony Hayon Shin  
 \*Nicholas Thomas Silvey  
 \*Najee Ali Simon  
 \*Bethany Kaye Slate  
 —*Summa Cum Laude*  
 Alicia Renee Smiley  
 \*Brianna Marie Smith  
 Courtney Alexandria Smith  
 \*Brandi Michele Stockton  
 Heather Renee Stroh  
 Kelly Louise Swanson  
 Sarah Nicole Swenson  
 \*Trace Christian Tam Sing  
 Taemi Rose Taylor  
 Hsuan-jung Tsao  
 Eleshia Nikisha Tyler  
 Robert Baltrusch Van Deusen  
 Krystian Lorraine Vincent  
 Marie Wagner  
 Alisha Nicole Wainer  
 \*Neil T. Waldbjorn  
 \*Derek Tyler Walker  
 Clinton Bruce Walton  
 Jacqueline Rachel Watts  
 Colin Deming Weinbender  
 Theron Richard West  
 Amanda Dawn White  
 Kevin David Trevor Williams  
 Alyssa Joy Wold  
 —*Cum Laude*  
 \*Mallory Rose Wordell

Sunlight Vue Yang  
 Hung-Kin Yeung  
 \*Mary Zajac  
 \*Jingtong Zhou

**BACHELOR OF ARTS IN SOCIAL STUDIES**

Arianne Katarina Pulsipher  
 —*Cum Laude*  
 Melissa Raven Brooke Sexton  
 —*Cum Laude*

**BACHELOR OF ARTS IN SOCIOLOGY**

\*Cicely Marie Baker-Beebout  
 Samuel Luca Capeloto  
 \*Ty David Draszt  
 Chellsea Dawn Eckman  
 \*Rosalinda Godinez  
 —*Magna Cum Laude*  
 \*Sally Ha  
 \*Louis Aaron Harris  
 Ulises Herrera  
 \*Randall E. Hodges  
 Allison Faye Larson  
 Taylor Martin Leitze  
 Toni Lee Lembcke  
 Trevor Alexander Marks  
 Isiah Dimitri Myers  
 Robert Lee Peterson III  
 Hamza Roberts  
 Patrick J. Sifton  
 \*Muriel Stewart Templeton  
 \*Amanda Laurel Thomson  
 —*Magna Cum Laude*  
 Jon P. Yates  
 Robert Francis Zaragoza  
**BACHELOR OF ARTS IN WOMEN'S STUDIES**  
 \*July Peaches Myers

**BACHELOR OF SCIENCE IN ZOOLOGY**

LeAnn Nicole Baxter  
 \*Brandon Earl Black  
 Jack Elliot Bonnington  
 Samantha Rae Castoldi  
 —*Cum Laude*  
 Elise Kathryn Ellingsen  
 —*Magna Cum Laude*  
 Kortney Linnea Fritz  
 James Kenneth Blaze Gentry  
 \*Savannah Rose Guillen  
 —*Magna Cum Laude*  
 Kelly Marie Hagerman  
 —*Summa Cum Laude*  
 Dalton Patrick Harding  
 —*Cum Laude*  
 \*Jenna Cherise Jarrell  
 —*Magna Cum Laude*  
 Christine Anne Laucella  
 Rebecca Morgan Lewis  
 Allison Renee Loy  
 \*Jerica Mary Marterella  
 Courtney Jacklyn May  
 Trenton Jonmichael McGlothlin  
 \*Jason Thomas Monda  
 —*Cum Laude*  
 Jacqueline April Schultz  
 —*Cum Laude*  
 \*Chelsea Meagan Steele  
 \*Carolyn Suzanne Supit  
 Christopher Allan Torres  
 Kai Wang  
 —*Summa Cum Laude*  
 \*Matthew A. Weger  
 Christopher Stephen Woodard

---

**Carson College of Business**


---

**BACHELOR OF ARTS IN  
BUSINESS  
ADMINISTRATION**

Connor Robert Abramson  
 Brynne Elizabeth Agnew  
 Wendylie Magallanes Alix  
 Abdullah Aljuwayhir  
 \*Amber Nicole Allshouse  
*—Magna Cum Laude*  
 John Taylor Altomare  
 Alexandria Renae Amburgey  
*—Magna Cum Laude*  
 \*Wyatt Albert Arnall  
 Ho Wa Au  
 Jeremy Ryan Bailey  
 Miranda Leigh Bailey  
*—Magna Cum Laude*  
 Jon David Barter  
 Kyle Gordon Beatty  
 \*Craig Douglas Beaty  
 \*Daniel Thomas Becker  
 \*Cris M. Bellinger  
*—Magna Cum Laude*  
 Samantha Tatyana Bennett  
 \*Clark James Berryman  
 Josh Andrew Bircher  
*—Summa Cum Laude*  
 Jessica Bischoff  
 \*John-Paul Joseph Blair  
 Monica Joan Blommel  
 Peter Moses Boettcher  
*—Summa Cum Laude*  
 \*Benjamin James Bohanson  
 Matthew Todd Boley  
*—Cum Laude*  
 \*Tyler John Bongiani  
*—Magna Cum Laude*  
 Aratchaporn Boriratrith  
*—Cum Laude*  
 \*Joel Nicholas Bosch  
 April Spring Bowman  
*—Cum Laude*  
 \*Christopher Mychal Boyd  
 Amanda R. Bragg  
 \*Jennifer Suzanne Branham  
 Alex Vincent Braulio  
 Kassi Catherine Brigham  
 Joshua M. Brimberry  
*—Magna Cum Laude*

Riley Youngs Brindle  
 Preston James Bringhurst  
 \*Cody Jason Brown  
*—Cum Laude*  
 Bryan George Bui  
 Thomas Nolan Burdick  
 Spencer William Burkland  
 Khrystyna V. Bystrytska  
 Jordan Edward Caldwell  
 Chase Anders Carlin  
*—Magna Cum Laude*  
 Cameron Michael Carson  
 Taylor R. Casey  
 Kevin Michael Cash  
 Katelyn Marie Cearlock  
*—Magna Cum Laude*  
 Yat Him Chan  
 \*Blake Andrew Chapman  
 \*Chen Chen  
 \*Li-Ju Chen  
*—Cum Laude*  
 Qian Chen  
 \*Yinting Chen  
 Cynthia Eve Chesbro  
 Daniel Robert Chester  
 Khristina Somali Chhin  
 Katherine Soo Chin  
 Jason Tyler Chun  
 \*Amy M. Coats  
*—Magna Cum Laude*  
 Ethan Daniel Coleman  
 Joshua Michael Collop  
*—Summa Cum Laude*  
 Christine Lorraine Connors  
 Kyle Anthony Costa  
 Jennifer Gayle Cotrone  
 \*Maxwell Farnum Cowley  
 \*Mark Thomas Crabtree  
*—Magna Cum Laude*  
 Timothy Charles Crisp  
*—Cum Laude*  
 \*Lee Sung Cyr  
*—Magna Cum Laude*  
 Chia-Chieh Dai  
*—Magna Cum Laude*  
 Kyla May Dainty  
 Aime Kenneth Dako Sr  
 \*Shelby Jean Deaton

\*Mark Henry DeGoede  
 Tucker Laurence  
 Degraffenreid  
 David Christopher Dehrkoop  
 Emily Anne Dervin  
 \*Ember Louise Devaul  
 \*Calan Terese DeWald  
*—Magna Cum Laude*  
 Armando Diaz  
*—Cum Laude*  
 Crystal Aurelia Dierking  
 \*Caitlyn Lindsay Dimock  
 Manni Ding  
 \*Tung Nhat Thanh Do  
 \*Liselotte Doggen  
 \*Leslie Barton Dolence  
 Jiajia Dong  
 Ashley Marie Douglas Sr  
 David Nathan Douglas  
 Brett Richard Druffel  
 Ran Duan  
 Christopher Charles Dugan  
 Abigail Anne Duncan  
 Eric Michael Dusoleil  
 Chad A. Edmonds  
 \*Vladimir E. Emeliyanenko  
 \*Christine N. Erwin  
*—Cum Laude*  
 Beatriz Adriana Espinoza  
 Rebecca Elizabeth Evans  
*—Cum Laude*  
 \*Blake Derek Federinko  
 Michelle Marie Ferguson  
 Kayla Renae Fiedler  
 \*Toree Rae Flynn  
*—Cum Laude*  
 \*Eric James Fox  
 Matthew George Freeman  
 \*Heidi Christine Galllear  
 Xinyi Gao  
*—Magna Cum Laude*  
 Bryanna Lyn Garza  
 \*Jill Roudebush Gaunt  
 \*Anzhela Y. Gershun  
 Asraar Faisal Ghazzawi  
*—Summa Cum Laude*  
 Stephanie Lynn Gilmore  
*—Cum Laude*

Andrew Dillon Gnaneswaran  
 Hannah Ellen Goehri  
*—Cum Laude*  
 Jordan Gomez  
*—Cum Laude*  
 \*Timothy James Goodrich  
 \*William Cole Goodstein  
 \*Ted Spence Gordon  
 Danielle Marie Goto  
 Erica Lynn Graham  
 Grayson Pier Grant  
 \*Micah Immanuel Gregorio  
*—Cum Laude*  
 \*Scott Frank Gresko  
*—Magna Cum Laude*  
 \*Allison Noel Griffith  
 Miranda Lee Grossarth  
 Jeffrey William Grotjahn  
 \*Jacilyn May Grundy  
 Gregory Hall Jr  
 Scott Mamoru Halladin  
 Osama Maher Hamadeh  
 \*Ryan Cahaley Hamilton  
 Liuting Han  
*—Cum Laude*  
 Nicole Taylor Harbert  
 Katie Ruth Hardin  
 Nick Leidy Hart  
 Aaron John Haugen  
*—Summa Cum Laude*  
 \*Sara Haveman  
 Alexander Abe Heinz  
 Adam Hert  
 \*Brian Gregory Hickel  
*—Magna Cum Laude*  
 Kelly Marie Hobson  
*—Cum Laude*  
 Nicholas Addison Hoeft  
*—Cum Laude*  
 Faith Elizabeth Hollett  
 Brandon Thomas Hovde  
 Kang-Ling Hsu  
*—Cum Laude*  
 \*Shi Hu  
*—Cum Laude*  
 Yuan Huang  
 \*Chun Leung Hui  
 Wan Sze Hung

Amanda Ashley Hurlbert	*Haoming Li	*Kohei Mitamura	Jack Patrick Quilici
Justin Peter Ingersoll	*Jiacheng Li	Sam D. Moe	— <i>Cum Laude</i>
Maiko Itani	— <i>Cum Laude</i>	Tyler Casimir Montana	*Monique Nicole Ramos
— <i>Cum Laude</i>	Tuo Li	Nicholas Patrick Montano	Stephen Michael Raney
Amita M. Jain	Weiwei Li	*Jesus Mota	Daryl J. Rave
*Cj Marie James	Yafei Li	*Nader Nathan Motazed	— <i>Summa Cum Laude</i>
— <i>Magna Cum Laude</i>	Yuzhu Li	Abigail Marie Mounce	Timothy Lee Reading
Jessika A. James	Joshua Isaac Lilly	Nadia Elizabeth Mousleh	Taylor Jay Reed
Sheri Trust Jeha	Xiaofang Lin	Jessica Caryn Muentner	Scott Anthony Remily Jr
— <i>Cum Laude</i>	— <i>Cum Laude</i>	Tyler Allen Mumby	*Debra Faye Robinson
William Potter Jensen	Dan Liu	Mikayla Lyn Myers	— <i>Cum Laude</i>
Xiaofei Jiang	Lu Liu	*Isaac Donel Myhrum	Kathleen Ann Roche
Xin Jiang	— <i>Cum Laude</i>	— <i>Cum Laude</i>	Jeremiah James Roffler
Erik Ralph Johnson	Kerri J. Lovelass	Angela Kelsay Nation	Yan Rong
Jamie Marie Johnson	— <i>Magna Cum Laude</i>	Alassane Harouna Ndiaye	— <i>Cum Laude</i>
*Lindsey Ann Johnson	Zhuanlixu Lu	David Anthony Nelson	*Kate Elizabeth Rose
*Scott Alistair Johnson	Zhaoyuan Luo	Andy Quan Nguyen	William David Ross
Leandra Johni Johnston	— <i>Cum Laude</i>	— <i>Magna Cum Laude</i>	Nikolaijs Jekaps Rudzitis
Kim Kathrein	Shawna Loreen Lynch	Susan O'Neil Nicholson	Andrew James Rustemeyer
Navjot Kaur	*Keegan Cole Malmanger	*Yusha Joy O'Brien	*David Rybalka
*Mallory Katherine Kent	*Brian A. Marchand	Nataliya Olennikov	Tino Sam
*JinWoo Kim	Joseph Lee Martin	John F. O'Neil	Carl Ryan Sangalang
*Yongjoo Kim	Elias Rafael Martinez	Chelsey A. Openshaw	Bryan J. Saravia
— <i>Cum Laude</i>	— <i>Magna Cum Laude</i>	Adam Austin Orchard	William Douglas Sarbaugh
Yunmi Kim	Mark William Mason	Taeko Owan	Jonathon Scott Saucier
*Cheryl Ann Kingston-Shirley	*Bryan Clark Maybee	*Dambin Park	Thomas P. Saylor III
Jessica Nicole Klein	*Danny Tyler McAloon	DooHong Park	— <i>Summa Cum Laude</i>
Nicholas Ryan Koopmans	*Connor Hamilton McCulloh	— <i>Cum Laude</i>	Kyle C. Sechler
Vanessa Lee Kostick	Daniel Ross McDonald	Jeremy John Parks	*Junseok Seo
*Mouhamad-Sami Wael	Brian McGuire	Craig M. Parsons	*Benjamin Fred Servatius
Kouttainay	— <i>Magna Cum Laude</i>	*Stephanie Rae Patterson	— <i>Cum Laude</i>
Lance Lee Kraftenberg	Scott Robert McManus	Joseph Michael Parr Peters	Deborah A. Shaw
— <i>Summa Cum Laude</i>	*Ian Michael McNa	*Mitchell S. Peterson	— <i>Magna Cum Laude</i>
Charles Herbert Krieger	Erin Bailey McNannay	— <i>Magna Cum Laude</i>	*Zhengkai Shen
— <i>Magna Cum Laude</i>	*Shelby Nicole Meader	Randy Thompson Poole	Jie Shi
Kelcie Leeann Kromminga	Darren Sergei Medina-	*Bradley Charles Pope	— <i>Cum Laude</i>
— <i>Cum Laude</i>	Maloney	— <i>Magna Cum Laude</i>	Jayson Shieh
Trevor Ryan Kurz	Brett H. Melvin	*Dirk Paul Poppie	*Miku Shishido
Dae Yoon Kwon	— <i>Magna Cum Laude</i>	*Eunice Khonesavanh	*Victoria Anne Shuler
Sally Frances Laframboise	Belin Iris Mendoza	Pravisay	*Zachary Scott Shulkin
Jenna Katherine Lambdin	*Ge Meng	*Gabrielle E. Prawl	Kaela Denae Simeona
Zachary William Langdon	Douglas Ray Mershon	— <i>Magna Cum Laude</i>	Kevin William Simmons
*Brittanie Ann Larson	Marlene Marie Meyers	Christina Louise Price	— <i>Cum Laude</i>
*Kory Devon Lauberth	— <i>Magna Cum Laude</i>	— <i>Cum Laude</i>	Thomas Parker Simms
Boeun Lee	*German Meza	Chase Jackson Propst	*Karol Skadiang
— <i>Cum Laude</i>	*Kandis Shonae Michnal	*Megan Lee Pylican	— <i>Summa Cum Laude</i>
Brian Francis Leonard	Quinn William Milligan	Huan Qi	Chase Slater
William Earl Leppert	Patricia Anne Mims	*Yanyangzi Qu	— <i>Cum Laude</i>
Jeremiah Robert Lewis	*Devon Norval Minsk		Matthew Carl Small



Janie Kate Smargiassi — <i>Magna Cum Laude</i>	Connor M. Valenter	Leilani Renee York — <i>Magna Cum Laude</i>	Carly Michelle Kawamoto
David William Smith — <i>Cum Laude</i>	Joseph Michael Vaughn	Shao-Pu Yu	*Madeleine Kaye Kerley
Layton William Smith	Katherine Estelle Vinatieri — <i>Cum Laude</i>	Junqin Zhang — <i>Cum Laude</i>	*Dina Kocan
Sean David Smith	Ben Paul Vissotzky	*Yiqiu Zhang	*Nadezhda Kozhevova
Keven Myung Suk So	*Anthony Van Vo	Yu Zhang	Nickolus Miguel Leach
Shad Michael Sorensen	*Amissa Brianne Voss	*Zeting Zhao	*Tsz Li Leung
Anthony D. Squires	Darjan Vucak	*Lin Zheng — <i>Cum Laude</i>	Dan Li
*Brittney Anne Stapleton — <i>Magna Cum Laude</i>	Jacob Dean Wadel	*Yuming Zhong	Jiajun Li — <i>Magna Cum Laude</i>
Blake Thomas Steele	*Bruce Bradley Walker	Guoxiao Zhu	Melissa Arde Lobb
Keil Evan Steinke	Jeffrey Michael Wallace — <i>Cum Laude</i>	*Xinzhu Zuo	Jiaji Luo
Ksenia Stetsen — <i>Cum Laude</i>	Lori Sue Wandell	Alexander Bruce Zwaschka	*Resham Harish Malkani
*Ruslan B. Stetskiy	Peiyan Wang — <i>Cum Laude</i>	<b>BACHELOR OF ARTS IN HOSPITALITY BUSINESS MANAGEMENT</b>	*Abhilasha Manjunatha
Breanne Elizabeth Stillman	Siyi Wang	*Rami Habib Azar	Clare Louise McKannay
*Nathan Tyler Bryce Stover	Wei Wang	Dooley Erin Brown	Riley Edward McKeehan
*Kelly Lawana Sullivan	Yifeng Wang	*Heather Victoria Chan	Hailey Lorraine Morgan — <i>Magna Cum Laude</i>
Zhong Sun — <i>Cum Laude</i>	Patricia JoAnn Waxham — <i>Magna Cum Laude</i>	Jessica Lyn Chester	*Olga Musilovich
Tifanie A. Swope	Thomas Allen Weis — <i>Magna Cum Laude</i>	Yvonne Gill Chien — <i>Cum Laude</i>	*Ashlee A. Nelson
Lam Sze	Brady R. Wenrich — <i>Magna Cum Laude</i>	*Cassandra Lee Clark	*Kyle Evan Notturmo
Yiqing Tan	Kristina West	Natalie Dawn Connacher	Austin Taylor Pfeifer
*Zachary Shane Tankersley	Travis Daniel West	*Papari Devi — <i>Magna Cum Laude</i>	Diane Kay Anderson Piedad
Adriana Tejada	*Sharon May Wiles	Jameson Ernest Dill — <i>Cum Laude</i>	Amanda Nedra Ransom — <i>Cum Laude</i>
*Dorothy R. Thomas	Weston Jack Willis	*Radu Dolghi	Corey Brice Roseberry
*Ashley Brooke Thompson	Derek Grant Woolsey	Courtney Quin Edwards	Cesar Eduardo Sanchez
*McKenzie Lenee Thompson	Nina Marie Wooten	*Jennifer Ann D. Eugenio	Kaylee Marie Schmidt
Connor James Tidd — <i>Magna Cum Laude</i>	*Di Wu	*Bayley Renee Galbreath	*Nicole Katherine Signer — <i>Magna Cum Laude</i>
Samuel Lucas Tihinen	Kaili Wu	*Kaushal Sanjay Gandhi	*Tyler James Speer
Cassandra Jo Torres — <i>Cum Laude</i>	*Xijun Wu — <i>Summa Cum Laude</i>	John Michael Groen	Morgan Taylor Spencer
Yesenia Torres	Shixuan Xiang	Alyssa Sarah Hemmer	*Quinn Marie Stadshaug
Samnang Touch	Nan Xie	Lauren Inness — <i>Cum Laude</i>	Jason Michael Stevens
*Anh Tuan Tran	Yiqing Yang — <i>Cum Laude</i>	Jennifer Suzanne Israel	Mike Tram Jr
*Janet Tran	*Zhiye Yang	Jennifer Mary Johnson	Taylor Christine Wolf — <i>Cum Laude</i>
Tam Minh Tran — <i>Magna Cum Laude</i>	John L. Yi — <i>Magna Cum Laude</i>	*Kendra Lee Johnson	*Keith Siulun Wong
Timmy Van Tran	*Vince C. Ying — <i>Summa Cum Laude</i>	Alexander Paul Kaser — <i>Magna Cum Laude</i>	Megan Gail Yount
*Katherine Noel Turnbull			*Seowon Yu
Jamie O'Neil Usselman			

---

## The Edward R. Murrow College of Communication

---

**BACHELOR OF ARTS IN COMMUNICATION**

Andrea Sarai Aguilar  
 Anthony L. Anderson  
 Julia Anne Anderson  
 Troy James Askins  
 \*Caitlin Alyse Baird  
 \*Matthew Charles Benoit  
 Austin Scott Benson  
 \*Aimee E. Bergman  
 Tyler Michael Blakley  
 \*Katherine Elizabeth Blunt  
 Tannis Elizabeth Bogart  
 \*Koby Christopher Boley  
 \*Christina Ann Bolt  
 Alexandra Grey Bordeaux  
 \*Jacob Tyler Bowman  
 \*Tag Wallace Brown  
 Nicolas V. Calcinari  
 \*Brittany Erin Cardoza  
 \*Bailey Opal Carr  
 \*Eric Andrew Cascio  
 Cheuk-Kit Chung  
 Sarah R. Clifton  
   —*Magna Cum Laude*  
 Thomas J. Cooke  
 \*Jonathon Yoshio Crawley  
 Alexander Nicholas Crescenti  
 \*Luis Alberto Cuevas  
 Yuchen Cui  
 \*Samantha Ocean Davis  
 Michaelanne Nicole Demarco  
 \*Bethem K. Deresse

William L. Diiorio  
 Melaina Elizabeth Dionas  
 \*Luke Aaron Dittmer  
 \*Seth Tyler Dunlap  
 Garret Allen Easthouse  
 \*Caylene Elise Sablan Eddings  
   —*Magna Cum Laude*  
 \*Sarah Elizabeth Fajardo  
 Cole John Foreman  
 \*Tierra Lanae Frost  
 \*Lauren Nicole Garbe  
 \*Ling Ge  
 \*Amanda Victoria Gonzalez  
 \*James T. Hamilton  
 \*Korin Marie Hedlund  
 \*Monica Renee Hernandez-Ramirez  
 Kimberly Linn Hiegel  
 Anne Shannon Holten  
 Sherese Nicole Hooper  
 Lauren Ashley Houk  
 Yu-Chen Huang  
   —*Cum Laude*  
 Camryn Michelle Irwin  
   —*Magna Cum Laude*  
 \*Delaney Lynne Johnson  
 \*Taylor Renee Johnson  
 \*Kelley Anne Joyner  
 \*Mariko Joy Kariya  
 Devin Ryan Kennedy  
 Andrew James Kerslake  
 \*Kimberly Colleen Langston  
 Bridgette Nicole Larsen  
   —*Cum Laude*

Anika Renee Lavios  
 \*Sidney Karen Lee  
 Kevin West Lemond  
 Tingzhen Liang  
 \*Siyu Liu  
 \*Juan Daniel Lopez  
 David McKinlay Martin  
 \*Samantha Diane Martin  
 Renee Amy McCann  
 \*Zachary Micah Menchel  
 Nathan Merrill  
 Jessica Lynn Monteggia  
   —*Cum Laude*  
 \*Amanda Marie Morrell  
 Josh James Morris  
 Shannel L. Mullan  
 \*Lesley Rebecca Murray  
 Hayden Edward Njos  
 \*Chelsea Ann Noonan  
 Sara Olin  
 \*Christian Scott Osborn  
 Haley Brianne Oswald  
 \*Cornelis J. Papenfus  
 \*Colin Cameron Pearson  
 \*Gabrielle E. Prawl  
   —*Magna Cum Laude*  
 Sarah Nicole Quigley  
 \*Karl W. Qvigstad  
 Taylor Nicole Ranger  
 \*Cassandra Adelle Ricci  
   —*Magna Cum Laude*  
 \*Haylee Jane Rice  
   —*Cum Laude*

\*Lorin Michele Robertson  
 \*Mariecel Ferrer Robles  
 \*Amanda Lynn Roley  
 Victor Sanchez  
 Hilary Teg Sandberg  
   —*Summa Cum Laude*  
 Cory Matthew Schramm  
 Kurt Matthew Schroeder  
   —*Cum Laude*  
 Kayla C. Seaforth  
 \*Kyle Christopher Sherman  
 Lindsey Nicole Smith  
   —*Summa Cum Laude*  
 Nikolas Evan Stapleton  
 Adriana Tejada  
 \*Wasowy Thay  
 \*Rachael Elizabeth Trost  
 Renee Marina Valle  
 Sele Ann Vance  
 \*Ian Augustus Vensel  
 \*Garrett Michael Vincent  
 Dominique Cesena Wald  
 \*Sisi Wang  
 \*Tanner Jason Wang  
 Alexander William Watt  
   —*Cum Laude*  
 \*Allison Renee White  
 Jenae Leann Wilczynski  
 Ryan Joesph Willey  
 \*Catlin Rose Williams  
 \*Jordan Taylor Williams  
 Sabrina Ann Wood  
   —*Cum Laude*  
 Xiaomeng Zhao

---

## College of Education

---

**BACHELOR OF SCIENCE IN ATHLETIC TRAINING**

\*Dominique Bernice Hyatt-Oates  
   —*Magna Cum Laude*

**BACHELOR OF ARTS IN EDUCATION**

Jadie Marie Barton  
   —*Cum Laude*

Stevi Lynn Blythe  
   —*Summa Cum Laude*  
 Samittra Sue Boggs  
 Shayla Rose Boyle  
   —*Magna Cum Laude*  
 April Ann Breedlove  
   —*Magna Cum Laude*  
 Bailey Carlson  
   —*Summa Cum Laude*

James Christopher Climer  
   —*Magna Cum Laude*  
 Deanna Louise Colburn  
 Anna Soa Combest-Friedman  
 Maris Mareen Digiovanni  
   —*Cum Laude*  
 Shelby Ann Everitt  
   —*Cum Laude*  
 Kacie Leigh Fincher  
   —*Magna Cum Laude*

Katherine Elizabeth Frakes  
   —*Magna Cum Laude*  
 Abigail Jordan Grisham  
   —*Magna Cum Laude*  
 Peter John Hall  
 Breanna Yi Haynes  
   —*Cum Laude*  
 Sarah Ashley Herranen  
 Victoria Elizabeth Hill  
   —*Cum Laude*

Deanne R. Hollenbeck  
 Tyley James Hunter  
     —*Magna Cum Laude*  
 Grace Anne Hylton  
 Ashlie Anne Jensen  
     —*Cum Laude*  
 Lindsey Sarah Kelly-Huff  
 Shelby Marie Kesterke  
 Jessica Joy Kinmark  
 Kristy Nicole Lange  
     —*Cum Laude*  
 Jesse Vernon LaSarte  
     —*Summa Cum Laude*  
 Jordan Thomas Lee  
     —*Cum Laude*  
 Elizabeth Marie Leonard  
 Kaylynn Skye Long  
     —*Summa Cum Laude*  
 Brent Andrew Mansell  
     —*Magna Cum Laude*  
 Rebecca Renee Martin  
     —*Magna Cum Laude*  
 Avery Code Maxwell  
     —*Magna Cum Laude*  
 Amy Louise McKeown  
     —*Magna Cum Laude*  
 Megan Lea McNamara  
     —*Cum Laude*  
 Hannah Catherine Melberg  
     —*Summa Cum Laude*  
 Andrew Earle Miller  
 Shantia Lauren Miller  
     —*Cum Laude*  
 Meghan Carolee Newton  
 Alma Yaneth Nicacio  
     —*Magna Cum Laude*  
 Sarah Elaine Nolet  
     —*Magna Cum Laude*  
 Anayssa Pulido  
     —*Magna Cum Laude*  
 Alexandria Virginia Quann  
     —*Magna Cum Laude*  
 Kyle Thomas Rasor  
 Chester Arthur Richmond  
 Thomas Alan Sappington  
 \*Michael James Scourey  
 Kirsten Diann Sierra

Randal Leif Simensen  
     —*Summa Cum Laude*  
 Megan Rachelle Smith  
     —*Summa Cum Laude*  
 Hannah Marie Smith-Morgan  
     —*Magna Cum Laude*  
 John Edward Sullivan Jr.  
     —*Cum Laude*  
 Paige Anne Thomson  
     —*Cum Laude*  
 Taylor Marie Werner  
     —*Magna Cum Laude*  
 Mary T. Westlake  
 Samantha Jean Wilkes

**BACHELOR OF SCIENCE IN  
 KINESIOLOGY**

\*Brent Dale Anderson  
 \*Juan Carlos Bailon-Schubert  
 \*Emma Christine Barrington  
 Benjamin Michael Bartell  
 Ryan James Berry  
     —*Cum Laude*  
 Jordan Phillip Macias Bork  
     —*Magna Cum Laude*  
 Rachel Ann Debray  
 Anthony James Dematteo  
     —*Magna Cum Laude*  
 Elena Eloisa Estrada-Zurita  
 Clayton Jeffrey Farrow  
 Gabrielle Jane Fiano  
 Sean Patrick Franck  
 Michele Cynthia Lynn Fuerst  
 Molly Erin Garner  
 Grant Daniel Gillman  
 Tyler James Groom  
 Nicholas J. Harteau  
 Chelsea Kiana Hays  
 \*Tyler Jacob Hickman  
 Samantha Rae Hooker  
 \*Erik G. Johnson  
 Haley Suzanne Johnson  
 Nicholas Lee Johnson  
 \*Anne Jeanette Kenney  
 \*Matthew Alexander Laggart  
     —*Cum Laude*

Samantha Ann Lewis  
     —*Summa Cum Laude*  
 Taylor Noelani Maclean  
 Crystal Ariel McDaniels  
 Michael Gregory Monda  
     —*Cum Laude*  
 Tyler Robert Morgan  
 \*Janelle Christine Packer  
 Rachel L. Peters  
 \*Riley Phelps  
 \*Michelle Pillette  
 Matthew E. Pirie  
 Cameron Michael Prins  
     —*Magna Cum Laude*  
 Joseph Michael Pulitano  
 Kyle Joseph Raschko  
 Susan Jaclyn Reider  
 Mallory Opal Roberts  
 Ryan Anthony Saparto  
 \*Tyler Takaumi Satoshige  
     —*Cum Laude*  
 Lucia Teiyaa Shompole  
 Tyler Albert Stirtz  
 Kayla Christine Storey  
     —*Cum Laude*  
 \*Bisera Tubic  
 \*Madeline Kay Vance  
 \*Alina Robin Vanruff  
 \*Todd Wakefield  
 \*Brittany Lynn Webster  
 \*Shelby Leigh Welch  
 \*Sean Michael Whaley  
 Kristin Cheyenne Winona

**BACHELOR OF ARTS IN  
 SPORT MANAGEMENT**

\*Gordon Scott Anderson  
 \*Ethan Michael Bayer  
 Trevor Michael Bennett  
 \*Kendall Alex Boliba  
 \*Sara Lauren Buchanan  
 \*Matthew Evan Caggiano  
 Robert Foster Campbell  
 Kylie M. Carpenter  
 Mark Anthony Davis  
     —*Magna Cum Laude*

Timothy Scott Dotson  
 Brian James Duckett  
 Samuel James Ewer  
 Eric Douglas Fassler  
 \*Patrick Joseph Feldman  
 Rachel Theresa Gregory  
 \*Kent Michael Hagen  
 Keaton Hayenga  
 \*Jordan Kristopher Hudson  
 Kyle James Hurt  
 \*Devin Michael Jones  
 Katelyn Kay Jones  
 \*Michael Chad Kebba  
 Tylor Chase Labelle  
 Connor William Lamoureux  
 Jefferson James Lee  
 \*Sang Gyun A. Lee  
 \*Gavin Daniel Lejameyer  
     —*Cum Laude*  
 \*Kevin J. Massimino  
 \*Connor James McCormick  
 \*Jace Dillon McMinn  
 Anel Melic  
 \*Scott Peixotto Monk  
 Titus Nordquist  
 \*Ella Lee Odland  
 Gilberto Parra Jr.  
 \*Andrew Scott Petersen  
 Tola Pong  
 \*Zach Soriano Rivera  
 \*Jay Michael Shiogi  
 Kyle Nohea Skoog  
 \*Levi Joseph Stewart  
 Blake Christopher Tamminen  
 Gregory Alan Testa  
 Josh Tyler  
 Zachary Blake Wall  
 Peter Arnold Wiggum  
     —*Cum Laude*  
 Patrick Davis Winter  
 \*Joseph Richard Wright

## Voiland College of Engineering and Architecture

### BACHELOR OF SCIENCE IN ARCHITECTURAL STUDIES

Christopher Ryan Hanson

\*Bethany M. Lang

### BACHELOR OF SCIENCE IN BIOENGINEERING

Jessica Feist

\*Abdelrhman Mohamed  
—*Summa Cum Laude*

Rebecca Erin Podhora

### BACHELOR OF SCIENCE IN CHEMICAL ENGINEERING

\*Gregory Brandon Collinge  
—*Magna Cum Laude*

Ryan James Daut

Olivia Marie Dehner

\*Oscar DeLeon

\*Mary Elizabeth Kratovil

Zheng Li

Olivia Elizabeth Molinari

\*Shelby Devin Nerison

Rebecca Erin Podhora

Zachary Robert Wick

### BACHELOR OF SCIENCE IN CIVIL ENGINEERING

\*Brunye Richard Aloysius Adams

Madhaj Al-Kawsi

Erik William Anderson

Eliasib Apodaca

Julius Ceasar Isip Arevalo

Matthew Stephen Barner

Adam Michael Brain

Cameron Clark Butler

\*Christian Timothy Canfield

Erin Whitney Carlstrom

Qianqian Chen

Xueting Cheng

Matthew Scott Colling

\*Joel Peter Conijn

Robert James Endsley Jr.

\*Jonathan Edward Evatt

\*Louis Michael Fox

Alex Joseph Francis  
—*Summa Cum Laude*

Nicholas Carl Franke

\*Jason C. Froelich

\*John Michael Gjendem

\*Laurel Elisabeth Graves  
—*Magna Cum Laude*

\*Elias Reed Hansen

Ryan Evan Harmon

Neil Jerold Hartman  
—*Magna Cum Laude*

Josiah Leigh Hartom

\*Kaylor David Hasbargen

Clarke Douglas Hinkle

Osman Madey Hussein

David Micheal Irwin

James Douglas Jarvis  
—*Magna Cum Laude*

Ashley Lynn Jones  
—*Cum Laude*

Elise Kathryn Jones  
—*Summa Cum Laude*

Jared Benjamin Kain

Joyce Joseph Khoury

Justin Ray Kittelson

\*Brian Michael Ladd

Alexander James Lambdin  
—*Magna Cum Laude*

David Michael Landrus

\*Logan Philip Lee

\*Xiangrui Li

Justin Kai Lim

Kent Henry Manalo

\*Corey Walter McCurry

Matthew Kyle McGinnis

Jarrold J. Miller

\*Megan E. Mosebar

\*Antony Musembi Mwengi

Paimahn Nakhjiri

Daniel Albert Needham

\*Brittney Nichole Oliver

Isaac John Olson

Elisha Dan Ondov

Shelby Lynn Oney  
—*Magna Cum Laude*

\*Vu Hoang Phan

\*Thao Thi-Minh Phung

Denis Vladimirovich Polskiy

Aaron Anthony Rapozo

Kristine May Sajor Realon

\*Drew James Savas

Shylo Elaine Shorthouse

Tatiana Na Skadorwa  
—*Magna Cum Laude*

Jake William Smith

Frank Robie Stanaszek

Emily Kay Starkel

Aron Christopher Sturko

Benjamin Tanjo

Stephanie Margaret Vincent

\*Jeffrey David Walker

Justin Clifford Wang

\*Xinzhou Wang

Riku Erik Wanzek

Stephen Patrick Wheir

Alexander Douglas White

Michael Andrew Williams

\*Easton Anthony Wright

\*Yuyang Wu

\*Ryan James Yokum

\*Hengwei Zhang

### BACHELOR OF SCIENCE IN COMPUTER ENGINEERING

Daniel Owen Harvey

Aaron W. Hubbard

Kelsi Michelle Lakey  
—*Cum Laude*

Matthew Thomas Lambdin

Nicholas Bradley Mewes

Kyle Earl Tynan

Kyle Jacob Vandelac

### BACHELOR OF ARTS IN COMPUTER SCIENCE

Kyle Brady Bell

Bryce Landon Handerson

Matthew Donald Holmly

\*Aaron Ward Lagerberg

Daniel Salvador Martinez

### BACHELOR OF SCIENCE IN COMPUTER SCIENCE

Omar Abdulaziza Alqasem

Michael B. Belay

Kelsey Paige Bueno

—*Cum Laude*

Hyesun Cha

\*Young J. Chon

\*Jon Churchill

Joshua Alan Clark

Forest Daniel Clay

Lyle James Dallas

Daniel Anthony DeLamare  
—*Magna Cum Laude*

Brian Chandler Fleck

Daniel Ryan Hanlen

Michael Herjanto

Christopher W. Hyde

Matthew Ryan Karcher

Tovah B. Kerr  
—*Summa Cum Laude*

Gregory King

Jordan Ludwig Koszarek

Jennifer Marie Mendez  
—*Cum Laude*

Jeffrey Alexander Milner

Lansdon Page  
—*Cum Laude*

Binh Pham

Daniel Edward Retherford II

Evan Christopher Schimpf

\*Alex Guisinger Schuldberg  
—*Magna Cum Laude*

Eddie Keith Schuman  
—*Cum Laude*

Karan Sharma

Derrick Kenji Shimada

\*Joey Michael Smith

Jared Alexander Thompson

\*Lucas Neal Walter

Christopher James Walters

Nan Wu

Justin Michael Zarn

### BACHELOR OF SCIENCE IN CONSTRUCTION MANAGEMENT

\*Megan Elizabeth Cook-Eichelberger

Jacob Wesley Bramhall  
Nettles

### BACHELOR OF SCIENCE IN ELECTRICAL ENGINEERING

\*Osama E. Allaham

Nicole E. Armstrong

Shayne Michael Barrett

Eleuterio C. Benitez



Christopher James Gilden  
 Pedro Guajardo Jr.  
 Robert J. Hagel  
 Sanel Hirkić  
 —*Cum Laude*  
 Stephanie Lee Hunter  
 —*Cum Laude*  
 Bubacarr Jallow  
 \*David Jacob Kenny  
 Petr Roman Kirkach  
 Andrew Peter Klausung  
 Simon Thomas Miller  
 Cole Morton  
 Justin Wayne Parks  
 Matthew Alan Pixlee  
 Douglas E. Rapier  
 \*Muktar Mohamed Rashid  
 Zach David Roberson  
 Luis Joshua Rodriguez  
 Brian Michael Rossi  
 Christopher James Rusnak  
 Roland Louis Schafer III  
 Brian Thomas Schneider  
 —*Magna Cum Laude*  
 Henson Jay Smith III  
 Gregory William Turner  
 —*Cum Laude*  
 Kyle Christopher Willis  
 Mursal A. Yalah  
 Miao Zhang  
 \*Joshua Paul Zoellick

**BACHELOR OF SCIENCE IN  
 MATERIALS SCIENCE  
 ENGINEERING**

Yu-Chung Chang  
 Benjamin John Luce  
 \*Jonathon Micheal Lueck  
 \*Kevon Ebrahim Zadeh

**BACHELOR OF SCIENCE IN  
 MECHANICAL  
 ENGINEERING**

\*Kathryn Mary Apsens  
 Dane Friddell Baird  
 Breanna Louise Bence  
 —*Summa Cum Laude*  
 Zachary Benjamin Booth  
 —*Magna Cum Laude*  
 Steven Clarence Borey  
 Sean Aaron Brinkmann  
 —*Summa Cum Laude*  
 Casey Jamesen Carte  
 —*Magna Cum Laude*  
 \*Hoyin Cheung  
 \*Ryan Alan Clark  
 —*Magna Cum Laude*  
 \*Sean Ryan Dailey  
 Blake Raymond Digiovanni  
 \*Jefri Djunaidi  
 Sean Patrick Durick  
 \*Benjamin Richard Edwards  
 —*Cum Laude*  
 \*Casey Takuya Emery  
 \*Chris Ensign  
 Justin S. Erickson  
 —*Magna Cum Laude*  
 Keith Ray Ferguson  
 —*Cum Laude*

Ethan Victor Fitzpatrick  
 —*Magna Cum Laude*  
 Jordon Kim Gerry  
 Daniel Syum Goneth  
 Rodrigo Guerrero  
 Austin Alan Heinrich  
 \*Zachary James Hilliard  
 —*Summa Cum Laude*  
 Connor Robert Hollis  
 Jonathan Daniel Hrehov  
 David Shun-Ming Hsu  
 Dylan Wayne Hudspeth  
 Caleb Colburn Huxford  
 Tu Thanh Huynh  
 —*Cum Laude*  
 Robert Louis Johnson  
 Sergey A. Kruglikov  
 Hunjoon Andy Kwon  
 Seth Tyler Larsen  
 Kendrick John Leist  
 \*Yu-Kin Leung  
 Yan D. Lopatin  
 Alexander Warren Mattson  
 \*Danielle Paige McCauley  
 —*Magna Cum Laude*  
 Russell Chaves McDonald  
 Colleen Amanda McInnis  
 Alexander John McNeill  
 Austin James Melvin  
 Timothy Randall Mitchell  
 Clinton L. Mochizuki  
 Michael David Moloney  
 Hovey William Moore  
 \*Kyle Ray Morgan

Ian Christian Nelson  
 Martin Edward Nerbovig  
 Alex J. Olason  
 —*Magna Cum Laude*  
 Donald John Osborne-Moss  
 —*Magna Cum Laude*  
 \*Tyler Karl Pawelzick  
 \*Ruslan Pelikhatyy  
 Xavier Piña Jr.  
 Nathan Gregory Pindras  
 Kai Reckinger  
 \*Gregory Allen Rivers  
 Chris Pierre Routen  
 Teagan Ryan  
 Jessie Savid Salmonson  
 —*Summa Cum Laude*  
 Angelica Santos  
 Ronald Leeroy Schack III  
 \*Robert Martin Shannon  
 Elijah D. Shoemake  
 Marc James Simm  
 \*Christopher James Smith  
 Alex O. Staheli  
 Stetson Hexie Steiger  
 \*Derek Thomas Strong  
 —*Magna Cum Laude*  
 Jonathan Taylor Stucky  
 Gregory Edward Tashjian  
 Alan Ray Vandegrift  
 Nicholas York-Yushuo Wang  
 —*Cum Laude*  
 Olli Stanley Wanzek  
 —*Cum Laude*  
 Kyle Nathan Weber  
 Herman K. Yuen

**Division of Health Sciences**

**BACHELOR OF ARTS IN SPEECH AND HEARING SCIENCES**

Lucio C. Barajas Jr.

Laurel Lehl

Michelle Ann Rasmussen

---

**College of Nursing**


---

**BACHELOR OF SCIENCE IN NURSING**

*Emily Theresa Albertson — <i>Summa Cum Laude</i>	*Julia Kay Chipman — <i>Cum Laude</i>	Chelsea Lynn Jones — <i>Magna Cum Laude</i>	NgocChan TruongLeThi Nguyen — <i>Cum Laude</i>
Samuel Yordanos Alemu — <i>Cum Laude</i>	Olivia Anne Cline — <i>Magna Cum Laude</i>	*Brittany Patrice Juarez — <i>Magna Cum Laude</i>	*Sheena Nicole Olivera — <i>Cum Laude</i>
Rachel Nicole Alexander — <i>Magna Cum Laude</i>	Angelica Marie Cole — <i>Magna Cum Laude</i>	Sherry L. Karr	Jordan Ashleigh Osterhout — <i>Cum Laude</i>
Jill Suzanne Andrews	Kimberley Ann Cole Lowry — <i>Cum Laude</i>	Brittany Shanae Kelley — <i>Magna Cum Laude</i>	Jesse Dillon Otey-Stevenson — <i>Magna Cum Laude</i>
Sarah Jessica Carrascal Aniceto — <i>Magna Cum Laude</i>	Katherine Jeannette Cubberley — <i>Cum Laude</i>	*Andrea Virgie Ketner	Amber Rose Panter — <i>Magna Cum Laude</i>
*Ashley Lavonne Astorga — <i>Cum Laude</i>	Aurora Deleon — <i>Cum Laude</i>	Lauryn Ashley Knoll	Sarah Marie Parkins — <i>Magna Cum Laude</i>
Alexis Christina Axford — <i>Magna Cum Laude</i>	Chelsey Leanne Depeel	Lidia S. Kolomiytsev	Jamie Suzanne Parks
*Johanna Maria Ayers- Thompson — <i>Summa Cum Laude</i>	Ingrid A. Draney — <i>Cum Laude</i>	*Yevgeniy Kolomiytsev — <i>Summa Cum Laude</i>	Alyssa Michelle Pavel — <i>Cum Laude</i>
Neila Marie Bahadar — <i>Magna Cum Laude</i>	Jessica Lynn Duenich — <i>Magna Cum Laude</i>	Jill Marie Konek	*Erica Reyes Pho — <i>Summa Cum Laude</i>
Malathy Balasubramaniam	Elizabeth Jasmine Erickson	Melissa Kathryn Krieg — <i>Cum Laude</i>	Anna Marie Podenski
Michelle Patrice Barker — <i>Cum Laude</i>	*Leslie Anne Fisher — <i>Summa Cum Laude</i>	*Mikhail Kroshkin — <i>Cum Laude</i>	Monica Marie Powers
*Frances Benitez — <i>Summa Cum Laude</i>	*Danielle Elizabeth Fontenot — <i>Magna Cum Laude</i>	Jessa Rosete Labasan	*Bryon Lee Rain — <i>Summa Cum Laude</i>
*Heidi Michelle Bobst — <i>Summa Cum Laude</i>	Oksana Garbuz — <i>Summa Cum Laude</i>	Tyler Wade Lamb	Shannon Eloise Reis
Sorraya Iman Boudiaf — <i>Cum Laude</i>	Jonathan Patrick Garlit — <i>Cum Laude</i>	Paige Alayna Lane — <i>Cum Laude</i>	*Donna Marie Santiago Reyes — <i>Magna Cum Laude</i>
Karmina Elizabeth Bowen — <i>Cum Laude</i>	Daniel Haddish Ghebre — <i>Cum Laude</i>	Brianne Krystle Lawler — <i>Summa Cum Laude</i>	Kaila Lydia Rinta
Leah Kathryn Brandt — <i>Summa Cum Laude</i>	Cassandra Giudice	Nicole Christine Ledesma — <i>Magna Cum Laude</i>	*Stephanie Ellen Roise- Yamashita — <i>Summa Cum Laude</i>
*Monica Christina Bravo — <i>Summa Cum Laude</i>	Angela Carlyle Goetz	Victoria Renae Lee	Joyce Marie Ross
Lauren Marie Bray — <i>Summa Cum Laude</i>	Kaitlyn Grady	Morgane Marielle Leguennec — <i>Magna Cum Laude</i>	Claire Gentry Rovang
Rebecca Jewell Brostoff	Rosa Maria Granados — <i>Cum Laude</i>	Amanda Katherine Lien	Evan Josiah Rutherford — <i>Magna Cum Laude</i>
*Heather Miranda Brown — <i>Summa Cum Laude</i>	*Raven Rose Grandy — <i>Magna Cum Laude</i>	Michele Lyn Love-Wells	Thomas P. Ryan
Nicole Lorraine Brustkern — <i>Magna Cum Laude</i>	Christine Elizabeth Grissom — <i>Cum Laude</i>	Lorna Elizabeth Mantey	Griselda Sanchez
Ashley Marie Burns — <i>Magna Cum Laude</i>	Teasha Marie Groth	*Adriane Nicole Martin — <i>Summa Cum Laude</i>	Robin M. Sandall
Elena Frances Cadena — <i>Magna Cum Laude</i>	*Viktoriya Gruntkovskaya — <i>Summa Cum Laude</i>	Amy Marie McCrery	Gregory Gene Saunders
Michelle Anne Carrougher	Marisol Gutierrez — <i>Cum Laude</i>	*Rachael Marie McGanney — <i>Cum Laude</i>	Angelina Schauer
John S. Caughlan	Lindsey M. Hickcox	Pooja Sunil Mehta	*Domenica Bonarrigo Searight — <i>Summa Cum Laude</i>
Sara Jerene Champoux — <i>Magna Cum Laude</i>	*Paula M. Holtman — <i>Summa Cum Laude</i>	Mandy Sue Mikelson	Yelena Shevchenko
Chiao-Ting Chien — <i>Magna Cum Laude</i>	Frances Martha Hull — <i>Magna Cum Laude</i>	Amy Noel Miller	*Kimberly Alice Shipley — <i>Magna Cum Laude</i>
	Hanna Marie Hyland — <i>Cum Laude</i>	Alicia S. Molina	Kadra Mohamed Shire
	*Kristen Paige Jameson — <i>Magna Cum Laude</i>	Amber Marie Moss — <i>Magna Cum Laude</i>	Robin Nicole Shrout
		Nicole Amber Mowbray — <i>Cum Laude</i>	Hailey Rochelle Silvers — <i>Cum Laude</i>
		*Stellita J. Moxley — <i>Summa Cum Laude</i>	Natalya S. Sinkova — <i>Cum Laude</i>
		Briana Rissa Mushinsky	Oksana I. Slivkova
		Dawn Michele Newschwander — <i>Cum Laude</i>	

Haley Elizabeth Snodgrass  
—*Cum Laude*

Bonnie Jo Somolik

Breanne Jackee Stachofsky

Carin Elisha Stagge

Kasia LaChelle Stewart  
—*Magna Cum Laude*

Sharon Ruth Stricker

Megen Marie Sund  
—*Cum Laude*

Lucy Patricia Sweet

Basaznew Badeg Tadesse

Diana A. Tarasevich  
—*Summa Cum Laude*

\*Elizabeth S. Teeling  
—*Summa Cum Laude*

Alenka Terzic

Holly Thorpe  
—*Magna Cum Laude*

Lam Hoang Truong

Skylar W. Tucker  
—*Cum Laude*

Ann Marie Tyynismaa  
—*Summa Cum Laude*

\*Trisha Ilene T. Uy  
—*Summa Cum Laude*

Olesya V. Vlasenko  
—*Magna Cum Laude*

\*Joline Elizabeth Walker  
—*Summa Cum Laude*

Noeljo D. Wise

Alexander J. Zachary  
—*Cum Laude*

Karen Louise Zaro

Tera Lynn Zeldenrust

Gladys Billie Zundel

**BACHELOR OF SCIENCE IN  
NURSING WITH EASTERN  
WASHINGTON UNIVERSITY**

Lauryn Altmeyer  
—*Magna Cum Laude*

Alyssa Andring  
—*Summa Cum Laude*

Lee Ayers

Tanya Marie Baker  
—*Magna Cum Laude*

Brian Keith Barton  
—*Magna Cum Laude*

Kailah Denee Broussard  
—*Cum Laude*

Emily Anne Cain

Krista Charette  
—*Magna Cum Laude*

Nicholas Dean Faso  
—*Magna Cum Laude*

Inna Anatolyevna Fedchun

Shelby Louise Hansen  
—*Magna Cum Laude*

Caitlin Nicole Harris  
—*Magna Cum Laude*

Katherine Jean Hurley  
—*Summa Cum Laude*

Ariana Renee Huthmacher

Destiny Jade Johnson  
—*Cum Laude*

Kelsey Ann Key  
—*Cum Laude*

Stephanie Lynn Lamebull

Shanna Lynne Mackie

Jennifer Amelia Maxson  
—*Magna Cum Laude*

Ashley Ann Stroud  
—*Magna Cum Laude*

Adriana Teagle  
—*Cum Laude*

Kiranjit Kaur Thandi

Kassidy VanBerkum  
—*Cum Laude*

Jennifer Lynn Ventress  
—*Magna Cum Laude*

Lindsey Katherine Will

Mary Yim

**BACHELOR OF SCIENCE IN  
NURSING WITH  
WHITWORTH UNIVERSITY**

Bailey Alyssa Dill  
—*Summa Cum Laude*

Amie Lynn Foster  
—*Magna Cum Laude*

Brittany Nichole Fowler  
—*Magna Cum Laude*

Kelsey Lee Harrison  
—*Cum Laude*

Emily Erin Hisel  
—*Cum Laude*

Melodie Anne Ratliff  
—*Magna Cum Laude*

Alyssa Ashley Richards

**College of Pharmacy**

**BACHELOR OF SCIENCE IN  
NUTRITION AND EXERCISE  
PHYSIOLOGY**

\*Lindsey Lea Alade

\*Nova Diane Baker

\*Rebekah Katherine Bennett

\*Stefanie Quinn Bennett  
—*Cum Laude*

\*Jennifer L. Bilbrey

Gea Calamiong

\*Caitlyn Skye Cordrey  
—*Cum Laude*

\*Janae Nicole DeJanovich

Sara Ann Evans

\*Alexandra Nicole Grohnke

\*Pui Lam Adriana Ho  
—*Cum Laude*

\*Nicole Dawn Inglesby

\*Aleksy Ivanovich Korenkov

\*Kyle Andrew Morris

\*Lindsay Mayumi Ann  
Nakamura

\*Michelle Nelson  
—*Cum Laude*

\*Lauren Margaret Puhek

Christina Anne Scott

Mackenzie Lynn Stults

\*Margaret Eleacia Walser

**College of Veterinary Medicine**

**BACHELOR OF SCIENCE IN  
BIOCHEMISTRY**

Ann L. Freeman

Oscar Alexander Hernandez

Chelsea Louise Martin

Katherine McClelland

\*Yelena E. Novik  
—*Cum Laude*

Winston Spencer Slocumb

**BACHELOR OF SCIENCE IN  
GENETICS AND CELL  
BIOLOGY**

Paige Taylor Blue

Thanh Huu Nguyen

Nivedita Rajakumar  
—*Summa Cum Laude*

Nicole Ann Reinsch  
—*Summa Cum Laude*

Ronni Rebecca Weekes

**BACHELOR OF SCIENCE IN  
MICROBIOLOGY**

Alexandra Bartkoski

Tyler Jerome Edwards

Jesica Lie

Maureen U. Murphy

\*AlQassem Naim

\*Jennifer Aide Rodriguez

\*Amandeep Singh

**BACHELOR OF SCIENCE IN  
NEUROSCIENCE**

Lindsey Ann Ballsmider

Christopher John Corboy

\*Kelly Hewitt

---

## Candidates for Residency Teaching Certificates

---

Jadie M. Barton	Breanna Y. Haynes	Rebecca R. Martin	Arianne K. Pulsipher
Stevi L. Blythe	Meredith A. Heinzmann	Amanda M. Mattingly	Alexandria V. Quann
Samittra S. Boggs	Sarah A. Herranen	Avery C. Maxwell	Maria D. Quilizapa
Shayla R. Boyle	Victoria E. Hill	Michael G. McClenathen	Kyle T. Rasor
April A. Breedlove	Deanne R. Hollenbeck	Amy L. McKeown	Aaron W. Reed
Ryosuke Buffalochief	Alyssa K. Hubbard	Megan L. McNamara	Chester A. Richmond
Yuri T. Can	Tyley J. Hunter	Hannah C. Melberg	Thomas A. Sappington
Bailey J. Carlson	Grace A. Hylton	Julia E. Melvin	Kirsten D. Sierra
Andrew J. Chamberlin	Ashlie A. Jensen	Vanessa Mendoza-Alcocer	Randal L. Simensen
James C. Climer	Nicholas L. Johnson	Andrew E. Miller	Megan R. Smith
Deanna L. Colburn	Lindsey S. Kelly-Huff	Shantia L. Miller	Hannah M. Smith-Morgan
Anna S. Combest-Friedman	Shelby M. Kesterke	Paul W. Mills	John E. Sullivan Jr.
Jennifer R. Crane	Jessica J. Kinmark	Reanne L. Nakapaahu	Paige A. Thomson
Maris M. Digiovanni	Molly J. Kuntz	Meghan C. Newton	Elizabeth M. Tolley
Danielle E. Durham	Kristy N. Lange	Alma Y. Nicacio	Katherine A. Vetter
Shelby A. Everitt	Sonja E. Larson	Sarah E. Nolet	Kendra A. Waters
Kacie L. Fincher	Jesse V. LaSarte	Carly E. Noyes	Taylor M. Werner
Katherine E. Frakes	Jordan T. Lee	Brandee K. Osborn	Mary T. Westlake
Abigail J. Grisham	Elizabeth M. Leonard	Raef R. Pedersen	Samantha J. Wilkes
Peter J. Hall	Kaylynn S. Long	Kendra K. Peterson	Hannah L. Wise
Nicholas Harteau	Brent A. Mansell	Anayssa Pulido	



## Commissions



### TO RECEIVE COMMISSIONS AS SECOND LIEUTENANTS IN THE UNITED STATES ARMY

Austin Benson  
Thomas Burdick  
Aaron Hubbard  
Shelley May

### TO RECEIVE COMMISSIONS AS ENSIGNS IN THE UNITED STATES NAVY

Taylor Walter Barrett  
Gregory William Turner

## Honors College

Amanda Amore  
Andrew Arndt  
Breanna Bence  
Peter Boettcher  
Aratchaporn Boriratrith  
Nicholas Colby

Meredith Heinzmann  
Alyssa Hubbard  
Ashley Jones  
Brittany Kealy  
Kelsi Lakey  
Seth Larsen

Sonja Larson  
Samantha Lewis  
Olivia Lottes  
Benjamin Nantasai  
Nathan Pindras  
Aaron Rapozo

Brian Schneider  
Elijah Shoemake  
Matthew Small  
Peter Wiggum  
Jenae Wilczynski

### GRADUATION WITH ACADEMIC HONORS

Students in the class of 2014 who have demonstrated exceptional academic performance are wearing the WSU custom honor cord of crimson and silver. These students may graduate with one or more of the following distinctions:

**SUMMA CUM LAUDE:** Candidates for baccalaureate degrees who have completed at least 30 hours of graded work at Washington State University with a cumulative grade point average of 3.90 or better.

**MAGNA CUM LAUDE:** Candidates for baccalaureate degrees who have completed at least 30 hours of graded work at Washington State University with a cumulative grade point average between 3.70 and 3.89.

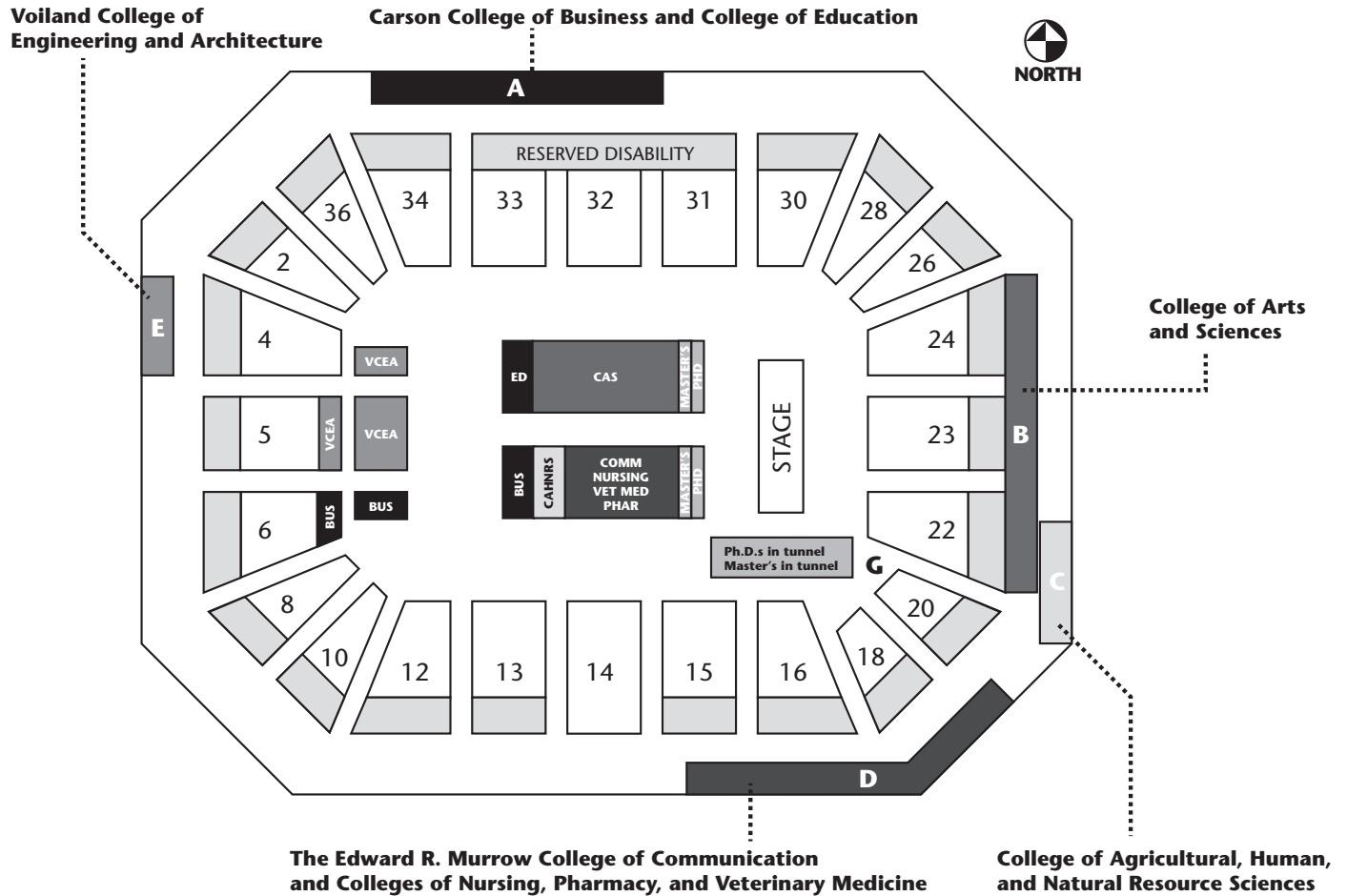
**CUM LAUDE:** Candidates for baccalaureate degrees who have completed at least 30 hours of graded work at Washington State University with a cumulative grade point average between 3.50 and 3.69.

**HONORS COLLEGE:** Graduates who have participated in the Honors College and satisfied the college's requirements receive certificates of completion and wear the Honors College Medallion.

**HONOR SOCIETIES:** Washington State University students may be selected to join, within their disciplines, one or more of 29 honor societies and any of six honor societies across academic disciplines, including one freshman honor society.

These include Alpha Epsilon Rho, Alpha Phi Sigma, Alpha Zeta, Beta Alpha Psi, Beta Gamma Sigma, Beta Tau, Gamma Sigma Delta, International Golden Key, Kappa Delta Pi, Kappa Omicron Nu, Mortar Board, Mu Phi, Omicron Chi Gamma, Omicron Delta Epsilon, Omicron Delta Kappa, Phi Alpha Theta, Phi Beta Kappa, Phi Delta Kappa, Phi Kappa Phi, Phi Lambda Upsilon, Phi Sigma Alpha, Phi Sigma Iota, Phi Zeta, Pi Sigma Alpha, Psi Chi, Rho Chi, Rho Nu, Sigma Tau Delta, Sigma Theta Tau International, and Tau Beta Pi.

# STUDENT LINE-UP AND SEATING AREAS



## OPEN SEATING

Sections 2-15 & 31-36  
 Disability Seating—top three rows—all sections  
 VIP Reserved Section 14

## STUDENT SEATING AREAS

- BUS Carson College of Business
- CAHNRS College of Agricultural, Human, and Natural Resource Sciences
- CAS College of Arts and Sciences
- VCEA Voiland College of Engineering and Architecture
- COMM The Edward R. Murrow College of Communication
- ED College of Education
- NURSING College of Nursing
- PHAR College of Pharmacy
- VET MED College of Veterinary Medicine

# WSU



## WASHINGTON, MY WASHINGTON

*Washington, My Washington  
The Crimson and the Gray,  
'Tis the songs of memory  
That we sing today,  
When the sad hours come to you  
And sorrows 'round you play,*

*Just sing the songs of  
Washington  
The Crimson and the Gray,  
Just sing the songs of  
Washington  
The Crimson and the Gray.*